

# SELECT AUCTION

CAPE TOWN | 29 AUGUST 2017

## SESSION ONE – 10AM

DECORATIVE ARTS : Lots 1 - 100

FURNITURE : Lots 101 - 229

LIGHTING AND MIRRORS : Lots 230 - 255

CARPETS : Lots 256 - 300

## SESSION TWO – 2PM

PAINTINGS : Lots 301 - 450

SILVER AND METALWARE : Lots 451 - 480

JEWELLERY : Lots 481 - 550

WATCHES : Lots 551 - 553



021 671 4497 | [info@omni.co.za](mailto:info@omni.co.za)

9 Hemlock Street, Newlands

[www.omni.co.za](http://www.omni.co.za)

## SPECIALISTS AND SERVICES

### WARREN SCHEUER

Managing Director  
B.F.A (HON), P.D.J.M – RHODES  
UNIVERSITY  
warren@omni.co.za

### SHONA ROBIE

Director | Office Manager |  
Decorative Arts  
B.A. (FA) – UNIVERSITY OF  
CAPE TOWN  
shona@omni.co.za

### GARY SHEAN

Director | Fine Art  
BBM - FBT COLLEGE  
gary@omni.co.za

### KAREN SHEAN

Head of Department | Silver  
B.F.A - CAPE TOWN COLLEGE OF  
FASHION DESIGN  
karen@omni.co.za

### NATHEMA VALLY

Graphic Design | Media  
NHD: Graphic Design - CAPE  
TECHNIKON  
nathema@omni.co.za

### ACCOUNTS

accounts@omni.co.za

### BIDS OFFICE

bids@omni.co.za

### ENQUIRIES

info@omni.co.za

## VIEWING

Friday 25th August: 10am – 7pm  
Saturday 26th August: 10am – 4pm  
Sunday 27th August: 10am – 2pm  
Monday 28th August: 10am – 4pm

Buyer's Premium is calculated at 12% plus VAT at the prevailing rate for items selling over R10 000 and 15% plus VAT for items selling for R10 000 or less at the prevailing rate.

Please note that all lots are sold as is.

All collections are to take place the day following the auction.

## SESSION ONE

### DECORATIVE ARTS, GLASS AND COLLECTABLES

1

Three Staffordshire Copper Lustre Jugs, Circa 1870

each with blue highlights, including: the 'Dancers'

jug

the tallest 21cm high (3)

R1 200 - R1 400

2

A Pair of Minton Blue and White Soup Plates, 19th Century each with floral sprays, impressed factory mark; and An Earthenware 'Chinoiserie' Pattern Plate

25,5cm diameter (3)

R300 - R500

3

A Copland Earthenware 'Indian' Pattern Part Dessert Service, 19th Century

comprising: 10 plates and a comport, impressed factory mark (11)

R900 - R1 200

4

A Pair of Chinoiserie Saucer Dishes, Late 19th Century each printed and painted with a bird perched on a branch amongst foliage; and A M&Co Ironstone Chinoiserie Plate, Late 19th Century, printed factory mark

23cm diameter (3)

R500 - R700

5

A Green-glazed Jardinière and Stand, Late 19th Century of typical form, moulded with acanthus-leaf bands

110cm high

R2 000 - R3 000

6

An Art Nouveau Royal Doulton 'Poppies' Pattern Bowl, Circa 1910 staining, printed factory mark, d3226; A Royal Doulton 'Battle of Hastings Bayeux Tapestry' Pattern Pitcher, hairline crack, staining, printed factory mark; A Set of Six Alfred Meakin 'Birds of America' Series Plates, printed factory mark; and Two KPM Fruit Plates, printed factory mark

22cm diameter (10)

R500 - R700

7

A Carlton Ware Bleu Royale 'Vine' Pattern Two-handled Vase, 1950s shape 1693/K, gilt and enameled highlights, printed factory mark, original paper label, staining to base

25cm high

ILLUSTRATED

R5 000 - R7 000

8

A Carlton Ware 'New Stork' Pattern Two-handled Oval Dish, 1950s shape 1633, speckled blue ground, printed factory mark, original paper label; and A Carlton Ware Rouge Royale Trumpet Vase, printed factory mark, original paper label

13,5cm high (2)

R700 - R900

9

A Pair of Clari ce Cl i ff 'Cel tic Harvest' Pattern Jugs, 1930s each printed factory mark, chips, repairs, hairline crack  
28cm high (2)  
R700 - R900

10

A Royal Dou l ton Character Jug 'Touchstone', 1936-1960 D5613, designed by Charles Noke, printed factory mark, hairline crack  
15,5cm high  
R600 - R800

11

Two Royal Worcester Pin Dishes, 1951 and 1952 painted by B. Cox, each circular, painted with fruit, printed factory and date mark; and Three Li moges Pin Trays, 20th Century, each shaped rectangular, printed with a courting couple, printed factory mark  
the largest 13,5cm wide (5)  
R700 - R900

12

A Pair of Vi on & Baury 'Bl anc De Chi ne' Fi guri nes, 20th Century each in the form of a girl carrying a basket and her companion reading a book, lacking branches, factory mark, restoration  
the taller 16,5cm high (2)  
R500 - R700

13

A Set of Ei ght Royal Worcester Pal i ssy 'Game Series' Plates comprising: 2 dinner plates, a fish plate and 5 side plates, printed factory mark; A Pair of Myott 'Wi l dl i fe' Di nner Plates, printed factory mark; and Two Further Plates, depicting birds the largest 25,5cm diameter (12)  
R1 500 - R2 000

14

A Charl otte Rhead Burl ei gh Ware 'Grape' Pattern Sandwi ch Set comprising: 6 plates and a tray, printed factory mark; A Ronuk Stoneware Bl ue-gl azed Vase, impressed factory mark; and A Moulded and Frosted Amber-gl ass Trumpet-shaped Vase the vase 25,5cm high (9)  
R600 - R900

15

A Wedgwood Kei th Murray Vase shape 3805, tapering ovoid with incised horizontal bands, overall matt-straw glaze, signed, factory mark, restoration  
28,5cm high  
R2 000 - R3 000

16

A Clari ce Cl i ff 'Jonqui l Deleci a' Pattern Dragon Jug, 1930s the tapering ovoid body moulded with flowerheads and foliage, the handle terminating in a dragon-mask, painted with flowerheads in shades of green, yellow and orange, printed factory mark  
26cm high  
ILLUSTRATED  
R4 000 - R6 000

17

A Clarice Cliff 'Tral Lee' Pattern Basket-shaped Vase, 1930s moulded overall with basket weave, painted in shades of blue, yellow, green, orange, brown and black, printed factory mark

36cm high

ILLUSTRATED

R4 000 - R6 000

18

A Poole Pottery 'Delphis' Vase By Lynn Gregory, 1970s painted in shades of orange, green and brown, impressed factory mark

31cm high

R900 - R1 200

19

A Ridgway 'Golden Amber' Pattern Ironstone Part Coffee Service, 1970s comprising: 5 cups and 5 saucers, a sugar bowl and a coffee pot, printed factory mark; A Royal Tunstall 'Norse' Pattern Part Dinner Service, comprising: 6 plates and 5 soup bowls, printed factory mark; and A Set of Nine Single-handled Soup Bowls, with mottled ochre and russet glaze (32)

R700 - R900

20

A Royal Doulton Lambeth Stoneware 'Sandsprite' Pattern Part Dinner and Tea Service, 1976-1992 comprising: 20 dinner plates, 18 fish plates, 33 side plates, 19 dessert bowls, a gravy jug and saucer, 3 salt and pepper shakers, 4 oval platters, an oval bowl, 2 jugs, 2 canisters and covers, 18 cups and saucers and a teapot, printed factory mark, chips (144)  
R4 000 - R6 000

21

A Belleek 'Shamrock' Pattern Vase, 1980-1992 moulded globular body with elongated trumpet neck, printed factory mark

16cm high

R200 - R300

22

An Alfred Meakin Gilt and Cream Part Dinner and Tea Service comprising: 7 dinner plates, 6 fish plates, 12 side plates, 6 soup bowls, 6 dessert bowls, a circular bowl, 2 tureens and a cover, a gravy boat and stand, a teapot, a sugar bowl and 2 oval platters, chips, printed factory mark (47)  
R1 000 - R1 500

23

Two Persian Polychrome Tiles one rectangular, depicting a horseman, the other square, depicting birds amongst foliage the largest 23cm high (2)

R300 - R500

24

A Pair of French Faience Vases, Late 19th Century  
each of cornucopia form, with eagle-mask terminals, supported by a gryphon, the other a lion, chips, crack  
42cm high (2)  
R2 000 - R3 000

25

A Dresden Smoking Table Set, Late 19th Century  
comprising: an oval dish with fixed pedestal cigarette holder stand, and four small square ashtrays, each painted with flowers, printed factory mark  
the stand 21,5cm wide (5)  
R1 000 - R1 500

26

A Porcelain Figurative Group, Late 19th Century  
with two maidens alongside a gentleman reading, pseudo red anchor mark  
21,5cm wide  
R600 - R800

27

A Large Capodi monte Soup Tureen, Cover and Ladle  
oval, moulded with acanthus-leaf scroll panels, the sides applied with rose handles in high relief, raised on four feet, the domed cover similarly decorated, chips, repairs  
55cm wide over handles  
R500 - R700

28

Two Berlin Oval Platters, Late 19th Century  
each with floral sprays, printed mark 'JULIUS LANCE BERLIN', the larger 41,5cm wide (2)  
R300 - R400

29

A Dresden Two-handled Pot Pourri Urn and Cover, Late 19th Century  
of typical form, painted with intertwined ribbon and floral swags above moulded laurel wreath swags, raised on a square base with four acanthus-leaf feet, pierced cover, printed factory mark, restoration; and A Frank Haviland Limoges Two-handled Tray, of quadrilobe outline, printed with bands of roses, printed factory mark  
the urn 32cm high (2)  
R600 - R900

30

A French Metal-mounted Box and Cover, 20th Century  
the cover printed with a Cardinal bird perched on a pine branch, printed factory mark; Two Crown Staffordshire Boxes and Covers, each cover applied with flowers, printed factory mark; A Crown Staffordshire Basket, with floral rim, printed factory mark; A Delft Blue and White Vase; and A Small Opaque White Glass Figure of a Poole, chips  
the vase 13cm high (6)  
R300 - R500

31

A Pair of Royal Dux Black and White Figures of Ostriches, 20th Century each in the resting position, printed factory mark, enamel loss 28cm high (2)  
R400 - R600

32

A Rosenthal White-glazed Part Tea and Coffee Service from the Classic Rose Collection comprising: 13 cups and 8 saucers, a milk jug, a sugar bowl and cover, a teapot, a coffee pot and 18 cake plates, printed factory mark (43)  
R800 - R1 000

33

A Pair of Green-glazed Planter, Modern  
42cm high (2)  
R600 - R800

34

A Pair of Lime Green-glazed Planters, Modern  
29cm high (2)  
R400 - R600

35

A Chinese Famille Rose Bowl, 19th Century painted with panels enclosing figures at various pursuits, chip, hairline crack  
20cm high  
R700 - R900

36

A Small Chinese 'Wucui' Vase, Early 20th Century of square section, painted in underglaze blue with panels of prunus and peonies against an iron-red and green ground, repair  
15cm high  
R1 000 - R1 500

37

A Chinese Famille Rose Blue-ground Vase, Early 20th Century cylindrical with central collar decorated with figures within a landscape between bands enclosing birds amongst chrysanthemums and butterflies amongst peonies, script mark  
35cm high  
R1 200 - R1 500

38

A Chinese Ci Zhou Style 'Dog-of-Fo' Rooftile wearing ornate collar and headdress, wide open mouth and curled tail, cream and brown glaze, rectangular base with canted corners  
30cm high  
R900 - R1 200

39

A Pair of Chinese Export European Subject Chargers, 20th Century circular, each painted with a fox hunting scene enclosed within a border of scrolling foliage  
46cm diameter (2)  
R6 000 - R8 000

40

A Chinese 'Wucai' Jar and Cover, Modern tapering ovoid, painted overall in iron-red, blue and green with chrysanthemums and prunus blossoms above two fan-shaped panels, gilt highlights, printed mark

37cm high

R700 - R900

41

A Pair of Japanese Kutani Jars, Early Meiji each of tapering ovoid form, shaped panels depicting samurai amongst scrolling foliage and further panels, script mark, covers lacking

14,5cm high (2)

R800 - R1 000

42

A Japanese Kutani Teapot and Cover, Meiji wasted cylindrical, painted with panels depicting birds amongst prunus and chrysanthemums blossom and landscapes, script mark

19,5cm high

R1 000 - R1 200

43

A Japanese Kutani Gourd-shaped Bottle and Stopper, Late Meiji painted with figures beside blossoming chrysanthemums, the neck and stopper with geometric pattern, script mark

29cm high

ILLUSTRATED

R3 000 - R4 000

44

A Japanese Kutani Perfume Bottle and Stopper, Meiji lobed body with panels enclosing birds, the cover with script

10,5cm high

R400 - R600

45

A Set of Three Japanese Imari Bowls, Meiji

in sizes, each painted with shaped panels enclosing peonies and a quilt against a trellis ground the largest 24,5cm diameter (3)

R1 500 - R2 000

46

A Noritake 'Madera' Pattern Part Dinner, Tea and Coffee Service, Modern

comprising: 12 dinner plates, 12 fish plates, 12 side plates, 11 dessert plates, 12 soup plates, 2 platters, a gravy boat, 2 tureens and a cover, 11 tea cups and 11 saucers, 12 coffee cups and 12 saucers, a teapot, a coffee pot and 2 milk jugs, printed factory mark (125)

R3 000 - R4 000

47

A Korean Blue and White GINGER Jar, Late 19th Century painted with a continuous riverscape, cover lacking

15cm high

R700 - R1 000



48

A South African Brown-glazed Stoneware Vase, 20th Century tapering ovoid, the shoulders incised and glazed with a foliate and fishscale band, incised 'bird' mark

19cm high

R500 - R600

49

Andrew Wal ford (1942-): A Large Stoneware Bowl with overall iron and tenmoku-glaze depicting floral panels, painted initials, repair; and Andrew Wal ford Blue and White Porcelain Bowl, with a floral band, painted initials

the largest 45,5cm diameter

R1 000 - R1 500

50

Evette Weyers (1946-): A Pottery 'Rhino' Sculpture the heart-shaped stem in the form of twin rhinos balancing on a small pedestal, surmounted by two figural busts protecting a nest of eggs, raised on a rectangular base, incised signature

40cm high

ILLUSTRATED

R3 000 - R4 000

51

Lydia Holmes (1955 -):

A Porcelain Figure in the form of a standing balding man wearing a black tunic, a necklace with jeweled pendant and green shoes, raised on a wooden base

57cm high excluding base

R2 000 - R3 000

52

A Li nnware Bowl , 1940s tapering ovoid, overall mottled blue and turquoise glaze

16cm diameter

R500 - R700

53

Bruce Wal ford (1951-): A Tenmoku-glazed Stoneware Teapot the globular body with a band of facet, twisted loop handle, impressed artist's stamp

24cm high

R400 - R600

54

Tania Babb (1967-): A Glazed Earthenware Figure With Cat the reclining scantily clad female of abstract proportions, poised with a cat on her thigh

39,5cm wide

R800 - R1 000

55

A Group of Three Rorke's Drift Pottery Wares comprising: a two-handled bottle vase by Ivy Molène, a jug vase by Dinah Moléfe and an incised vase by Gordon Mbatha, painted factory mark

the tallest 31cm high (3)

R6 000 - R8 000

56

Three Bohemian Cut-glass Wares,  
Late 19th Century  
comprising: a yellow-stained  
goblet with a panel depicting  
deer within a wooded landscape,  
a yellow-stained footed vase,  
faceted bands with flowerheads  
and fruiting vines, and a red-  
stained footed beaker with titled  
buildings, chips  
the tallest 19cm high (3)  
R400 - R600

57

A Venetian Red and Gilt-flecked  
Clear Glass Goblet  
the stem in the form of a dolphin;  
A Pair of Venetian Filigree Glass  
Footed Tumblers; A Purple-stained  
Clear-glass Bottle and Stopper,  
etched with fruiting vines; A Lobed  
Clear-glass Vase; and A Silvered  
Green-glass Vase  
the tallest 15,5cm high (6)  
R400 - R600

58

Three Clear Cut-glass Wares  
comprising: an ovoid vase on three  
scroll feet with floral decoration,  
a basket-shaped bowl with star  
decoration and a large waisted  
cylindrical vase with diamond  
decoration, chips  
the tallest 39,5cm high (3)  
R900 - R1 200

59

A Clear Cut-glass Table Lamp and  
Shade  
decorated with flowerheads and  
foliage  
44cm high  
R1 000 - R1 500

60

A Clear Cut-glass Ships Decanter  
and Stopper  
26,5cm high  
R200 - R300

61

A Group of Five Clear Cut-glass  
Decanters and Stoppers  
of various shapes and sizes, chips,  
one stopper damaged  
the tallest 28cm high (5)  
R1 500 - R2 500

62

A Large Clear Cut-glass Circular  
Dish and A Collection of Fifteen  
Caltex 'Builders of a Nation'  
Cold Painted Lead Display  
Figurines, impressed factory mark  
the dish 33cm diameter (16)  
R150 - R200

63

A Lalique Style 'Chantilly' Pattern  
Clear and Frosted Glass Bowl  
the octagonal rim moulded with a  
fern design, chips  
29,5cm diameter  
R600 - R800

64

A Group of Four Paperweights  
comprising: 2 Perthshire  
concentric-millefiori  
paperweights, a green glass dump  
and a bubble-inclusion clear glass  
paperweight  
the dump 11,5cm high (4)  
R2 000 - R3 000

65

A Barolac 'Mermaid' Pattern Frosted Centerpiece Bowl, 1930s designed by Josef Inwald, moulded with four mermaids, the rim with water lilies, raised on four feet 31cm diameter  
R1 000 - R1 200

66

A Moser Art Glass Vase, 20th Century faceted clear crystal with a continuous gilt band of classical figures, engraved factory mark, original paper label  
20cm high  
R4 000 - R6 000

67

A Boxed Set of Iittala 'Niiva' Pattern Drinking Glasses, 1970s designed by Tapio Wirkkala, comprising: 12 whiskey glasses and 10 sherry glasses (22)  
R200 - R300

68

A Czechoslovakian Sommerso Art Glass Vase, 20th Century the tapering ovoid body with extended bulbous neck in white glass, with purple, red and yellow rondels towards the base  
39cm high  
R600 - R800

69

A Czechoslovakian Sommerso Art Glass Vase, 20th Century the tapering ovoid body in white glass with red, orange and yellow splatters  
23,5cm high  
R600 - R800

70

A Pair of Waterford Crystal 'Lismore' Candles each with acid etched factory mark  
15,5cm high (2)  
R700 - R900

71

A Pair of Waterford Crystal 'Chatham' Candles each with original paper label, acid etched factory mark  
13cm high (2)  
R700 - R900

72

David Reade (1960- ): Two Glass Perfume Bottles and Stoppers one of globular clear glass with internal blue and yellow swirl inclusions, the other of pear-shape in purple with clear glass, signed  
9cm high (2)  
R500 - R700

73

An Engraved and Silver-plated Horn Canister and Cover, Late 19th Century of typical cylindrical form, the body and cover with bands and circular motifs  
10,5cm high  
R800 - R1 000

74

A Metal-mounted Tobacco Snuff Box and Cover, Late 19th Century of oval section, the cover with loop handle  
5,5cm wide  
R300 - R500

75

A Scrimshaw Whale's Tooth 'Abaiang Island'

NOT SUITABLE FOR EXPORT

depicting a whaling scene and inscribed 'SPERM WHALING ON THE LINE', the reverse with figures beside a Missionary church amongst coconut palms, inscribed 'O HEAR US WHEN WE CRY TO THEE FOR THOSE IN PERIL ON THE SEA' and a ship in full sail above a banner inscribed 'ABAIANG IS. 1860', chips

16,5cm long

R7 000 - R9 000

76

A Chinese Patinated Bronze Censer and Cover, Late 19th Century the hexagonal tapering ovoid body with bird and foliate panels, dragon scroll handles, raised on four tall leaf and scroll feet, hexagonal base, the cover with Dog-of-Fo finial, repair

37cm high

R2 500 - R3 000

77

A Chinese Brass-mounted Carved Bone Handled Sword and Scabbard, Late 19th Century depicting figures at various pursuits, cracks, repairs

74,5cm long

R1 500 - R2 000

78

A Chinese Pewter and Inlaid Sweet Meat Server and Cover

of quadrilobe outline, applied with two carrying handles and four removable dishes, the domed cover with hardstone inlaid twin goldfish finial, opening to reveal five removable compartments and covers with hardstone inlaid fruit finials, engraved overall with peonies, birds and script medals, together with two fish-shaped dishes, wear

37,5cm wide

R3 000 - R4 000

79

A Pair of Chinese Snuff Bottles and Stoppers, Modern

each printed in iron-red on either side with a panel enclosing a dragon, printed HONG KONG; and Another, printed and painted in blue with butterflies

7cm high (3)

R500 - R700

80

A Set of Six Carved Soapstone Goblets

each of pale celadon tone with brown inclusions (6)

R300 - R500

81

A Chinese Resin Two-handled Vase, 20th Century

tapering ovoid, cast in low relief with figures within a balustraded garden before a riverscape, elephant-mask handles, fixed wooden stand, damage, repair

30cm high

R300 - R400

82

A Japanese Gi nbari Ando Shi ppo  
Cl oi sonn  Akasuke Red Vase, 20th  
Century  
taperi ng ovo i d, depi cti ng a spray  
of roses, wi th wooden stand  
18cm hi gh  
R800 - R1 200

83

A Japanese Bronze Hand Mi rror,  
19th Century  
ci rcu lar body cast to one si de  
wi th storks wi thi n a ri verscape,  
pol i shed reverse, cane-wrapped  
handl e, si gned  
28cm hi gh  
R1 000 - R1 500

84

A Group of Fi ve Pewter Wares  
compri si ng: a Enturn two-  
handl ed sugar bowl and mi lk jug, a  
Sheffield hot water pot, a globular  
vase, si gned, and a bowl , stamped  
mark  
the bowl 29cm di ameter (5)  
R800 - R1 000

85

A Brass Whale Oi l Lamp, Ci rca 1800  
of typi cal form, repai rs  
31cm hi gh  
R200 - R300

86

An Engraved Pati nated Bronze  
Sundi al  
octagonal , i nscri bed 'TYME FLYES'  
and the date 'AD1694'  
20cm wi de  
R2 000 - R3 000

87

A German Vi ol i n, Ci rca 1900  
Label l ed 'Atel i er fur  
Kunstl eri schen Gei genbau. Al ban  
Voi gt & Co. Sachsen & London anno  
1903', wi th bow and case  
l ength of back 37,5cm l ong  
R5 000 - R7 000

88

Spi ro Schwatenberg (1898-1922): A  
Pati nated Bronze Fi gure of Mal e  
Nude  
carryi ng a tool i n hi s ri ght hand,  
standi ng on a ci rcu lar pl i nth,  
marbl e base, si gned, base chi ps  
29,5cm hi gh  
ILLUSTRATED  
R2 000 - R3 000

89

A Si l vered-Bronze and Mal achi te  
Desk Ornament, Possi bl y Russi an,  
Late 19th Century  
i n the form of a bear cl utchi ng  
a tree trunk, besi de a l ater  
fol i ate and rockwork moul ded  
i nkpot hol der, rai sed on a square  
mal achi te base wi th appl i ed  
acanthus-l eaf border, on four bun  
feet, wear  
14cm hi gh  
ILLUSTRATED  
R3 000 - R4 000

90

A Hockl ey Abbeyn Brass-mounted  
Leather 50ft Surveyor's Tape  
Measure  
11cm di ameter  
R100 - R150

91

A Large Framed Tapestry  
machine-made, depicting a  
courtly couple beside a fountain  
before a landscape, enclosed within  
an acanthus-leaf border  
183 x 222,5cm  
R2 000 - R3 000

92

A Spotted Hyena Skull (Crocuta  
Crocuta)  
R200 - R300

93

An African Carved Wooden Spoon,  
1950s  
the handle with recumbent lion, on  
metal display stand, damage  
36cm long  
R400 - R600

94

A Boxed Barbie 'Bubblecut' Doll by  
Mattel, 1962 - 1967  
stock no 850, brunette, including  
various clothing accessories,  
original box with wear  
R700 - R900

95

A '4711' Tosca Clear-Glass Perfume  
Bottle and Stopper, 1950  
original labels, with contents  
18,5cm high  
R300 - R500

96

An Art Deco Sparklets Glass and  
Chrome Mesh Soda Siphon, Mid 20th  
Century wear  
34cm high  
R400 - R600

97

Three Wicker and Glass Bowls  
Designed by Pieter van Gelder,  
1930-1947  
each with tri form handles,  
removable glass liner, one later  
liner with chip, printed factory  
mark  
the largest 21cm diameter (3)  
R200 - R300

98

A Wittner Wood Pyramid Metronome,  
20th Century  
and A German Pyramid Metronome  
the larger 23cm high (2)  
R300 - R500

NO LOTS 99 - 100

## FURNITURE

101

A Cape Pine Kist, 19th Century  
hinged straight top, interior  
fitted with candle box  
42x79x47cm  
R2 000 - R3 000

102

A Cape Pine Kist, 19th Century  
hinged top with straps, sides with  
carrying handles  
452x93x49cm  
R2 000-R3 000

103

A Yellowwood and Stinkwood  
Kitchen Table, Early 20th Century  
three paneled top above two short  
drawers, on turned and tapered legs  
77x121x85cm  
R3 500 - R5 500

104

An Arts and Crafts Yellow Wood Bureau, early 20th Century  
fall front with fitted interior,  
stylised copper hinges  
116x83x33cm  
R4 000 – R6 000

105

A Continental Walnut Chest of Drawers, 19th Century  
straight stepped top with rounded corners above ogee drawer and three long drawers, on bracket feet  
109x100x50cm  
R4 500 – R6 500

106

A Continental Oak Corner Cupboard, Early 20th Century  
open shelves above two panelled cupboard doors, on straight base  
157x108x58cm  
R2 500 – R3 500

107

A Mahogany Leather Topped Pedestal Desk, 20th Century  
central long drawer, flanked by four short drawers  
79x153x82cm  
R5 000 – R7 000

108

A Serpentine Mahogany Centre Table, 19th Century  
moulded edge, plain frieze, central carved column with quadri form carved and scroll feet, with castors  
80x118x96cm  
R3 000 – R5 000

109

A Victorian Mahogany And Upholstered Armchair, 19th Century  
top carved crest, scrolled arms and carved frame, on cabriole legs  
R2 500 – R3 500

110

A George IV Rosewood Fold Over Card Table, 19th Century  
straight top with rounded edge, central tapering column, on scroll quadri form feet  
77x103x52cm  
R3 000 – R5 000

111

A Victorian Mahogany Three Drawer Chest of Drawers, 19th Century  
turned handles, on turned feet  
78x107x49cm  
R5 000 – R7 000

112

An Oak Dickens Desk, Late 19th Century  
carved backrail, central fitted slope flanked by carved cupboard doors, above single central carved drawer, flanked by four carved short drawers  
117x120x68cm  
R6 000 – R9 000

113

An Oak Occasional Drop Leaf Table, Early 20th Century  
hinged sides with rounded edges, barley twist legs, with hinged leg supports  
70x90x60cm  
R2 800 – R3 800

114

A French Style Limestone Washed Fall Front Bureau, 20th Century  
hinged cupboard door above two long drawers, on cabriole legs  
107x75x50cm  
R800 - R1 200

115

A French Style Limestone Washed Wardrobe, 20th Century  
curved and carved top above two linen fold cupboard doors, on wavy base, ball and claw feet  
220x140x60cm  
R3 000 - R4 000

116

A Spanish Style Side Table, 20th Century  
limestone top on wrought iron base, curved scroll legs with central stretcher  
64x120x60cm  
R1 000 - R1 500

117

A French Carved and Upholstered Armchair, Early 20th Century  
stuff over seat, carved and painted frame on tapering front legs  
R1 500 - R2 500

118

An Oak Double Bed, Early 20th Century  
carved and paneled headboard and footend, turned columns on either side  
142cm width  
R1 000 - R1 500

119

An Oak Occasional Table, Early 20th Century  
wavy top, curved frieze and legs, connected by a shelf  
74x50x50cm  
R600 - R900

120

An Oak Chest of Drawers, 19th Century  
two short drawers above three long drawers, on bracket feet  
10x90x50cm  
R4 500 - R6 500

121

An Oak Linen Press, 19th Century  
straight top above two paneled cupboard doors, above two short and three long drawers, on bracket feet  
223x110x48cm  
R9 000 - R12 000

122

An Ebony Gramophone Cabinet, Early 20th Century  
hinged lid, interior fitted with turntable, above paneled cupboard doors, on straight legs  
118x59x44cm  
R800 - R1 200

123

A Victorian Mahogany Open Buffet, 19th Century  
curved backslash with three open shelves, side carved scroll supports, two long drawers, on carved feet, with castors  
120x167x65cm  
R5 000 - R7 000



124

A Victorian Mahogany Extending Dining Table, 19th Century curved edges, on carved tapered legs, with castors, three extensible leaves

74x285x130cm

ILLUSTRATED

R12 000 - R18 000

125

A Set Of Eight Mahogany Chippendale Style Chairs, 19th Century including two carvers, each with stuff over seat (8)

R8 000 - R12 000

126

A Pair of Victorian Carved Armchairs, 19th Century each frame carved with scrolls and foliage stuff over back, arms and seat (2)

R3 000 - R5 000

127

A Victorian Mahogany Chest of Drawers, 19th Century straight top above a long fitted narrow drawer with slope, above three long drawers, on bracket feet

92x106x59cm

R5 000 - R7 000

128

A Cased Zenith Radiogramme, Early 20th Century interior fitted with radio, turntable and speaker aperture

92x60x42cm

R800 - R1 200

129

A Victorian Oak Library Table, 19th Century straight edged top above two drawers, carved fluted tapering legs, with castors

77x143x81cm

R7 000 - R10 000

130

A Victorian Mahogany Pembroke Table, 19th Century hinged sides with curved edges, single drawer with opposing faux drawer, on carved and tapered legs, with castors

74x99x109cm

R4 000 - R6 000

131

A Burr Walnut Piano Davenport, 19th Century top with three quarter pierced gilt metal gallery, hinged panelled cupboard door with fitted interior, above hinged slope front, interior fitted with writing slope, flanked by a cupboard, with carved and scroll front supports

126x85x64cm

ILLUSTRATED

R10 000 - R15 000

132

A Three Drawer Chest of Drawers, 19th Century top with box strutting, wavy base, on splayed legs

86x92x44cm

R5 000 - R7 000

133

A Mahogany Occasional Table,  
19th Century  
straight top, curved frieze,  
bulbous carved column, on tripod  
legs  
71x50x45cm  
R1 500 - R2 500

134

A Walnut Octagonal Work Table,  
19th Century  
hinged lid, fitted interior, on  
carved tripod legs  
72x44x44cm  
R3 000 - R5 000

135

A Cream Upholstered Four Seater  
Sofa, Modern  
straight back, barrel arms, on bun  
feet  
240cm width  
R3 000 - R5 000

136

A Danish Designed Rosewood  
Sideboard, 1960s  
straight top above two pairs of  
panelled doors  
62x165x45cm  
R4 500 - R6 500

137

A Teak Model 100 Rocking Chair,  
1960s  
designed by Soren Georg Jensen for  
Kubus Mobler  
ILLUSTRATED  
R7 000 - R10 000

138

A Set of Four Borge Mogensen Style  
Chairs, 1970s  
each beachwood, canvas and leather,  
two with arms (4)  
ILLUSTRATED  
R10 000 - R15 000

139

An L-Shaped Grey Upholstered Sofa,  
Modern  
in two parts, on steel frame and  
legs  
315cm long  
R4 000 - R6 000

140

An African Mahogany, Chrome and  
Glass Coffee Table, Modern  
rectangular, with overlapping  
square section  
61x225x80cm  
R2 000 - R4 000

141

An Ebony and Washed Beach Coat  
Cupboard by Peter Opsvik for  
Cylinder  
round uprights with biomorphic  
open apertures, signed  
195x70cm  
R4 000 - R6 000

142

A Victorian Mahogany Drum Table,  
19th Century  
round leather inset top, drawers  
and faux drawers below, on  
octagonal column, with tri form  
base, on bun feet  
124x74cm  
ILLUSTRATED  
R25 000 - R30 000

143

A Pair of Italian Giltwood Side Tables, Early 20th Century  
each top inset with needlepoint and fretwork, scroll and carved side uprights, on scroll feet  
70x51x45cm  
R18 000 - R24 000

144

A William IV Rosewood Fold Over Tea Table, 19th Century  
hinged top with round edges, carved bulbous column, on quadriform feet  
75x102x51cm  
R8 000 - R12 000

145

An Anglo Indian Rosewood Halfmoon Table, Early 20th Century  
carved and pierced shaped back splash, carved frieze and legs, joined by four carved stretchers, with bird form finial  
117x133x66cm  
R9 000 - R12 000

146

A Large Mahogany Architect's Pedestal Desk, 19th Century  
straight top above long drawer, interior fitted with slider and compartments, flanked by three drawers, on carved feet  
81x156x80cm  
ILLUSTRATED  
R40 000 - R60 000

147

An Oak Open Bookcase, Late 19th Century  
straight top, carved frieze and sides, on straight base  
118x92x33cm  
R1 800 - R2 400

148

A Mahogany Secretaire Bookcase, 19th Century  
dentelated top above two glazed cupboard doors, a hinged drawer front below, with fitted interior, above two short and two long drawers  
225x118x55cm  
R12 000 - R18 000

149

A Pair of George III Mahogany 'D' End Tables, Early 20th Century  
plain frieze on tapered legs, with block feet  
75x106x54cm (2)  
R6 000 - R9 000

150

A Mahogany And Ormalu Mounted Pier Cabinet, Late 19th Century  
top with gilt metal edging, above glazed cupboard door, on wavy base, applied with ormalu mounts  
118x81x32cm  
R7 000 - R10 000

151

A Mahogany Mirror Backed Sideboard, 19th Century  
glazed splashback with finials, above a long drawer and two panelled cupboard doors, on straight base  
188x140x56cm  
R5 000 - R7 000

152

A Mahogany Glazed Bookcase, Early 20th Century  
dentelated stepped top above two glazed paneled doors, a pull out slide and single drawer below, above a pair of cupboard doors  
215x111x40cm  
R7 000 - R10 000

153

A Regency Style Mahogany Extending Dining Table, Late 19th Century  
top with rounded corners and stringing, fluted tripod legs, on castors, one leaf extension  
77x194x92cm [extended]  
R4 500 - R6 500

154

A Cream Upholstered Armchair, Modern  
straight top and arms, on bun feet  
R300 - R400

155

An Oak Short Open Bookcase, Early 20th Century  
with three adjustable shelves, on straight base  
101x88x27cm  
R1 500 - R2 500

156

A Mahogany Three Tier Globe Wernicker Style Bookcase, Early 20th Century  
each tier with a pair of hinged and glazed cupboard doors, on straight base  
107x88x25cm  
R3 800 - R4 800

157

A Victorian Mahogany Short Wellington Chest, 19th Century  
with hinged sides and five graduated drawers  
75x51x41cm  
R3 500 - R5 500

158

A Stained Oak Provincial Work Table, 19th Century  
paneled top, straight legs joined by 'H' stretcher  
73x156x80cm  
R6 000 - R8 000

159

A Continental Pine Dresser, 19th Century  
carved and curved back splash with shelf, flanked by a short drawer, three short and two pairs of long drawers  
173x185x57cm  
R10 000 - R15 000

160

A William IV Mahogany Metamorphic Buffet, 19th Century  
moulded edged top, square supports joined by turned stretcher, carved scroll feet, on castors  
93x157x66cm  
R18 000 - R24 000

161

An Italian Walnut Centre Table, Early 19th Century  
round top with inlaid chess board, above drawers either side, on four carved figural legs  
82x137cm  
ILLUSTRATED  
R35 000 - R55 000

162

A Set of Six Regency Mahogany Dining Chairs, 19th Century  
two being armchairs, each fluted frame with curved and carved open back, leather covered seat, on front turned legs (6)  
R5 000 - R8 000

163

An Oak and Leather Upholstered Chaise Lounge, Late 19th Century  
scroll armed buttoned back in brown leather, backrest with spindlees and carved frame, on turned feet, on castors  
200cm long  
R6 000 - R9 000

164

An Oak Coffin, 18th Century  
hinged top, carved front panel, on straight carved legs  
120x62x42cm  
R3 000 - R5 000

165

An Oak Chest Of Drawers, 19th Century  
with three long drawers, on bracket feet  
84x95x53cm  
R4 000 - R6 000

166

A Stained Pine Drop Leaf Dining Table, 20th Century  
hinged sides, wavy supports, central stretcher  
77x90x120cm  
R2 000 - R3 000

167

A Set of Four Windsor Chairs, Early 20th Century  
each curved top, wheel form back with spindlees, on carved legs with stretcher (4)  
R1 000 - R1 500

168

An Elm Windsor Armchair, Early 20th Century  
en suite to previous lot  
R300 - R500

169

An Oak Three Glazed Door Bookcase, 20th Century  
straight top above three astragal glazed cupboard doors, with adjustable shelves  
153x200x35cm  
R6 000 - R9 000

170

A Camphor Wood Secretaire Campaign Military Chest, circa 1900  
in two parts, central hinged drawer, fitted interior, flanked by short drawers, above three long drawers, on turned feet, brass flush pulls  
108x98x48cm  
R20 000 - R30 000

171

A Victorian Walnut Corner Whatnot, 19th Century  
four shelves with turned uprights  
130x50x45cm  
R1 200 - R1 800

172

A Mahogany Fold Over Card Table, 19th Century

hinged top with stringing, frieze with ornamental mounts, on carved legs

75x92x46cm

R4 500 - R6 500

173

A Walnut Chest of Drawers, 19th Century

quarter veneered top above two short and three long drawers, on straight base, with bracket feet

95x107x56cm

R5 000 - R7 000

174

A Victorian Mahogany and Inlaid Writing Table, 19th Century

carved and inlaid backslash, leather inset slope, fitted interior, on tapered legs

94x52x52cm

R5 000 - R7 000

175

A Queen Anne Style Burr Walnut Bowfront Chest Of Drawers, Early 20th Century

quarter veneered top above four drawers, on cabriole legs

78x57x46cm

R3 200 - R4 200

176

A Birds Eye Maple and Rosewood Writing Table, 19th Century

top with central inlay, rounded corners, plain frieze, on barley twist supports and stretchers, on castors

74x92x52cm

R7 000 - R9 000

177

A Mahogany and Inlaid Pier Cabinet, 19th Century

frieze with boxwood inlaid motif, above central glazed cupboard door, applied with ornamental mounts

R3 500 - R5 500

178

A George III Mahogany Hanging Corner Cupboard, 19th Century

straight top above two cupboard doors, stringing throughout

105x75x45cm

R3 800 - R4 800

179

A Mahogany Open Bookcase, Late 19th Century

straight top with adjustable shelves

115x105x32cm

R3 000 - R5 000

180

A Walnut, Boxwood and Ebonised Writing Bureau, Late 19th Century

central mirror flanked glazed displays, above fall front slope, fitted interior, boxwood inlay throughout, wavy apron, on cabriole legs, applied with ornamental mounts

150x83x58cm

ILLUSTRATED

R10 000 - R15 000

181

A "His Masters Voice" Table Top Gramophone, Early 20th Century

oak case with turntable and crank, large red painted tin horn

R2 500 - R3 500

182

A Mahogany Pembroke Table, 19th Century plain top with hinged sides, double form cupboard doors each side, box striking throughout  
78x103x71cm  
R2 500 - R3 500

183

A Set Of Four Regency Mahogany Dining Chairs, 19th Century each stained curved back, drop in seat, on curved legs (4)  
R3 000 - R5 000

184

A Regency Mahogany Armchair, 19th Century  
en suite to previous lot  
R800 - R1 200

185

A Walnut Corner Armchair, 19th Century  
curved backrail, pierced back, outswept arms, on straight legs  
R700 - R1 000

186

A Burr Walnut And Inlaid Tilt Top Loo Table, 19th Century  
serpentine top with box striking, on bulbous carved column, on four carved legs, with castors  
75x155x111cm  
R7 000 - R10 000

187

A Sheraton Style Mahogany Occasional Table, Early 20th Century  
serpentine top, on tapered legs joined by curved 'X' stretcher  
65x59x45cm  
R300 - R500

188

A Victorian Mahogany Pedestal Desk, 19th Century  
red leather inset top above three short drawers, three short drawer pedestals, on straight base  
72x123x70cm  
R5 000 - R8 000

189

A Victorian Mahogany Chest Of Drawers, 19th Century  
with two line fold short drawers above two short and three long drawers  
136x126x57cm  
R6 000 - R9 000

190

A Victorian Mahogany Fold Over Card Table, 19th Century  
hinged top with rounded edges, carved frieze, bulbous column on four carved legs  
80x91x45cm  
R5 000 - R8 000

191

A Globe Wernicker Four Section Bookcase, circa 1900  
hinged glazed lead fronts, with original manufacturers label  
148x86x27cm  
R5 000 - R7 000

192

A Sati nwood Partners Desk, Late  
19th Century

leather inset top above  
twin pedestal s, each wi th a  
cupboard door and four drawers  
74x135x139cm  
R8 000 - R12 000

193

A Set Of Si x Farstrup Of Denmark  
Oak Di ni ng Chair s, 1970s  
each wi th curved back spl ats, stuff  
over seat, makers label on reverse  
(6)  
R4 000 - R6 000

194

A French Whi te Pai nted Armoi re,  
20th Century  
straight top above two panel led  
cupboard doors and three short  
drawers, on block feet  
203x190x69cm  
R7 000 - R10 000

195

An Uphol stered Armchair And  
Matchi ng Ottoman, Modern  
wi th loose cushi ons (2)  
R500 - R700

196

An Oak Round Drop Leaf Di ni ng  
Table, 19th Century  
hi nged oval si des, wavy fri eze,  
turned and carved legs joi ned by  
stretchers  
67x135x103cm  
R3 500 - R4 500

197

An Oak Tall boy Chest Of Drawers,  
19th Century  
straight top above two short and  
four long drawers, on bracket feet  
137x111x54cm  
R4 000 - R6 000

198

A Mahogany Corner Di spl ay Cabi net,  
Early 20th Century  
dentel ated top above a gl azed  
curved cupboard door, above a  
conformi ng cupboard door, on  
bracket feet  
181x65x44cm  
R4 200 - R5 200

199

An Edwardi an Mahogany Occasi onal  
Table, Early 20th Century  
on turned legs  
70x54x54cm  
R700 - R1 000

200

A Mahogany Coal Scuttl e, 19th  
Century  
hi nged lid wi th eboni sed  
stri ngi ng, si des wi th carryi ng  
handl es  
50x47x36cm  
R700 - R900

201

An Edwardi an Rosewood and Inl ai d  
Corner Cabi net, Early 20th Century  
open shel ves wi th mi rrored backs,  
above two panel led and i nl ai d  
cupboard doors and an open shel f,  
shel l moti fs throughout  
190x70x37cm  
R5 500 - R7 500



202

A Victorian Mahogany Pembroke Table, 19th Century  
hinged sides with single drawer and opposing faux drawer, central carved bulbous column on four fluted and carved legs, with brass caps and castors  
77x95x73cm  
R5 000 - R7 000

203

A Victorian Mahogany Chest Of Drawers, 19th Century  
with two short and three long drawers, on straight base  
120x117x48cm  
R5 000 - R7 000

204

A Pair Of Victorian Mahogany Narrow Cupboards, 19th Century  
each with straight stepped top above a panelled cupboard door (2)  
185x60x45cm  
R8 000 - R12 000

205

A Mahogany Stained Narrow Chest Of Drawers, 20th Century  
moulded edged top above six short drawers, on straight base  
141x42x55cm  
R2 500 - R3 500

206

A Walnut Fall Front Bureau, 19th Century  
hinged lid with fitted interior, above four drawers, on bracket feet  
96x65x43cm  
R4 000 - R6 000

207

A Walnut Open Double Bookcase, 20th Century  
straight top above two open apertures with adjustable shelves  
215x220x37cm  
R10 000 - R15 000

208

A Victorian Mahogany Bookcase, 19th Century  
stepped top above two glazed doors, carved sides, above two short drawers and two cupboard doors, on straight base  
214x121x46cm  
R10 000 - R15 000

209

A French Two Tier Occasional Table, Early 20th Century  
serpentine top with marble inset, curved supports with ornamental mounts, conforming shelf, with carrying handles, on splayed legs  
91x80x47cm  
R700 - R1 000

210

A Mahogany Fall Front Bureau, Late 19th Century  
hinged panelled front, fitted interior, above two long drawers, on straight legs  
99x76x45cm  
R3 800 - R4 800

211

A Mahogany Extending Dining Table, 19th Century  
central panel flanked by extension leaves, carved cabriole legs, on ball and claw feet  
75x233x98cm (extended)  
R7 000 - R10 000

212

A Mahogany Bowfront Sideboard, 19th Century  
stained top with striping, above three short drawers, on square tapered legs  
84x134x67cm  
R6 000 - R8 000

213

A Victorian Mahogany Pembroke Table, 19th Century  
single drawer with opposing faux drawer, on curved tapered legs, on castors  
73x95x98cm  
R3 800 - R4 800

214

An Oak Globe Wernicker Style Bookcase, Early 20th Century  
straight top above four glazed sections, with single drawer  
192x86x30cm  
R5 000 - R7 000

215

A Provincial Oak Work Table, 19th Century  
top with rounded corners, octagonal shaped legs, ends with 'X' form supports joined by stretchers  
84x182x91cm  
R7 500 - R9 500

216

A Chinese Elm Yolk Back Armchair, 20th Century  
lacquered frame with curved backsplat, curved arms, on straight legs with stretchers  
R1 000 - R1 500

217

An Oak Gateleg Table, 19th Century  
oval hinged sides, barley twist legs joined by an 'H' stretcher  
74x132x106cm  
4 500 - R6 500

218

A Victorian Rosewood Breakfront Side Cabinet, 19th Century  
frieze with inlay, central panelled cupboard door flanked by glazed cupboard doors, ornate mounts, on straight base  
105x165x35cm  
R9 000 - R12 000

219

A Victorian Mahogany Library Table, 19th Century  
leather inset top, four short drawers either side, on carved and fluted legs, with castors  
78x230x130cm  
R16 000 - R24 000

220

A Stained Oak Shop Counter, 19th Century  
front with half column uprights, rear with drawers and pigeon holes  
88x284x48cm  
R20 000 - R30 000

221

A Multi wood Shop Counter, 19th Century  
with numerous drawers and pigeon holes  
74x183x56cm  
R16 000 - R24 000

222

A Mahogany Bookcase Display,  
19th Century  
top with carved frieze, above four  
glazed cupboard doors, conforming  
drawers and low cupboard doors, on  
straight base  
252x187x63cm  
ILLUSTRATED  
R20 000 - R30 000

223

A French Mahogany and Ormalu  
Vitrine, Circa 1900  
rouge marble top, three quarter  
pierced ormalu gallery, single  
glazed cupboard door, applied with  
ormalu mounts, on cabriole legs  
142x72x34cm  
R10 000 - R15 000

224

An Oak Shop Display Cabinet, Early  
20th Century  
glazed top above four sets of three  
conforming drawers  
94x346x60cm  
R12 000 - R18 000

225

A Victorian Mahogany And Marble  
Console Table, 19th Century  
shaped marble top, frieze with  
single drawer, above scroll carved  
front legs, on shaped base  
84x120x43cm  
R4 000 - R6 000

NO LOTS 226 - 229

## LIGHTING AND MIRRORS

230

A Twelve Branch Crystal  
Chandelier, Mid 20th Century  
with cut-glass drippans, lozenges  
and drops  
70cm high  
R3 500 - R5 500

231

A Five Branch Crystal Chandelier,  
Mid 20th Century  
with cut-glass drippans, lozenges  
and drops  
80cm high  
R2 500 - R3 500

232

A Five Branch Crystal Chandelier,  
Mid 20th Century  
with cut-glass drippans, lozenges  
and drops  
55cm high  
R2 500 - R3 500

233

A Gilt Metal And Crystal Drop  
Chandelier, 20th Century  
with gilt metal leaf motifs and  
crystal drops  
69cm high  
R1 000 - R1 500

234

A Three Branch Silvered Metal And  
Cut-glass Chandelier, Modern  
with leaf form adornments and  
cut-glass drops  
90cm high  
R600 - R900

235

A Five Branch Cut-Glass  
Chandelier, 20th Century  
with cut-glass drip pans, lozenges  
and drops  
60cm high  
R2 000 - R3 000

236

A Twelve Branch Cut-Glass And  
White Painted Metal Chandelier,  
20th Century  
with central column and arms  
encrusted in cut-glass lozenges,  
drip pans and drops  
77cm high  
R2 000 - R3 000

237

A Vintage White Painted  
Metamorphic Wrought Iron  
Lampstand  
with scroll supports  
R500 - R700

238

A Three Branch White Painted Metal  
and Crystal Chandelier, Modern  
with leaf form decoration and  
crystal drops  
52cm high  
R500 - R700

239

A Brass and Glass Chandelier, Mid  
20th Century  
two painted glass apertures on 'S'  
scroll form brass arms  
62cm high  
R300 - R500

240

A Five Branch Silvered And Cut-  
Glass Chandelier, Mid 20th Century  
foliate scroll form arms with  
smokey grey cut-glass drops  
60cm high  
R500 - R700

241

A French Composition Three Branch  
Wall Light, 20th Century  
ribbon form wall bracket with  
three outswept arms  
56cm high  
R800 - R1 200

242

A Pair of Girandoles, Early  
20th Century  
each gilded composition frame with  
shell motif, mirror inset, above  
two arms below (2)  
80cm high  
R3 000 - R5 000

243

A Rococo Style Gilt Mirror, Mid  
20th Century  
the composition frame with foliate  
and scroll motif  
114x70cm  
R1 000 - R1 500

244

A Georgian Mahogany and Gilded  
Wall Mirror, Early 19th Century  
carved frame with gilded  
highlighting, having central oval  
mirror with inlaid fan motif  
85x60cm  
R3 500 - R5 500

245

A Victorian Gilt Gesso Wall Mirror,  
19th Century  
frame with budding flower motif  
75x58cm  
R400 - R600

NO LOTS 246 - 255

## CARPETS

256

A Vintage Kelim Runner  
brown field woven with stylised  
motifs  
400x82cm  
R2 500 - R4 500

257

A Hamadan Carpet  
geometric motifs on a red and blue  
ground, with double guardstrips  
164x108cm  
R1 800 - R2 400

258

A Baktari Carpet  
red field with geometric lozenges  
217x120cm  
R2 200 - R2 800

259

A Jalabar Pakistani Part Silk  
Carpet  
blue ground with brown lozenge  
motif  
173x143cm  
R5 000 - R7 000

260

A Shiraz Carpet  
red field with stylised floral  
motifs in blues and reds  
262x182cm  
R4 500 - R6 500

261

A Kashan Carpet  
red field, central medallion  
with floral motifs and double  
guardstrips  
370x284cm  
R8 000 - R12 000

262

A Ghom Part Silk Carpet  
tile motif with guardstrips  
200x135cm  
R7 000 - R10 000

263

A Kazak Carpet  
cream field with red brick floral  
motifs  
395x310cm  
R16 000 - R18 000

264

A Tabriz Carpet  
red field, central medallion, floral  
motifs with blue guardstrips  
385x235cm  
R4 000 - R7 000

265

A Yong Tagi Carpet  
cream field with geometric pink  
and blue motifs  
288x218cm  
R6 000 - R8 000

266

A Yong Tagi Carpet

red ground with blue and cream  
design

300x211cm

R6 000 - R8 000

267

A Hamadan Carpet

blue field with central stylised  
lozenges and double guardstrips

330x160cm

R5 000 - R7 000

268

A Hosi enabad Carpet

brown field with stylised  
geometric motifs

310x145cm

R4 500 - R6 500

269

A Chinese Wool Carpet

blue field with floral motif

309x210cm

R6 000 - R8 000

270

A Persian Style Carpet

gold ground with brown and yellow  
floral motifs

370x270cm

R2 000 - R3 000

271

An Afshar Carpet

blue field with urn, floral and  
bird motifs

435x300cm

R8 000 - R12 000

272

An Uzbek Runner

red ground with dark red geometric  
motifs

504x75cm

R4 500 - R6 500

273

A Yong Tagi Carpet

blue field with brown and beige  
floral motifs

282x158cm

R5 000 - R7 000

274

An Afghan Rug

red field with dark geometric  
designs

145x100cm

R1 500 - R2 500

275

An Afghan Carpet

red field with lozenge and floral  
motifs

335x260cm

R6 000 - R9 000

276

A Chinese Wool Rug

red field with cream motifs

155x80cm

R600 - R900

277

A Turkaman Carpet

coral field with stylised motifs

282x215cm

R4 000 - R6 000

NO LOTS 278 - 300

END OF SESSION ONE

## SESSION TWO

### PAINTINGS

301

George Wright

SHOEING

signed and inscribed with the title  
watercolour and heightening on  
paper

17 by 28cm

R5 000 - R7 000

302

Ted Hansen

SPIRITFIRES

signed

oil on board

60 by 90cm

R4 000 - R6 000

303

Sydney Turner

MOUNTAINS IN THE DISTANT VIEW

signed

oil on board

26 by 35cm

R2 000 - R3 000

304

Ralph Miller

THE CATHEDRAL

signed and dated 1973

watercolour on paper

16 by 14cm

R500 - R700

305

Wassily Kandinsky

COLOUR STUDY: SQUARES WITH  
CONCENTRIC CIRCLES

photolithograph

sheet size: 18 by 23cm

R500 - R700

306

Sir William Russell Flint

MAIDENS, two

photolithographs

sheet size: 18 by 26cm (the larger)

R1 200 - R1 800

307

Sir William Russell Flint

NUDE, two

lithographs printed in colours,

signed in the plate and signed in

pencil in the margins

sheet size: 35 by 50cm (each)

R1 500 - R2 000

308

Sir William Russell Flint

THE BATHS, and BARBASTES, two

lithographs printed in colours,

signed in the plate and numbered

846/850 and 653/850 respectively

sheet size: 55 by 70cm (each)

R1 200 - R1 800

309

Sir William Russell Flint

MADAME DU BARRY AS BACCHANTE

photolithograph, signed in the

plate and inscribed with the title

in pencil in the margin

sheet size: 40 by 26cm

R1 000 - R1 500

310

Sir William Russell Flint

MEMOIRS OF MADAME DU BARRY

photolithograph, signed in the

plate and inscribed with the title

in pencil in the margin

sheet size: 40 by 26cm

R1 000 - R1 200

311

Paul Wunderlich

FRAUENBAD

Lithograph, signed and numbered

50/75 in pencil in the margin

sheet size: 75 by 57cm

R5 000 - R7 000

312

Jules De Bruycker

FRUIT MARKET GHENT

etching, signed, numbered 10/50

and inscribed with the title in

pencil in the margin

sheet size: 64 by 53cm

R1 200 - R1 800

313

Marc Chagall

MUSEE DE MODERN ART

original French Exhibition Poster,

Marc Chagall, Ceret Musee d'Art

Moderne

sheet size: 64 by 41cm

R2 000 - R2 500

314

Michael Rothenstein

BIRDS

Lithograph printed in colours,

signed and numbered 26/100 in

pencil in the margin

sheet size: 33 by 45cm

R2 000 - R3 000

315

Michele Nigrini

MINNIMOMENT

signed and inscribed with the title

oil on board

24 by 19,5cm

R500 - R700

316

Isaac Robert Cruikshank

TOM, JERRY AND LOGIC, BACKING

TOMMY THE SWEEP AT THE ROYAL

COCKPIT, ART OF SELF DEFENCE: TOM

AND JERRY RECEIVING INSTRUCTION

FROM MR JACKSON AT HIS ROOMS IN

BOND STREET, FENCING: JERRY'S

ADMIRATION OF TOM IN AN ASSAULT

WITH MR O'SHAUNESSY AT THE ROOMS

IN ST JAMES STREET, TOM & JERRY

SPORTING THEIR BLUNT ON THE

PHENOMENON MONKEY, JACCO MACACCO

AT THE WESTMINSTER PIT, CRIBB'S

PARLOUT: TOM INTRODUCING JERRY

AND LOGIC TO THE CHAMPION OF

ENGLAND and A GAME OF WHIST: TOM

AND JERRY AMONG THE SWELL BROAD

COVES, six

aquatint, Sherwood Jones & Co

sheet size: 14 by 19cm (each)

R3 000 - R5 000

317

Giovanna Biallo

FIGURE

signed

monotype on rice paper

14 by 19cm

R500 - R700

318

Joan Gardy Artigas

NUDE

Lithograph, signed and numbered

15/75 in pencil in the margin

sheet size: 50 by 46cm

R4 000 - R6 000



319

W Jones

SAILBOATS AT DOCK

signed

oil on board

60 by 90cm

R3 000 - R5 000

320

Pieza Luprno

STUDY OF A HORSE

signed and dated 2004

mixed media on paper

74 by 52cm

R1 000 - R1 200

321

Bisierre Louttre

PICNIC EN PROVENCE

etching, signed, numbered 44/60 in

pencil in the margin and inscribed  
with the title on the reverse

sheet size: 33 by 29cm

R1 000 - R1 500

322

Patrick Criumplin

KARKOW POLANDS, and MELANTRICHOVA

STREET PRAGUE, two

lithograph printed in colours,

signed and dated 2005

sheet size: 30 by 20cm (each)

R1 000 - R1 200

323

Alexander Ivanoff

SLEEPING ANGEL

etching, signed and numbered

57/350 in pencil in the margin

sheet size: 32 by 32cm

R3 000 - R5 000

324

F Richardson

TRAWLERS OUTWARD BOUND

inscribed with the artist name and  
title on the stretcher

oil on panel

28 by 45cm

R15 000 - R20 000

325

Jurgen Gorg

INSCENIERUNG 3

etching, signed, dated 99,

inscribed with the title and

numbered 82/120 in pencil in the  
margin

sheet size: 40 by 30cm

R4 000 - R6 000

326

South African School

PINK LANDSCAPE

tapestry

60 by 60cm

R500 - R700

327

South African School

MOTHER AND CUB

tapestry

51 by 51cm

R500 - R700

328

South African School

MULTICOLOURED BIRDS

tapestry

45 by 45cm

R500 - R700

329

Baskin (South African School)

LANDSCAPE

signed and dated '82

acrylic on board

59 by 69cm

R700 - R900

330

South African School

ABSTRACT STILL LIFE

individually signed

oil on board

18 by 23,5cm

R500 - R700

331

Lucky Sibiyela

UMABATHA

a portfolio of 15 handprinted woodcuts based on the theatrical play Umabatha by Welcome Msimang, the play portrays historical Zulu events woven around Shakespeare's plot in Macbeth, the time period is early 19th century during the reign of the Zulu King Shaka and Dingane, published by Gallery 21, London and Johannesburg, in a limited edition numbered 1 to 225 plus 10 artists' proofs, of which this is number 199, each signed and numbered 199/225 in pencil in the margin

sheet size: 73 by 50cm

R10 000 - R15 000

332

Vumkosi Zulu

DOUBTFUL TOMAS

lithograph, signed, dated 73, numbered 4/80 and inscribed with the title in pencil in the margin

sheet size: 45 by 35cm

R1 000 - R2 000

333

Ben Macalala

FIGURES

signed and dated 85

mixed media on paper

55 by 36cm

R1 000 - R2 000

334

Ben Macalala

RESTING FIGURE

signed

mixed media on paper

60 by 50cm

R1 000 - R1 200

335

Ben Macalala

FIGURES

signed

mixed media on paper

31 by 22cm

R1 000 - R1 200

336

Frank Brown

SEVEN STAGES OF MAN

lithograph, signed, dated 77, numbered 8/15 and inscribed with the title in pencil in the margin

sheet size: 55 by 42cm

R500 - R700

337

Ishmael Thyssen

FIGURE UPON A HORSE

signed and dated 95

carved and incised wood panel

50 by 72cm

R2 000 - R3 000

338

Ishmael Thyssen

POLITICAL STRUGGLE

woodcut, signed, inscribed with the title and numbered 8/8 in pencil in the margin

sheet size: 34,5 by 42,5cm

R1 000 - R1 500

339

Joseph Muzondo

VIEWING SCULPTURES

collagraphon on fabriano, signed, dated 2012, inscribed with the title and numbered 1/10 in pencil in the margin

sheet size: 50 by 35cm

R3 000 - R5 000

340

Tyrone Appollis

RETURN TO NAMIBIA

woodcut, signed, dated '89, inscribed with the title and numbered 39/50 in pencil in the margin

sheet size: 41 by 51cm

R2 000 - R3 000

341

Joseph Muzondo

THE THUMB PRINT

linocut printed in colours, signed, dated 2015, inscribed with the title and numbered 1/20 in pencil in the margin

sheet size: 71 by 50cm

R3 000 - R5 000

342

Eric Mbatha

MINERS IN A CAGE

etching, signed, inscribed with the title and 'A/P' in pencil in the margin

sheet size: 70 by 50cm

R3 000 - R5 000

343

Eric Mbatha

ANXIOUS

woodcut, signed, dated 71, inscribed with the title and 'Artist Proof' in pencil in the margin

sheet size: 40 by 40cm

R2 000 - R3 000

344

Ezekiel Madiaba

GOSSIP

woodcut, signed, dated '74, inscribed with the title and numbered 12/20 in pencil in the margin

sheet size: 49 by 32cm

R2 000 - R3 000

345

Joel Mbuyisa

ZULU DANCER

signed and inscribed with the title carved wood

height: 30cm

R1 500 - R2 000

346

Ephraim Maponya

KALABAAS GAMES

woodcut, signed, dated 80, inscribed with the title and numbered 5/6 in pencil in the margin

sheet size: 52 by 37cm

R1 000 - R2 000

347

Ephraim Maponya

PRAYING FIGURES

woodcut, signed, dated 80,  
inscribed with the title and  
numbered 2/3 in pencil in the  
margin

sheet size: 52 by 37cm

R1 000 - R2 000

348

Dzuni sani Maluleke

MPIIMA VAYENI

woodcut, signed, dated 13,  
inscribed with the title and  
numbered 3/10 in pencil in the  
margin

sheet size: 50 by 71cm

R1 000 - R2 000

349

Margaret Maskew

HANDS

etching, signed, numbered 5/30 and  
inscribed with the title in pencil  
in the margin

sheet size: 22 by 18cm

R1 000 - R1 200

350

Katherine Bull

HOLIDAY IN CAPE TOWN IN THE 21ST  
CENTURY

etching, signed, dated 1999,  
inscribed with the title and  
numbered 41/50 in pencil in the  
margin

sheet size: 33 by 70cm

R3 000 - R5 000

351

Theys Nel

STILL LIFE

silkscreen printed in colours,  
signed and numbered 43/50 in  
pencil in the margin

sheet size: 48 by 62cm

R500 - R800

352

Andre van Zyl

BUSH DREAMS

etching printed in colours, signed,  
dated '92, numbered 4/75 and  
inscribed with the title in pencil  
in the margin

sheet size: 27 by 31cm

R1 000 - R1 200

353

Bernice Michelow

ABSTRACT

lithograph printed in colours,  
signed, dated 1983 and numbered  
63/100 in pencil in the margin

sheet size: 48 by 68cm

R500 - R700

354

Gregoire Boonzaijer

WIND SWEEPED TREES, TREES and STILL

LIFE, three

woodcuts, signed and dated in

pencil in the margin

sheet size: 35 by 25cm (each)

R5 000 - R7 000

355

Gregoire Boonzai er

THE DONKEY CART

woodcut wi th handcol ouri ng,

si gned and dated 1978

sheet si ze: 35 by 25cm

R3 000 - R5 000

356

Wal ter Batti ss

UNTITLED

si lkscreen pri nted i n col ours,

si gned and numbered 18/30 i n

penci l i n the margi n

sheet si ze: 61,5 by 42,5cm

LITERATURE

Wal ter Batti s: Gentl e Anarchi st,

i l lustrated i n col our on page 192

ILLUSTRATED

R30 000 - R40 000

357

Pi eter Van Der Westhui zen

NUDE FIGURES AND BIRDS, CAPE TOWN

si gned and dated '86

pen and i nk over penci l on paper

63 by 97cm

ILLUSTRATED

R38 000 - R48 000

358

Pi eter Van Der Westhui zen

PA EN KIND

handcol oured etchi ng

sheet si ze: 50 by 35cm

R2 500 - R3 500

359

Pi eter Van Der Westhui zen

MULTIPLE FIGURES

handcol oured etchi ng, si gned,

dated 67 and numbered 15/120 i n

penci l i n the margi n

sheet si ze: 36 by 31cm

R3 500 - R4 500

360

Pi eter Van Der Westhui zen

BENCH BOTTOMS

handcol oured etchi ng, si gned,

dated 67 and numbered 8/120 i n

penci l i n the margi n

sheet si ze: 23 by 29cm

R3 500 - R4 500

361

Pi eter Van Der Westhui zen

HOUSES ON A HILL

handcol oured etchi ng, si gned,

dated '08 and numbered 5/120 i n

penci l i n the margi n

sheet si ze: 30 by 35,5cm

R4 000 - R5 000

362

Pi eter Van Der Westhui zen

BABA BLUE

handcol oured etchi ng

sheet si ze: 28 by 26,5cm

R2 500 - R3 500

363

Pi eter Van Der Westhui zen

CHUPAH

handcol oured etchi ng, si gned,

dated 07 and numbered 57/120 i n

penci l i n the margi n

sheet si ze: 47 by 32cm

R5 000 - R7 000

364

Pi eter Van Der Westhui zen

ADMIRER

handcoloured etching, signed,  
dated 00 and numbered 80/120 in  
pencil in the margin  
sheet size: 42 by 36cm  
R4 000 - R5 000

365

Lambert Kriedemann

GRAND PARADE, CAPE TOWN

photolithograph, signed and  
numbered 62/450 in pencil in the  
margin  
sheet size: 46 by 68cm  
R500 - R700

366

Michael Stevenson/Hylton Nel

IN CONVERSATION WITH HYLTON NEL

exhibition poster  
sheet size: 82 by 58cm  
R1 000 - R1 200

367

Frederick Hutchison Page

DISTRICT SIX CAPE TOWN

signed, dated 81 and inscribed with  
the title on the reverse  
watercolour and ink over pencil on  
paper  
38 by 38cm  
ILLUSTRATED  
R7 000 - R9 000

368

Frederick Hutchison Page

MAN WITH BALLOON

signed and dated '75  
pen and ink over pencil  
46 by 24cm  
R7 000 - R9 000

369

Yoram Rosou

TREE

lithograph printed in colours,  
signed and numbered 21/90 in pencil  
in the margin  
sheet size: 70 by 60cm  
R800 - R1 200

370

Adelio Zagni Zeelie

DURBAN

signed, dated 1959 and inscribed  
with the title  
oil on board  
35 by 50cm  
R5 000 - R7 000

371

Kenneth Baker

STILL LIFE

signed  
oil on board  
45 by 36cm  
ILLUSTRATED  
R3 000 - R5 000

372

Bruce Hancock

HOUT BAY

signed  
oil on board  
40 by 30cm  
R3 000 - R4 000

373

Paul Guy Lavender

COTTAGE

signed  
oil on board  
45 by 54cm  
R1 200 - R1 800

374

Brian Robertson  
STILL LIFE WITH ROSES  
signed  
watercolour on paper  
32 by 48cm  
R1 000 - R2 000

375

Brian Robertson  
STILL LIFE WITH A BLUE VASE  
signed  
watercolour on paper  
48 by 32cm  
R1 000 - R2 000

376

S Madden  
DISTRICT SIX, two  
signed and inscribed with the title  
watercolour on paper  
27 by 36cm  
R2 000 - R3 000

377

Kobus Kotze  
FIGURES WALKING  
signed and dated '91  
watercolour on paper  
26 by 36cm  
R1 000 - R2 000

378

David Botha  
COTTAGES, ARNISTON  
signed  
watercolour over ink on paper  
35 by 29cm  
R3 500 - R4 500

379

David Botha  
FIGURES AT THE WATERS EDGE,  
ARNISTON  
signed  
watercolour over ink on paper  
28 by 38cm  
ILLUSTRATED  
R4 000 - R6 000

380

David Botha  
DORP STRAAT, STELLENBOSCH  
signed  
koki pen on paper  
38 by 56cm  
R4 000 - R6 000

381

Oli via Scholnick  
YELLOW ABSTRACT  
signed  
mixed media on paper  
75 by 57cm  
R1 500 - R2 000

382

Oli via Scholnick  
LANDSCAPE  
signed  
mixed media on paper  
75 by 55cm  
R1 500 - R2 000

383

Philippa Hobbs  
ACCEPT, and ABSTRACT, two  
signed  
mixed media on ceramic  
20 by 18,5cm (each)  
R3 000 - R5 000

384

Andrew Verster  
STILL LIFE WITH VESSELS  
signed  
pencil on paper  
23 by 26cm  
R1 000 - R1 500

385

Enslin du Plessis  
LANDSCAPE  
signed  
mixed media on paper  
26 by 32cm  
R3 000 - R5 000

386

Enslin du Plessis  
NEAR MUCH HADAM, HERTS  
signed and inscribed with the title  
on the reverse  
watercolour and ink over pencil on  
paper  
33 by 41cm  
R4 000 - R6 000

387

Enslin du Plessis  
JACK COPES COTTAGE  
signed and dated 1973  
mixed media on board  
44 by 59cm  
ILLUSTRATED  
R8 000 - R12 000

388

Lukas van Vuuren  
AFTERNOON FOAM  
signed, and dated 99 and inscribed  
with the title  
ink on UHI plastic  
125 by 125cm  
R4 000 - R6 000

389

Lukas van Vuuren  
PRECIOUS MOUNTAIN  
signed, dated ,99 and inscribed  
with the title  
ink on UHI plastic  
43,5 by 39cm  
R1 000 - R1 500

390

Lukas van Vuuren  
TOWARDS HARRISMITH OFS  
signed, dated 12,01 and inscribed  
with the title  
ink on UHI plastic  
61 by 60cm  
R1 500 - R2 000

391

Abigail Sarah Bagraim  
LAST REMAINING SHUL IN KOVNO  
signed, dated 98 and inscribed with  
the title on the reverse  
pastel on paper  
60 by 65cm  
R3 000 - R5 000

392

Caroline van der Merwe  
NUDE  
signed and dated 80  
ink on paper  
41 by 61cm  
R800 - R1 200

393

Clive van den Berg  
STILL LIFE  
signed and dated '86  
pastel on paper  
23 by 18cm  
R1 200 - R1 800



394

Gail Catlin

SMALL ENLONGATED NUDE

mixed media on stone

10 by 3,5cm

R1 200 - R1 800

395

Gail Catlin

BIRD

Liquid crystal and oil on glass

58 by 48cm

R5 000 - R7 000

396

Gail Catlin

COTTAGES IN A DISTANT LANDSCAPE

signed and dated 96

mixed media on board

30 by 27cm

ILLUSTRATED

R4 000 - R6 000

397

Gail Catlin

SEATED FIGURE

signed

mixed media on board

10 by 15cm

R1 800 - R2 400

398

Roy Allan

ABSTRACT FORMS

signed and inscribed with 'Cape  
Town 1971' and 'Feb-March 1971' on  
the reverse

acrylic on canvas

122 by 122cm

ILLUSTRATED

R3 000 - R5 000

399

Jill Trapler

BLUE ABSTRACT

signed and dated 03

mixed media on canvas

31 by 34cm

R1 800 - R2 400

400

Margold Evans

WINTER FIG TREE

signed

oil on board

22 by 30cm

R1 000 - R1 200

401

Dan Du Toit

LANDSCAPE

signed

oil on board

57 by 88cm

R1 000 - R1 200

402

Ann Nosworth

LANDSCAPES, two

signed

oil on board

39 by 49cm (each)

R3 000 - R5 000

403

Narine Desmond

BASUTO HUTS AND RIDERS

signed

watercolour on paper

33 by 47cm

R3 000 - R4 000

404

Tony Robt in  
SANDY BAY  
signed and dated '98  
oil on artist board  
39 by 49cm  
R3 000 - R5 000

405

Johan De Vries  
STILL LIFE  
signed and dated 96  
acrylic on board  
110 by 77cm  
R2 000 - R3 000

406

Anathi Tyawa  
STILL LIFE WITH CORN AND VESSEL  
signed  
oil on canvas  
24,5 by 34,5cm  
R2 000 - R3 000

407

Simon Jones  
DAVID  
signed and dated '83  
pencil and crayon on paper  
44 by 31cm  
ILLUSTRATED  
R3 000 - R5 000

408

Maggie Laubser  
PORTRAIT OF A GENTLEMAN  
signed with the artist initials  
pencil on paper  
17 by 13cm  
R7 000 - R9 000

409

Pranas Domsaitis  
FIGURE  
signed  
oil on board  
42 by 23cm  
ILLUSTRATED  
R12 000 - R18 000

410

S\* Hornsey  
STILL LIFE  
signed and dated '92  
oil on board  
40 by 51cm  
R1 000 - R1 200

411

Annette Barnard  
STILL LIFE WITH LAVENDER  
signed and dated 2000  
oil on board  
33,5 by 44,5cm  
R2 000 - R3 000

412

Sheila Geffen  
STILL LIFE  
signed  
mixed media on paper  
14 by 14cm  
R800 - R100

413

Dallas Smith  
SATIN WHITE REBATE  
signed and inscribed with the title  
on the stretcher  
oil on canvas  
20,5 by 20,5cm  
R1 200 - R1 800

414

Susan Ford

AFRICAN FIGURE

signed

mixed media on board

17 by 14cm

R1 000 - R1 200

415

Alex Hamilton

BOTEA MONA LISA

signed and inscribed with the title  
on the reverse

oil on canvas

100 by 78cm

R8 000 - R12 000

416

Jan (Johannes Wilhelmus)

Dingemans

ABSTRACT

signed and dated 89

oil on canvas

100 by 75cm

R4 000 - R6 000

417

Florence Louise Josephine Zerffi

STILL LIFE WITH RED TABLE CLOTH

oil on canvas

52 by 41cm

R2 000 - R3 000

418

Wonder

ABSTRACT, two

signed and inscribed 'From the  
Series Inside.....Out 2005 -  
2007'

mixed media on board

14,5 by 14,5cm (each)

R1 500 - R2 000

419

Leon De Bligny

KLIPWERK

signed, dated 08 and inscribed with  
the title on the reverse

oil on board

40 by 61cm

R2 500 - R3 000

420

Traude Krause

NAMIBIAN LANDSCAPE

signed and numbered 2/90

watercolour on paper laid down  
on card

31 by 52cm

R1 000 - R1 200

421

E\* Charlton-Smith

STILL LIFE

signed

oil on canvas

29 by 39cm

R2 000 - R3 000

422

Malachi Smith

COTTAGE

signed and dated 04

ink on paper

14 by 21cm

R1 500 - R2 000

423

Paul Savage

CAPE TOWN PIER

signed

oil on board

23 by 34cm

R1 000 - R1 500

424  
Peggy Del port  
MALAY  
signed, dated 79 and inscribed  
with the title  
ink on card  
14 by 50cm  
R800 - R1 200

425  
Tara\*  
GIRAFFE  
signed  
mixed media on paper  
68 by 55cm  
R1 000 - R1 500

426  
G W W Legg  
TIGER  
signed  
oil on board  
50 by 60cm  
R4 000 - R6 000

427  
Sol ly Di zner  
ABSTRACT  
signed and dated 57  
resin on a wooden base  
height: 9cm (excluding base)  
R1 000 - R1 500

428  
G S (Smart) Gumedé  
FIGURE CARRING A POT  
signed  
carved wood  
height: 50cm (excluding base)  
R2 000 - R3 000

429  
Keith Calder  
LEOPARD  
signed  
bronze  
height: 11,5cm (excluding base)  
R3 000 - R5 000

430  
Jean Ti ran  
FEMALE FIGURE  
signed, dated '06 and inscribed  
'AP'  
bronze  
height: 29cm (excluding base)  
R500 - R800

431  
Jean Ti ran  
FIGURE  
signed, dated '05 and inscribed  
'AP'  
bronze  
height: 20cm (excluding base)  
R500 - R800

432  
Gabriel Clarke Brown  
SELF PORTRAIT WITH EXODUS  
hardground, aquatint and hand-  
coloured, signed and numbered 6/20  
in pencil in the margin  
sheet size: 55 by 75cm  
R4 000 - R6 000

433  
Keith Alexander  
THE GABLE  
lithograph printed in colours,  
signed and numbered 54/150 in pen-  
cil in the margin  
sheet size: 53 by 43cm  
R6 000 - R8 000

434

Keith Alexander

THE GOURMET

Lithograph printed in colours,  
signed and numbered 15/200 in pen-  
cil in the margin  
sheet size: 53 by 43cm  
R6 000 – R8 000

435

Agam

ABSTRACT

signed and numbered 74/99 in the  
margin  
35 by 35cm  
R3 000 – R5 000

436

Ted Hoefsl oot

ZULU WOMAN

signed and dated '82  
mixed media on paper  
47 by 32cm  
R2 000 – R3 000

437

Jill Trappier

NUDE

signed  
mixed media on paper  
30 by 14cm  
R1 000 – R1 500

438

Ann Nosworth

THE GARDEN

signed  
oil on canvas  
100 by 150cm  
R6 000 – R8 000

439

J. Madden

COTTAGES BELOW A MOUNTAIN RANGE

signed  
oil on board  
39 by 49cm  
R2 500 – R3 500

440

J. Madden

TWO COTTAGES

signed  
oil on board  
39 by 49cm  
R2 500 – R3 500

441

Denzil Herri ng

STILL LIFE WITH ORANGES

signed  
oil on board  
45 by 60cm  
R2 000 – R4 000

442

Johan Manevl d

WORKERS

signed  
watercolour on paper  
37 by 52cm  
R1 000 – R1 500

NO LOTS 443 – 450

## SILVER AND METALWARE

451

Two Gold-Plated Cartier Lighters  
one with red enamel decoration,  
distress  
each 7cm high (2)  
R1 000 - R2 000

452

A Gold-Plated Dupont Lighter  
with reeding  
4,5cm high  
R1 000 - R2 000

453

An Electroplate Gallery Tray  
the pierced oval body with  
scrolling foliage, 45,5cm wide; and  
A Two-handled Tray, the pierced  
oval body with scrolling foliage  
57cm wide over handles (2)  
R800 - R1 000

454

A Cased Electroplate Milk Jug And  
Two-Handled Sugar Basin  
each boat-shaped body with wavy  
rim and ribbons, applied with  
scroll handles  
the sugar basin 6cm high (2)  
R500 - R700

455

A Pair of Electroplate Three-Light  
Candelabra  
each flared stem with a pair of  
scroll arms, urn-shaped sconces,  
raised on a square foot with  
fruiting vines  
25cm high (2)  
R500 - R700

456

An Electroplate Centrepiece, WMF  
the boat-shaped body centred with  
a panther raised on a column with  
four lion-masks, flanked by clear  
cut-glass bowls, chips, distress  
67cm wide  
ILLUSTRATED  
R8 000 - R10 000

457

A Silver Picture Frame,  
Indecipherable Makers Mark,  
Birmingham, 1899  
the heart-shaped frame chased  
with flowerheads and scrolling  
foliage, distress, 8cm high; and  
An Electroplate Picture Frame,  
the rectangular frame with  
flowerheads, distress  
7cm high (2)  
R800 - R1 000

458

A Miscellaneous Collection Of  
Silver Items, Various Makers And  
Dates, Birmingham, 1902-1931  
comprising: a caster, a milk jug  
and a silver-mounted glass scent  
bottle, distress  
218g weighable silver (3)  
R700 - R900

459

An Edwardian Silver Double  
Sovereign Holder, Indecipherable  
Makers Mark, Birmingham, 1902  
the kidney-shaped body with  
hinged cover, distress  
35g, 5,5cm wide  
R800 - R1 200

460

Two Silver Bon-Bon Dishes, Various Makers And Dates, Birmingham, 1909 And 1929  
various shapes and sizes  
75g in total (2)  
R500 - R600

461

A Miscellaneous Collection of Five Silver Napkin Rings, Various Makers And Dates, Birmingham and South African, 1933-1958  
various shapes and sizes, 3 fitted with liners  
63g weighable silver (5)  
R500 - R700

462

A George VI Silver Teapot And Hot Water Jug, Walker And Hall, Sheffield, 1938  
each stepped circular body engraved with an 'A', applied with a turned-wooden harp-shaped handle, the stepped hinged cover with turned-wooden circular finial, raised on a circular foot  
1025g in total, the hot water jug 17cm high (2)  
ILLUSTRATED  
R7 000 - R9 000

463

A Miscellaneous Collection Of Silver Spoons, Various Makers, Places And Dates  
various shapes and sizes  
131g in total (11)  
R1 000 - R2 000

464

Two Metal-Mounted Cut-Glass Scent Bottles  
various shapes and sizes; and A Silver Cigarette Cheroot Case, Thomas Henry Vale,  
Birmingham, 1913, of typical form, chased with leaves, distress  
6g (3)  
R400 - R600

465

A Set of Ten Silver Slipper Straw/Spoons, Hong Kong  
each stem in the form of bamboo and a further eight electroplate examples  
131g in total (18)  
R2 000 - R3 000

466

A Dutch Silver Box, 1876  
the shaped square body with hinged cover engraved with cartouches and scrolls  
32g, 5,5cm wide  
R200 - R300

467

A Pair Of Brass Candlesticks  
each twisted stem raised on a circular foot  
31cm high (2)  
R500 - R700

468

A Brass Fire Fender  
the rectangular body with a rail centred with an urn-shaped finial, flanked by scrolls  
128cm wide  
R1 200 - R1 800

469

A Brass Planter

the oval body with rope rim, scenes of figures riding horses, raised on four scroll feet

24cm wide

R500 - R700

NO LOTS 470 – 480

## JEWELLERY

481

A Miscellaneous Collection Of

Silver Jewellery Items

various shapes and sizes, comprising: a necklace, 2 brooches and a coin pendant (4)

R700 - R900

482

A 10ct Gold And Mabe Pearl Brooch/  
Pendant

of organic design centred with a mabe pearl; and A Pair of 9ct Gold and Fresh Water Pearl Drop Earrings, each pearl suspended from a gold twisted rope chain and screw-back butterfly (2)

ILLUSTRATED

R6 000 - R8 000

483

A Miscellaneous Collection Of Five

Silver Hinged Bangles

various designs, shapes and sizes

(5)

R2 000 - R3 000

484

A Miscellaneous Collection Of

Seven Silver Rings

various designs and sizes, each fitted with stones, distress (7)

R500 - R700

485

A Silver And Silver-Gilt Bracelet

stepped link design with beaded rims

approximately 185mm in length

R400 - R600

486

An 18ct Gold Diamond Ring

centred with an old-cut diamond

R500 - R700

487

A 15ct Gold And Diamond Necklace

centred with a round brilliant-cut

diamond, weighing approximately

0,70cts, on a Figaro chain, with a

later 9ct gold extender

approximately 427mm in length

R10 000 - R15 000

488

A Miscellaneous Collection Of

Three Pendants

various designs, shapes and size,

each fitted with stones (3)

R1 500 - R2 500

489

Two Yellow Metal Necklaces (2)

the longer approximately 500mm in

length

R300 - R500

490

A 18ct Gold And Diamond Ring, 1970

the geometric design set with four

round brilliant-cut diamonds,

in sizes, weighing approximately

0,80cts in total

ILLUSTRATED

R9 000 - R12 000



491

A 9ct Gold And Amethyst Ring  
centred with an oval amethyst  
R1 000 - R2 000

492

An 18ct Gold Diamond Ring  
the hammered band centred with  
a round brilliant-cut diamond,  
weighing approximately 0,10cts  
R2 000 - R3 000

493

A 9ct Gold and Smoky Topaz Ring  
centred with a emerald-cut smoky  
topaz  
R1 000 - R2 000

494

An 18ct Gold and Green Stone Ring  
centred with an oval green stone  
surrounded by coral design  
R3 000 - R4 000

495

A 14ct White Gold Sapphire and  
Diamond Ring  
centred with an oval sapphire,  
weighing approximately 1,50cts,  
flanked by round brilliant-cut  
diamond, weighing approximately  
0,25cts in total  
R3 000 - R4 000

496

Two Gold Rings  
various designs, shapes and sizes  
(2)  
R1 500 - R2 500

497

A 9ct Gold Ring  
centred with a 1972 one Rand gold  
coin  
R2 000 - R3 000

498

An 18ct Gold Amethyst Ring  
centred with an oval-cut amethyst,  
surrounded by a beaded design  
R3 000 - R4 000

499

A 9ct Gold And Citrine Ring  
centred with a emerald-cut  
citrine  
R1 000 - R2 000

500

A 9ct Gold And Garnet Cluster Ring  
centred with seven garnets  
R1 500 - R2 500

501

A 18ct Gold And Pearl Ring  
centred with a pearl  
R1 500 - R2 500

502

A 9ct Gold And Blue Stone Ring  
centred with an oval-cut blue stone  
flanked by smaller oval-cut blue  
stones  
R1 000 - R2 000

503

An 18ct Gold, Citrine, Tourmaline  
And Diamond Cluster Ring  
set with nine marquise-cut  
citrines and tourmaline and nine  
round-cut diamonds  
R2 000 - R3 000

504

An 18ct Gold, Emerald And Diamond  
Ring  
the band with linear design  
set with a emerald, weighing  
approximately 0,50cts and three  
round-cut diamonds  
R3 000 - R4 000

505

An 18ct Gold Band  
engraved on the inside  
R1 000 - R2 000

506

An 18ct Gold, Sapphire And Diamond  
Pendant  
the band of geometric design set  
with six round-cut sapphires,  
weighing approximately 0,28cts in  
total and six round-cut diamonds,  
weighing approximately 0,25cts  
in total  
R4 000 - R6 000

507

An 18ct Gold And Diamond Ring, 1970  
the band of openwork organic  
design, set with ten round  
brilliant-cut diamonds, weighing  
approximately 0,70cts in total  
R4 000 - R6 000

508

A 18ct Gold, Amethyst And Diamond  
Ring  
the band of openwork organic  
design, centred with a teardrop-  
cut amethyst, flanked by three  
round brilliant-cut diamonds,  
weighing approximately 0,20cts in  
total  
R3 000 - R4 000

509

An 18ct Gold, Emerald And Diamond  
Ring  
the band of linear design, set with  
five round-cut emeralds, weighing  
approximately 0,20cts in total,  
and seven round-cut diamonds,  
weighing approximately 0,15cts in  
total  
R3 500 - R4 500

510

An 18ct White And Yellow Gold,  
Emerald And Diamond Brooch And  
Earring Set  
of floral and ribbon design, set  
with round-cut emeralds, weighing  
approximately 0,40cts in total  
and round-cut diamonds, weighing  
approximately 0,20cts in total  
(3)  
R6 000 - R8 000

511

Two 18ct White Gold Bands  
various designs and sizes (2)  
R2 000 - R3 000

512

A Miscellaneous Collection Of Gold  
Earrings And A Pendant  
various designs, shapes and sizes  
(16)  
R3 000 - R4 000

513

A Group Of Six Silver Bangles (6)  
R200 - R300

514

A Pair Of 18ct Gold And Diamond  
Earring Clips  
each circular body with rope rim,  
centred with a round brilliant-cut  
diamond, weighing approximately  
0,80cts in total (2)

ILLUSTRATED

R9 000 - R12 000

515

A Gold Curb Link Bracelet  
with a 1.9ct charm  
approximately 190mm in length  
R5 000 - R7 000

516

A Silver And Pink Stone Ring  
R200 - R300

517

A Miscellaneous Collection of  
Costume Jewellery  
various designs, shapes and sizes  
(QTY)  
R1 000 - R2 000

518

A Miscellaneous Collection Of  
Costume And Silver Jewellery  
various designs, shapes and sizes  
(QTY)  
R1 000 - R2 000

519

Two Gold and Citrine Rings  
one set with a single round-cut  
citrine, the other with eleven  
round-cut citrine and seven  
pearls, one lacking (2)  
R1 200 - R1 500

520

A Cameo Brooch And Two Pairs Of  
Earrings (5)  
R700 - R900

521

A Gold-Plated Box Link Chain  
with a later gold-plated circular  
locket  
the chain approximately 460mm in  
length  
R300 - R400

522

A Cased Yellow-Metal Chain  
Bracelet  
approximately 200mm in length  
R400 - R600

523

A Cased 9ct Gold And Ivory Brooch  
NOT SUITABLE FOR EXPORT  
the oval body engraved with foliage  
and flowerheads surrounded by  
scrolls  
R1 200 - R1 500

524

A Gold-Plated Cameo Bracelet  
comprising thirteen cameos,  
distress  
approximately 180mm in length  
R1 500 - R2 500

525

A Cameo And Pearl Brooch/Pendant  
centred with a cameo surrounded by  
leaves and ten seed pearls  
R2 000 - R3 000

526

A 9ct Gold And Aquamarine Pendant  
centred with an oval-cut  
aquamarine surrounded by  
openwork scrolling foliage  
R1 200 - R1 500

527

A 9ct Gold And Coral Cameo Pendant  
R1 200 - R1 500

528

A Pearl Necklace  
with a silver clasp  
approximately 430mm in length  
R300 - R500

529

An 18ct Gold And Pink Stone Ring  
centred with a cushion-cut pink  
stone, surrounded by fifteen white  
stones  
R2 000 - R3 000

530

A Pair Of Apatite Earri ngs  
each wi th two round-cut apatite,  
surrounded wi th scrol l i ng fol i age,  
wi th 9ct gold butterflyes (2)  
R1 500 - R2 500

531

A Cased 9ct Gold Art Nouveau Hatpin  
wi th twisted finial  
R800 - R1 000

532

A Pair Of 9ct Gold Cameo Earri ngs  
each wi th a screw back (2)  
R400 - R600

533

A 18ct Gol d And Di amond Ri ng  
centred wi th a di amond, wei ghti ng  
approxi mately 0,40cts, wi th a  
scrol l of si x di amonds  
R5 000 - R7 000

534

A Mi scel l aneous Col l ecti on Of  
Jewel l ery And Unmounted Semi  
Preci ous Stones  
vari ous desi gns, shapes and si zes  
(QTY)  
R1 500 - R2 500

NO LOTS 535 – 550

## WATCHES

551

A Stai nless Steel Internati onal  
Watch Company, Ingeni eur, 1960's  
the cream ci rcul ar di al wi th  
lumi nescent baton numeral s, date  
aperture at 3 o'clock, l i nk strap  
wi th a fol di ng cl asp  
the bezel 37mm di ameter  
R18 000 - R24 000

552

A Stai nless Steel Omega Seamaster  
the purple ci rcul ar di al wi th  
baton numeral s, date aperture at 3  
o'clock, l i nk strap wi th a fol di ng  
cl asp, di stress  
the bezel 35cm di ameter  
R2 000 - R3 000

553

A Mi scel l aneous Col l ecti on Of  
Ei ght Marqui sette Watches  
vari ous shapes and si zes (8)  
R800 - R1 200

END OF SALE

NOTES:

# CATALOGUE TERMS

## AUCTION

any private treaty or auction sale at which a lot is offered for sale by the Company

## AUCTIONEER

the representative of the Company conducting an auction

## BIDDER

any person making, attempting or considering to make a bid or offer to buy a lot at an auction, or private treaty sale

## BUYER

the bidder who makes the bid or offer for any lot that is finally accepted by the auctioneer (after determination by the auctioneer of any dispute that may exist in respect thereof) at a sale of that lot, and (where the Buyer is an agent acting for a principal), the Buyer and the Buyer's principal jointly and severally

## BUYER'S PREMIUM

the premium payable by the Buyer of a lot to the Company on the sale of that lot, calculated on the hammer price of that lot at the relevant current rates

## CATALOGUE

any advertisement, brochure, estimate price list, condition report and other publication (in whatever medium, electronically or otherwise) published by the Company in respect of any auction CIRCA commonly used when the date of events is not known, such as publication dates or when the artist completed his/her work

## COMMISSION BIDDER

any person who is not physically in the auction location at time of auction, who makes a bid or offer to

buy by placing their maximum bid prior to the auction

## HAMMER PRICE

the bid or offer made by the Buyer for any lot that is finally accepted by the auctioneer (after determination by the auctioneer of any dispute that may exist in respect thereof) at a sale of that lot, together with VAT thereon (if any)

## LOT

any item or items to be offered for sale by the Company at an auction or private treaty sale

## PURCHASE PRICE

the hammer price of any lot at a sale thereof, plus the applicable Buyer's premium for that lot, plus all recoverable expenses for which the Buyer is liable in respect of that lot

## RESERVE

the confidential minimum hammer price (if any) at which a lot may be sold at an auction as agreed between the Seller of that lot and the Company in writing

## SALE

the sale of any lot at an auction, whether done by private treaty or auction sale, and "sell" and "sold" shall have corresponding meanings

## SELLER

the person named as the Seller of any lot, being the person that offers the lot for the sale

## TELEPHONE BIDDER

any person making, attempting or considering to make a bid or offer to buy a lot at an auction, who is not physically in the auction location at the time of the auction

## VAT

value added tax levied in terms of the Value Added Tax Act, 1991

## CONDITIONS OF BUSINESS

### COMMISSIONS

Buyer's Commission: 15% (+ VAT) for lots selling for, or below, R10 000. Thereafter, 12 % (+ VAT)  
Seller's Commission: 15% (+ VAT)

### INSURANCE

Omni shall be liable for insurance of consigned goods to the value of the low estimate  
Buyers and Sellers will be responsible for transit related insurance.

### TRANSPORTATION

Consignees shall be responsible for their own transport requirements

All collections of auction purchases are to occur within three days after the sale. Non-payers will be charged a penalty fee. Non-collectors will be charged storage fees

### PAYMENT

The following methods of payment are accepted:

CREDIT/DEBIT CARD - Visa and MasterCard only

A 3% bank charge will be added onto the buyer's commission for all card payments

EFT - Omni (Pty) Ltd  
First National Bank  
Branch: Claremont, Cape Town  
Branch Code: 200 109  
Account Number:  
6267 3572 246  
SWIFT: FIRNZ AJJ

Cash (limited to R5000 per invoice)

No cheques accepted

All payments are to occur within three days after the sale. Non-payers will be charged a penalty fee

Foreign payments are calculated at Prime Rate, in South African Rands, at the moment of payment  
Proof of Payments must be emailed to [accounts@omni.co.za](mailto:accounts@omni.co.za) or presented upon collection of purchases

International clients - VAT is non-refundable as this is levied on the auction service, not the product

A 3% internet surcharge will be added for items purchased online at [thesaleroom.com](http://thesaleroom.com) or [Invaluable.com](http://Invaluable.com)

### BIDDING

Bid forms are to be placed at least 24 hours prior to the auction

Telephone bids may be placed for items valued at R2000 or above  
A commission bid may be placed at the maximum amount you wish to bid for a specific item

Placing an absentee bid is a legally binding contract. Reneging will result in possible backlisting

## GENERAL BUYERS TERMS AND CONDITIONS

All items are sold "As is" and condition reports may be requested in writing

Opinions and condition reports are given to the best of our knowledge, however, we do recommend that you consult a professional restorer for more accurate reporting

In the event of a proven forgery, returns must be made within 30 days of the sale date and only upon presentation of a formal condition report  
For ivory and endangered species artefacts, it is the buyer's responsibility to arrange the necessary certificates, permits and documentation for export/import

## GENERAL SELLERS TERMS AND CONDITIONS

Sellers will be paid out after 30 working days provided the buyer has paid for his/her purchase

Withdrawal fees will be charged at the sum of the buyers and sellers commission rate. Sellers may withdraw up to 48hrs prior to the auction and in writing

EFT payments will not be made for credit notes less than R1 000. Funds will be held until all sales amount to R1 000 or more. Alternatively, cash can be collected by the seller in person

By entering into the seller's contract, the consignee acknowledges that they are the rightful owner of the property to be consigned

## GENERAL CONDITIONS OF SALE

Confidentiality – buyers and sellers information may not be released

Omni will not be held liable for any errors made in the catalogue

Sale dates and cancellations or re-scheduling of sales is solely at the discretion of Omni and its employees

Items not collected within a month of the auction shall be re-auctioned in order to cover operational costs

## GENERAL TERMS OF BUSINESS

Omni will not be responsible for any personal injury nor damages to property. Right of admission reserved.

Imagery on the website is reserved for Omni operational use and cannot be distributed or used for any other purposes





7



16



17



43



88



89



124



131



137



138



142



146

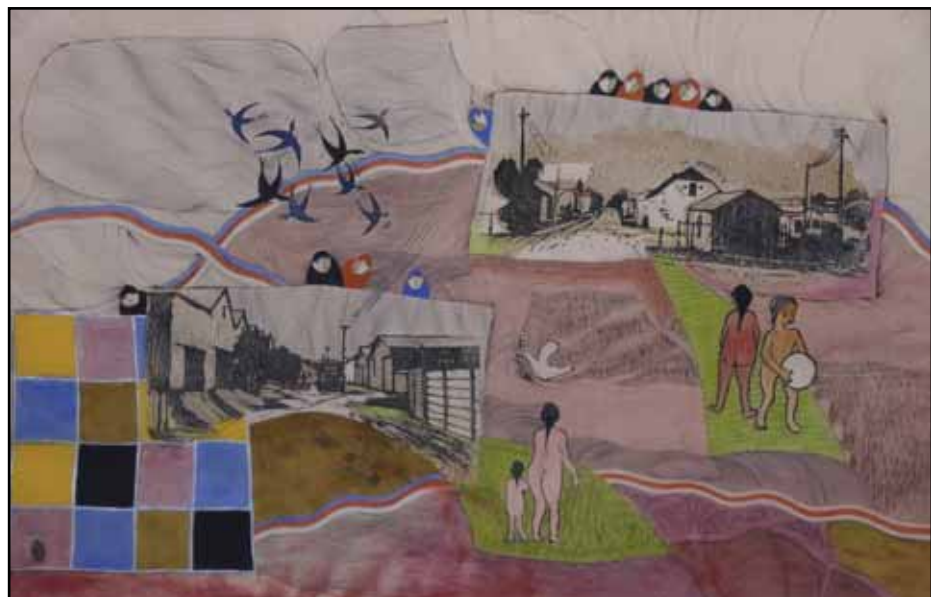


161

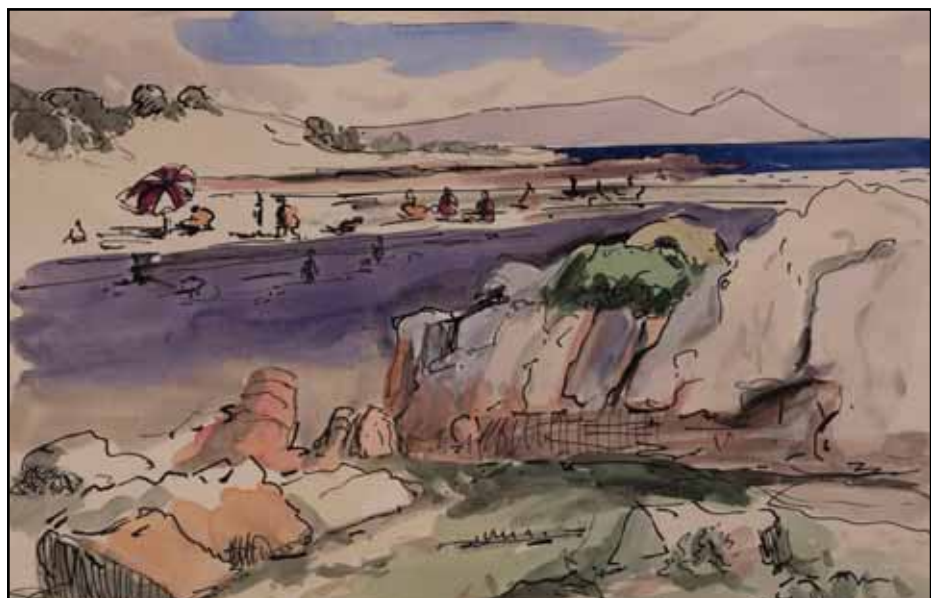








357



379









398



387



407



456



462



482



514