

SELECT AUCTION

CAPE TOWN | 31 OCTOBER 2017

SESSION ONE – 2PM

VERTU, ELECTROPLATE, SILVER AND METALWARE: Lots 1 – 30

A POCKET WATCH: Lots 31 – 40

JEWELLERY: Lots 41 – 60

DECORATIVE ARTS AND COLLECTABLES: Lots 61 – 130

PAINTINGS: Lots 131 – 240

FURNITURE AND LIGHTING : Lots 241 – 324

CARPETS : Lots 325 – 346



021 671 4497 | info@omni.co.za

9 Hemlock Street, Newlands

www.omni.co.za

SPECIALISTS AND SERVICES

WARREN SCHEUER

Managing Director
B.F.A (HON), P.D.J.M – RHODES
UNIVERSITY
warren@omni.co.za

SHONA ROBIE

Director | Office Manager |
Decorative Arts
B.A. (FA) – UNIVERSITY OF
CAPE TOWN
shona@omni.co.za

GARY SHEAN

Director | Fine Art
BBM – FBT COLLEGE
gary@omni.co.za

KAREN SHEAN

Silver | Jewellery Administrator
B.F.A – CAPE TOWN COLLEGE OF
FASHION DESIGN
karen@omni.co.za

NATHEMA VALLY

Graphic Design | Media
NHD: Graphic Design – CAPE
TECHNIKON
nathema@omni.co.za

ACCOUNTS

accounts@omni.co.za

BIDS OFFICE

bids@omni.co.za

ENQUIRIES

info@omni.co.za

VIEWING

Friday 27 October: 10am – 5pm

Saturday 28 October: 10am – 5pm

Sunday 29 October: 10am – 5pm

Monday 30 October: 10am – 5pm

Buyer's Premium is calculated at 12% plus VAT at the prevailing rate for items selling over R10 000 and 15% plus VAT for items selling for R10 000 or less at the prevailing rate.

Please note that all lots are sold as is.

Payments and collections are to take place no later than Friday 3 November.

VERTU, ELECTROPLATE,
SILVER AND METALWARE

1

A Gold-plated Dupont Lighter
with reeding
4,5cm high
R500 - R700

2

Two Gold-plated Cartier Lighters
one with red enamel decoration,
distress
each 7cm high (2)
R500 - R700

3

A Silver Double Sovereign Holder,
Indecipherable Makers Mark,
Birmingham, 1902
the kidney-shaped body with
hinged cover, distress
35g, 5,5cm wide
R500 - R700

4

A Six-piece Electroplate Tea and
Coffee Set
comprising: a teapot, a coffee pot,
a hot water jug, a milk jug, a two-
handled sugar basin and a two-
handled tray, each rectangular
body applied with a turned-
wooden harp-shaped handle,
raised on four pad feet
the tray 62cm wide over handle (6)
R1 500 - R2 500

5

A Pair of Electroplate Entrée
Dishes
each oval body with swags and
flowerheads, beaded rim, centred
with a scroll ring handle, 23cm
wide; and An Electroplate Tray,
the circular body chased with
scrolling foliage, beaded rim,
raised on four ball-and-claw feet
36cm diameter (3)
R600 - R800

6

A Pair of Electroplate
Chambersticks
each circular body with
gadrooned rim, applied with a
loop handle and snuffer
14,5cm diameter (2)
R500 - R700

7

An Electroplate-mounted Cut-
glass Claret Jug
the baluster body applied with
a collar chased with scrolling
foliage, C-scrolls and two vacant
cartouches, the hinged cover with
conforming decoration, applied
with a leaf-capped scroll handle
24cm high
R400 - R600

8

A Set of Electroplate Cutlery comprising: 9 table knives, 8 table forks, 9 tablespoons, 8 dessert knives, 10 dessert forks, 9 dessert spoons, 9 fish knives, 9 fish forks, 9 soup spoons, 8 grape fruit spoons, 10 teaspoons, a serving fork and a sugar sifter (100)

R1 000 - R2 000

9

An Assembled Set of Seventeen Silver Teaspoons, Various Makers and Dates, London, Sheffield, Birmingham, 1896-1965 various sizes

275g in total (17)

R1 500 - R2 500

10

A Pair of Silver Salt Cellars, Henry Matthews, Chester, 1906 each boat-shaped pierced body with swags and ribbons, applied with loop handles, raised on an oval foot, one with glass liner, the other with a plastic liner, 86g in total, 5,5cm high; and A Silver Basket, Levi & Salaman, Birmingham, 1903, the oval pierced body with scrolls, hinged handle, raised on scroll feet, glass liner

77g, 11cm wide (3)

R1 000 - R2 000

11

A Miscellaneous Collection of Silver Items, Various Makers and Dates, Birmingham and Chester, 1909-1947

comprising: a bracelet, a compact, a frame, a cigarette case and a chainmail purse

103g weighable silver (5)

R1 500 - R2 500

12

A Miscellaneous Collection of Silver Items, Various Makers and Dates, Chester and Continental, 1911

comprising: a pair of porcelain and silver-mounted cups, a bowl and a miniature horse and carriage

227g in total (4)

R2 500 - R3 500

13

A Collection of Six Silver Napkin Rings, Various Makers and Dates, Birmingham and Sheffield, 1932-1961

various shapes and sizes

139g in total (6)

R900 - R1 200

14

A Miscellaneous Collection of Silver Items, Various Makers and Dates, Birmingham and Continental, 1932

comprising: a cup and saucer, a silver-mounted glass bottle and 3 casters

63g weighable silver (5)

R2 000 - R3 000

15

A Collection of Three Silver
Cups, Various Makers and
Dates, Russian, Birmingham and
Continental

various shapes and sizes

119g in total, the largest 13cm
high (3)

R1 500 - R2 500

16

A Silver Box, Denmark
the rectangular body engraved
with initials, cedar-lined

14,5cm wide

R2 000 - R3 000

17

A German Silver Ladle, .800
Standard

150g

R800 - R1 000

18

A Pair of Silver and Stainless
Steel Salad Servers, Georg Jensen,
Denmark (2)

R1 000 - R2 000

19

A Cased Continental Silver Vanity
Set

comprising: a hand mirror, 2
brushes, in sizes, and a comb; and
A Silver Brush, Indecipherable
Makers Mark, Birmingham, 1934 (5)

R800 - R1 000

20

An Assembled Set of Continental
Silver and Electroplate Cutlery,
comprising: 6 spoons, in sizes and
2 forks, in sizes (8)

R800 - R1 000

21

A Copper Vase
the urn-shaped body chased
with scrolling foliage and
flowerheads, detachable flower
gird

16,5cm high

R200 - R300

22

A Copper Box
the rectangular body with hinged
cover stamped with a bird,
engraved 'J.P. 1902'

18cm wide

R800 - R1 000

NO LOTS: 23 - 30

A POCKET WATCH

31

A Stainless Steel Omega Pocket
Watch

the black and silvered circular
dial with Arabic numerals,
subsidiary seconds dial at
6 o'clock, distress

the bezel 45mm diameter

R5 000 - R7 000

NO LOTS: 32 - 40

JEWELLERY

41

Three Pairs of Gold Diamond
Earrings
each of various shapes and sizes,
two butterflies lacking (6)
R3 500 - R4 500

42

A Miscellaneous Collection of
Silver Jewellery
various shapes and sizes (QTY)
R1 000 - R2 000

43

Three Gold Solitaire Rings
two with various stones and the
other with a pearl (3)
R1 000 - R1 500

44

A 9ct Gold Necklace
with an emerald-cut blue stone
suspended on a chain
approximately 460mm in length
R900 - R1 200

45

An 18ct Gold Diamond Ring
centred with a round-cut
diamond surrounded by 6
round-cut diamonds, weighing
approximately 0,30 cts in total
R1 800 - R2 400

46

A 14ct Gold Diamond And Ruby Ring
centred with a pair of round-cut
diamonds and a pair of rubies
surrounded by scrolls
R500 - R700

47

A Miscellaneous Collection of
Gold Jewellery
various shapes and sizes (QTY)
R2 400 - R3 400

48

A Platinum Band
R500 - R700

49

A Krugerrand Pendant
the 1/4 Krugerrand set in a gold
mount, with a gold chain
the chain approximately 415mm
in length (2)
R3 000 - R4 000

50

An 18ct Gold Solitaire Diamond
Ring
centred with a round brilliant-
cut diamond weighing
approximately 0,25ct
R3 000 - R4 000

51

An 18ct Gold Diamond Dress Ring
with bands set with 22 round
brilliant-cut diamonds,
surrounded by 32 baguette-cut
diamonds, weighing approximately
1,45cts in total
R7 000 - R9 000

52

A Cased Miscellaneous Collection
of Costume Jewellery and Watches
various shapes and sizes, in a red
case (QTY)
R800 - R1 200

53

A Cased Miscellaneous Collection of Costume Jewellery various shapes and sizes, in a wooden box (QTY)
R500 - R700

54

A Cased Miscellaneous Collection of Costume Jewellery various shapes and sizes, in a leather box (QTY)
R500 - R700

55

A Cased Miscellaneous Collection of Costume Jewellery and Watches various shapes and sizes, in a wooden box (QTY)
R800 - R1 200

56

A Miscellaneous Collection of Silver Jewellery various shapes and sizes (QTY)
R2 000 - R3 000

57

A Gold-plated Cameo Bracelet comprising thirteen cameos, distress approximately 180mm in length
R900 - R1 200

58

A Gold-plated Box Link Chain with a later gold-plated circular locket the chain approximately 460mm in length
R200 - R300

59

A 15ct Gold Necklace centred with a round brilliant-cut diamond, weighing approximately 0,70cts, on a Figaro chain, with a later 9ct gold extender approximately 427mm in length
R7 000 - R9 000

60

A Silver and Silver-gilt Bracelet stepped link design with beaded rims approximately 185mm in length
R200 - R300

DECORATIVE ARTS AND COLLECTABLES

61

A Pair of Doulton Burslem Blue and White Globular Vases, 1891-1902 each painted with a cottage beside a windmill, one within a wooded landscape, the other before a seascape with boats, printed factory mark
19cm high (2)
R1 200 - R1 500

62

A Doulton Lambeth Stoneware 'Lord Nelson' Commemorative Vase, 1902-1922 tubular, moulded with rope-bordered panels enclosing a bust of Nelson, ships and a crown below a band 'ENGLAND EXPECTS EVERY MAN WILL DO HIS DUTY', impressed factory mark, X6423
13cm high
R2 500 - R3 500

63

A Bretby Art Deco Vase, 1930s
of tapering rectangular section,
each side moulded in low relief
with diagonal bands in shaded
mauve and yellow against a pale
turquoise ground, indented base
forming bracket feet, impressed
factory mark
15cm high
R2 000 - R3 000

64

A Clarice Cliff 'Trallee' Pattern
Basket-shaped Vase, 1930s
moulded overall with basket weave,
painted in shades of blue, yellow,
green, orange, brown and black,
printed factory mark
36cm high
R3 000 - R4 000

65

A Clarice Cliff 'Jonquil Delecia'
Pattern Dragon Jug, 1930s
the tapering ovoid body moulded
with flowerheads and foliage, the
handle terminating in a dragon-
mask, painted with flowerheads in
shades of green, yellow and orange,
printed factory mark
26cm high
R3 000 - R4 000

66

A Clarice Cliff 'Brookfields'
Pattern Vase, 1935
the tall ribbed tapering body
with spreading foot, painted with
a cottage amongst stylised trees
beneath fine blue and yellow
banding, restoration, printed
factory mark, moulded shape number
47cm high
R8 000 - R10 000

67

A Clarice Cliff Cream-glazed
'Indian Tree' Pattern Vase, 1940s
the tapering cylindrical body
relief moulded with blossoming
branches, three branch spur feet,
pale pink interior, restoration,
printed factory mark
34,5cm high
R2 000 - R3 000

68

A Royal Doulton Figurine 'Tinkle
Bell', HN1677, 1935
designed by Leslie Harradine,
printed factory mark; A Royal
Doulton Figurine 'Falstaff',
HN2054, 1940-1959, designed by
Charles Nokes, printed factory
and registration numbers; and
Two Earthenware Figurines of Mr
Pickwick and Mr Micawber
the tallest 18cm high (4)
R2 000 - R3 000

69

A Moorcroft 'Pomegranate' Pattern
Ginger Jar and Cover, 20th Century
signed, impressed factory mark
15cm high
R1 500 - R2 000

70

A Paragon Blue, White and Gilt Part Tea Service, 20th Century
each rim decorated with swags,
comprising: 9 cups and saucers, 10
plates, 2 cake plates, a milk jug
and a sugar bowl, hairline crack,
printed factory mark
the cake plate 24cm wide over
handles (32)
R2 000 - R3 000

71

A Royal Crown Derby 'Imari' Part Tea Service, Early 20th Century
comprising: 6 cups and 4 saucers,
a milk jug, rivet repairs, 5 plates
and a cake plate, printed factory
mark; and A Pointons 'Imari' Part
Coffee Service, comprising: 3 coffee
cans and saucers and a side plate,
printed factory mark
the cake plate 23cm diameter (24)
R1 500 - R2 000

72

A Large Sevres-style Gilt Metal
Mounted Two-handled Centerpiece
Bowl, Late 19th Century
the ovoid bowl painted with a
panel enclosing birds perched
amongst blossoms, the reverse with
a romantic figural scene, turquoise
ground, the interior with a bird
amongst blossoms, applied with
a gilt metal collar and foliate
scroll handles, fluted knopped
socle, on four outswept feet, shaped
oval base, gilding worn
33cm high
R8 000 - R10 000

73

A Sevres-style 'Entrevue du Camp du
Drap d'or' Platter, 19th Century
oval, depicting the meeting
between Francis and Henry VIII
between 7-24 June 1520 near Calais,
enclosed within a diaper blue
border, signed Moreau, painted
pseudo Sevres mark and title
46cm wide
R3 000 - R5 000

74

After Raffaello Sanzio (1483-1520):
A Continental Oval Plaque
'The Madonna Della Sedia' against a
red faux leather ground, within a
gilt scrolling foliate frame
the plaque 16cm high
R1 200 - R1 500

75

A Continental Porcelain Plaque,
Late 19th Century
rectangular, painted with a
gilt panel enclosing a farm girl
carrying a sheaf of wheat and a
sickle against a turquoise ground,
gilt frame
11cm high
R800 - R1 000

76

A Large Jacob Petit Jug, Late
19th Century
the lobed and fluted body painted
with two bands of alternating
panels enclosing floral sprigs,
birds and acanthus leaves, foliate
scroll handle, painted factory
mark, gilding worn
26cm high
R800 - R1 000

77

An Italian Majolica Wall Clock
the raised central circular
dial painted with Grotesques,
a Bacchanalian mask and Roman
numerals, an aperture below with
pendulum, surmounted by a maiden
mask flanked by cherubs, the sides
with scantily clad maidens, a
Bacchanalian mask below flanked by
scrolling foliage, painted factory
mark, with key
45cm high
R6 000 - R8 000

78

A Herend 'Iris' Pattern Two-handled
Vase, 20th Century
printed factory mark
24cm high
R2 000 - R3 000

79

A Thomas Rosenthal Gilt and White
Part Dinner and Coffee Service,
20th Century
each with a band of diamond
lozenges, comprising: 12 dinner
plates, 12 fish plates, 12 side
plates, 11 consommé cups and 12
saucers, 2 tureens, 2 oval platters,
a gravy boat on fixed stand, a
sauce ladle, 11 coffee cups and 12
saucers, a sugar bowl and cover and
a milk jug, chips, printed factory
mark
the platter 38cm wide (90)
R8 000 - R10 000

80

An Austrian Art Nouveau Vase, Early
20th Century
the squat bottle-shaped body
moulded in high relief with three
maidens swimming amongst waves,
shells and foliage, restoration
28cm high
R2 000 - R3 000

81

A Large Arabia 'Ruska' Pattern
Dinner, Tea and Coffee Service,
1962-1999
comprising: 14 dinner plates,
14 fish plates, 8 side plates, 10
dessert bowls, a dessert plate,
9 tureens and covers, one cover
lacking, an oval platter, a
circular platter, 4 egg cups, 2 soup
bowls, a salad bowl, 12 tea cups
and 13 saucers, 19 coffee cups and
19 saucers, 7 espresso cups and 6
saucers, 5 milk jugs, 3 teapots, 2
teapot strainers and 3 coffee pots,
one with cover, chips, printed
factory mark
the oval platter 36cm wide (154)
R6 000 - R8 000

82

A Villeroy & Boch 'Bon Appetit'
Pattern Part Dinner Service, 1983
comprising: 12 dinner plates, 12
fish plates, 12 side plates, 12
dessert bowls and 4 condiment
bowls, printed factory mark
the dinner plate 26,5cm diameter
(52)
R5 000 - R7 000

83

A Linnware Vase, 1940s
tapering ovoid with overall
mottled blue and turquoise glaze,
impressed studio mark; A South
African Black and White Painted
Flower Brick, Modern, decorated
with scrolling foliage, artist's
initials; and A Continental Blue
and White Flower Brick, 20th
Century, printed with the 'Onion'
Pattern
the vase 19cm high (3)
R2 500 - R3 500

84

Ralph Johnson (1943-): A Set of
Three White Glazed Vases, 2003
each of tapering cylindrical
form with rough seams, two
signed, numbered 36/60 and 37/60
respectively, dated 03
40cm high (3)
R1 500 - R2 000

85

Evette Weyers (1946-): A Pottery
Sculpture of a Centauride
depicting a male figure seated
astride a centauride, his hand
around her waist, with partial
mottled green and white glaze
51cm high
R10 000 - R15 000

86

Lynnley Watson (1951-): A
Turquoise-glazed Earthenware
Candelabra
the upswept scroll arms raised on
an incised cylindrical stem and
circular foot
29cm high
R1 000 - R1 500

87

A Chinese Blue and White Bowl,
Kangxi, 1662-1722
the centre painted with a fish
swimming amongst rocks and foliage
enclosed within foliate sprigs, the
rim with a border of foliage, the
exterior similarly painted with
fish below a diaper border, chips,
Kangxi mark
15cm diameter
R3 000 - R4 000

88

A Pair of Chinese Blue and White
Jars and Covers, Late 19th Century
each baluster body painted with
two sinuous dragons amongst
scrolling foliage, between lappet
bands, the domed cover with a Dog-
of-Fo finial, chips, pseudo Kangxi
mark
38cm high (2)
Exhibited at The South African
Cultural History Museum 'Chinese
and Japanese Export Porcelain
1600-1900' Exhibition at Groot
Constantia, 1980, no.51
R4 000 - R6 000

89

A Pair of Chinese Blue and White Jars and Covers, Late 19th Century each baluster body painted with panels of birds and butterflies amongst foliage, between lappet bands, the cover with Dog-of-Fo finial, repairs, chips, pseudo Kangxi mark; A Copeland Spode Blue and White 'Italian' Pattern Beaker, Late 19th Century, painted factory mark; An Earthenware 'Willow' Pattern Plate, cracks; and A Delft Blue and White Two-handled Planter, Modern
the jars 28cm high (5)

The Chinese jars and covers were exhibited at The South African Cultural History Museum 'Chinese and Japanese Export Porcelain 1600-1900' Exhibition at Groot Constantia, 1980, no.50
R1 200 - R1 500

90

A Chinese 'Rooster' Pattern Part Dinner, Tea and Coffee Service, 20th Century
comprising: 6 soup bowl, 6 side plates, a serving plate, 7 spoons, a ladle, a serving bowl, 7 tea cups and 6 saucers, 5 coffee cups and 6 saucers, a teapot, a milk jug and a sugar bowl and cover, printed script mark
the serving plate 26cm diameter (49)
R3 000 - R5 000

91

A Japanese Satsuma Vase, 20th Century
the tapering ovoid body painted with blossoming prunus branches against a mottled russet ground, the neck with a diaper border, hairline
24,5cm high
R1 200 - R1 500

92

An Akan Terracotta Head
of serene expression, straight pursed mouth, aquiline nose and raised coffee bean eyes beneath arched brows, high forehead with scarifications, the hair styled in elaborate coiffure in three progressively diminishing rows of crenulated protrusions, long neck with undulating rings, grey patina, chips
18cm high
R1 000 - R1 500

93

A Sherbro Stone Figure
carved as a crouching male figure holding his hands to his distended abdomen, large head with bulging eyes, his back grasped by a crocodile, the long snout appearing as a sagittal crest, evidency of red, black and grey patina, chips
25,5cm high
R1 000 - R1 500

94

A Japanese Sumidagawa Pottery Moonflask, Meiji, 1868-1912 of flattened globular form with off-set handle aperture, the neck and shoulders with mottled brown, blue and purple glaze running, applied in high relief with a pagoda and numerous monkeys against a partially russet lacquered ground
30cm high
R4 000 - R6 000

95

A Pair of Cut-crystal Decanters and Stoppers
;and A Pair of Tall Tapering Cylindrical Clear Cut-glass Jugs the jug 28cm high (4)
R900 - R1 200

96

A Part Suite of Gilt Rimmed Drinking Glasses, 20th Century comprising: 12 white wine, 10 red wine, 12 champagne coupes, 11 tumblers, 6 sherry and 9 liqueur (60)
R3 000 - R5 000

97

Three Art Deco Enamelled Glass Liqueur Sets, 1930/1940 variously decorated, comprising: 2 carafes with 6 glasses and a carafe with 4 glasses; and An Art Deco Enamelled Cocktail Set, comprising: a metal-mounted shaker and 4 glasses (24)
R3 000 - R4 000

98

Four Art Deco Gilt Decorated Glass Liqueur Sets, 1930/1940 comprising: 2 carafes with 6 glasses, a carafe with 4 glasses and another with 2 glasses (22)
R2 500 - R3 500

99

A WMF Ikora Iridescent Glass Vase, Early 20th Century the lobed trumpet-shaped body on a flared circular foot
11cm high
R1 500 - R2 000

100

A Flygsfors Sommerso Art Glass Bowl by Paul Kedelv, 1960s slender ovoid, green and pink bands encased in clear glass, signed; A Murano Sommerso Art Green Glass Bowl, 1960s, triangular with rounded corners; and A Lalique Opalescent 'Coquilles' Pattern Plate, moulded signature the plate 16,5cm diameter (3)
R2 000 - R3 000

101

David Reade (1960-): A Mottled Brown and Amber Art Glass Vase engraved signature
23,5cm high
R4 000 - R6 000

102

Three Framed Portrait Miniatures each painted on celluloid, two depicting a lady, the other a young girl, signed (3)
R1 500 - R2 000

103

A Victorian Gilt-metal-mounted and Glass Epergne, Late 19th Century
the spiral glass base with a gilt-metal scrolling foliate three branch holder with spiral fluted posy vases in clear glass
44,5cm high
R1 000 - R1 500

104

After Josef Lorenzl (1892-1950):
A Patinated Spelter Match Striker in the form of a standing young lady wearing a Raa-Raa skirt, on a square base, moulded Lorenzl, the base stamped ANR MADE IN AUSTRIA, lacking original striker
20cm high
R2 500 - R3 500

105

After Emmanuel Villanis (1858-1914): An Art Nouveau Bronze Bust 'Mignon'
depicting a young girl wearing a headscarf, raised on a circular marble column base, chips, signed Villanis, moulded title and stamped LU 41
19,5cm high
R3 000 - R4 000

106

A Vintage Mink Evening Clutch Bag with two silvered shoulder straps; and A Vintage Crocodile Evening Clutch Bag, of mustard tone, with yellow-metal shoulder strap, clasp lacking
the larger 21cm wide (2)
R1 000 - R1 500

107

A Vintage Mercedes Prima Typewriter
in original storage case
R700 - R900

108

A Deactivated Colt Frontier Six-Shooter Double-Action Army Revolver, Model 1878, 1878-1907
476 caliber, 4-3/4 barrel with contemporary London proof marks and marked 'COLT'S PT. F. A. MFG. CO. HARTFORD CT. U.S.A. DEPOT 14 PALL MALL LONDON', trigger-guard marked '476 CAL', chequered composition bird's head grips with oval rampant Colt medallion, wear
R6 000 - R8 000

109

A Jaques London 'In Statu Quo' Travelling Chess Set, Circa 1900
the hinged mahogany box opening to reveal inlaid rosewood and satinwood squares with inner locking mechanism, the bone pieces in natural and red stained, each applied with a brass locking pin, the box stamped 'JAQUES PATENTEES LONDON STATU QUO CHESS BOARD, in original slide-in case with faux lock, wear
R2 500 - R3 500

110

After Isidore Jules Bonheur (1827-1901): A Bronzed Figure of a Jockey and Mount
on a rectangular marble base
25cm high
R800 - R1 000

111

After Hippolyte François Moreau (1832-1927): A Patinated Bronze Figure of a Bacchante Emblematic of Autumn

the young maiden leaning against a pedestal, holding aloft a bunch of grapes, raised on waisted cylindrical base, moulded Moreau 55cm high

R7 000 - R9 000

112

Siegismund Wernekinck (1872-1921): An Alabaster Bust of a Young Girl, chips, incised Wernekinck, applied factory seal RvM to base

13cm high

R900 - R1 200

113

A Set of Six Chinese Ivory Serviette Rings, Late 19th Century
NOT SUITABLE FOR EXPORT

each carved with figures before a landscape with bridges and pagodas amongst trees

5,5cm diameter (6)

R3 000 - R5 000

114

A Chinese Gilt Lacquered Carved Wood Panel

rectangular, carved and pierced with three seated court officials flanked by warriors astride horses and attendants, wear

135cm long

R7 000 - R9 000

115

A Chinese Brass Mounted Rosewood Jewellery Box, 20th Century rectangular on bracket feet, applied with shaped panels engraved with peonies and mon, the top with a carrying handle, the single lockable hinged door opening to reveal two drawers, stamped SHANGHAI CHINA to base 17,5cm high

R2 000 - R 3000

116

A Chinese Watercolour, Early 20th Century rectangular, depicting a sampan on a river before a mountainous landscape, script, stamp marks, framed

103x24,5cm

R1 000 - R1 500

117

Two Japanese Woodblock Prints
After Hiroshige

one landscape, the other portrait, each depicting a sampan on a river before a landscape, framed

11x16,5cm (2)

R600 - R800

118

A Japanese Patinated Bronze Yoshimitsu-style Figure of a Warrior, Meiji, 1868-1912
the poised footsoldier preparing to draw his sword, wearing a breastplate beneath a loose robe, trousers and a headdress, raised on a rectangular stained-wooden base raised on two turned-wooden supports, sword blade lacking
31,5cm high excluding base
R12 000 - R15 000

119

A Kashmiri Zardozi Embroidered Panel
the rectangular black wool ground embroidered with gold, white and pink threads, the central rondel with tassel border surrounded by stylised flame lamps issuing foliate tendrils, the shaped corners with flowerheads and scrolling foliage, the border with geometric design amongst flowerheads
175x180cm
R7 000 - R9 000

120

An Indian Brass Pedestal Oil Lamp
the reservoir with nine spouts, on a tapering knopped column and circular flange base
86,5cm high
R5 000 - R7 000

121

An Anglo-Indian Bone and Mother-of-Pearl Inlaid Camphor Wood Box, Modern
rectangular, the hinged cover carved with animals amongst scrolling foliage issuing from rockwork, losses
27,5cm wide
R900 - R1 200

122

A Nepali Carved Teak Wood Bracket, 18th Century
the pierced rectangular panel carved with mythical creatures amongst foliage, wear
73,5cm long
R2 000 - R3 000

123

A Kashmiri Silvered Copper Samavar, 19th Century
the body with incised linear decoration, brass snake handle, raised on a reticulated circular foot, the domed cover with similar decoration and surmounted by a further hinged cover, opening to reveal a central coal chamber, distressed, repairs
32,5cm high
R1 000 - R1 500

124

A Morris Maple and Rosewood Classical Guitar
in case
R3 000 - R5 000

125

A Collection of Nine Anri and Oberammergau Carved Wood Religious Figurines, 20th Century some with stamped markers mark and paper label; and Three Further Wood Carvings, 20th Century, including a seated dog, one with stamped factory mark
the tallest 12,5cm high (12)
R4 000 - R6 000

NOT LOTS: 125 - 130

PAINTINGS

131

William Corwallis Harris (British 1807 - 1848)
XII. HIPPOPOTAMUS AMPHIBIUS. - THE HIPPOPOTAMUS
hand colour lithograph, signed in the plate
sheet size: 35 by 47cm
R6 000 - R8 000

132

William Corwallis Harris (British 1807 - 1848)
XVI. RHINOCEROS AFRICANUS; - THE AFRICAN RHINOCEROS
hand colour lithograph, signed in the plate
sheet size: 42 by 56cm
R6 000 - R8 000

133

Salvador Dali (Spanish 1904 - 1989)
THE MELTING PHONE
etching printed in colours, signed and inscribed "A.P." in pencil in the margin
sheet size: 32 by 27cm
R15 000 - R20 000

134

Salvador Dali (Spanish 1904 - 1989)
THE MELTING CLOCK
etching printed in colours, signed and inscribed "A.P." in pencil in the margin
sheet size: 30 by 23cm
R15 000 - R20 000

135

Marc Chagall (Russian/French 1887 - 1985)
DERRIERE LE MIROIR
lithograph printed in colours, signed and inscribed "A.P." in pencil in the margin
sheet size: 34 by 48cm
R15 000 - R20 000

136

John Piper (British 1903 - 1992)
LIAN-Y BLODWELL, SHROPSHIRE, MID 19TH CENTURY FURNISHING AND PAINTING
lithograph printed in colours, signed and numbered 31/70 in pencil in the margin
sheet size: 66 by 46cm
R5 000 - R7 000

137

John Piper (British 1903 - 1992)
LEWKNOR, OXFORDSHIRE
lithograph printed in colours on wove paper, signed and numbered 45/70 in pencil in the margin, from the Retrospective of Churches portfolio
sheet size: 81 by 60cm
R2 000 - R3 000

138

Bisierre Louttre (French *)
ABSTRACTS (FIVE)
etchings printed in colours, each
signed and numbered in pencil in the
margin
each sheet size: 75 by 60cm (5)
R3 000 - R5 000

139

Ronald Ossory Dunlop R.A (British
1894 - 1973)
INDISTINCTLY TITLED
etching, signed and inscribed with the
title in pencil in the margin
sheet size: 11 by 14cm
R7 000 - R9 000

140

Jean-Baptiste Valadie (French
1933 -)
TWO FIGURES
signed
oil on canvas
63 by 48cm
R4 000 - R6 000

141

Barry Craig (British 1902 - 1951)
WINTER ORCHARDS AT DE DOORNS, C.P
signed and inscribed with the title
on the reverse
oil on canvas
44 by 54cm
R6 000 - R8 000

142

Michael Richecoeur (American
1946 -)
LA SAIE
lithograph printed in colours,
signed, numbered 53/90 and
inscribed with the title in pencil
in the margin
sheet size: 50 by 70cm
R5 000 - R7 000

143

European School (20th Century)
KING AND QUEEN
indistinctly signed
pastel on paper
64 by 49cm
R4 000 - R6 000

144

Hennie Niemann Snr (South African
1941 -)
OU VISSERMAN
linocut, signed, dated 91,
inscribed "A.P." and the title in
pencil in the margin
sheet size: 22 by 18cm
R500 - R700

145

Hennie Niemann Snr (South African
1941 -)
OESTYD
linocut, signed, dated 79,
inscribed "Proef" in pencil in the
margin
sheet size: 24 by 33cm
R500 - R700

146

Gregoire Johannes Boonzaier (South African 1909 - 2005)

TWO DONKEYS

linocut with hand colouring,
signed and dated 1978 in pencil in
the margin

sheet size: 27 by 35cm

R2 000 - R2 500

147

Gregoire Johannes Boonzaier (South African 1909 - 2005)

DONKEY CART

linocut with hand colouring,
signed and dated 1976 in pencil in
the margin

sheet size: 35 by 27cm

R2 000 - R2 500

148

Gregoire Johannes Boonzaier (South African 1909 - 2005)

CHIPINI STREET, CAPE TOWN

linocut with hand colouring,
signed and dated 1978 in pencil in
the margin

sheet size: 37 by 35cm

R2 000 - R2 500

149

Gabriel Clarke Brown (South African 1965 -)

SELF PORTRAIT WITH EXODUS

hardground, aquatint and
handcoloured, signed, numbered
6/20 in pencil in the margin

sheet size: 55 by 75cm

R3 000 - R4 000

150

Fred Schimmel (South African 1928 - 2009)

ABSTRACT (THREE)

signed

mixed media on handmade paper
33 by 23cm (the largest) (3)

R2 500 - R3 500

151

Fred Schimmel (South African 1928 - 2009)

ABSTRACT COMPOSITION

signed

mixed media on handmade paper
66 by 50cm

R3 000 - R5 000

152

Fred Schimmel (South African 1928 - 2009)

ABSTRACT COMPOSITION I

signed

mixed media on handmade paper
66 by 50cm

R3 000 - R5 000

153

Pierre van der Westhuizen (South African *)

BATTLE OF THE ORGANISMS AND
EVERYTHING UNDER THE SUN

linocut, signed, dated 1991,
numbered 5/20 and inscribed with
the title in pencil in the margin

sheet size: 75 by 127cm

R4 000 - R6 000

154

May (Mary Ellen) Hillhouse (South African 1908 - 1989)

DYNAMIC RHYTHMS

signed, inscribed with the title and artist's name on the reverse

mixed media on board

45 by 35cm

R4 000 - R6 000

155

May (Mary Ellen) Hillhouse (South African 1908 - 1989)

MARKET

lithograph printed in colours, signed, numbered 5/20 and inscribed with the title in pencil in the margin

sheet size: 57 by 42cm

R2 000 - R3 000

156

Michele Nigrini (South African *)

PEAS IN A POD

signed

oil on canvas board

18 by 23cm

R2 000 - R3 000

157

Volga White (South African 1944 -)

STILL LIFE WITH FLOWERS

signed

oil on canvas

100 by 75cm

R3 000 - R5 000

158

Nico Verboom (South African 1927 - 2005)

STILL LIFE WITH FLOWERS

signed and dated 93

oil on canvas

76 by 54cm

R3 000 - R5 000

159

Pranas Domsaitis (South African 1880 - 1965)

MIXED FLOWERS NO.1

signed and inscribed with the title on the reverse

oil on board

55 by 40cm

R12 000 - R18 000

160

Reginald Turvey (South African 1882 - 1968)

STILL LIFE WITH FLOWERS

signed

oil on canvas

60 by 50cm

R3 000 - R5 000

161

Florence Louise Josephine Zerffi (South African 1882 - 1962)

STILL LIFE WITH STRELITZIA

signed and inscribed with the artist's name on the reverse

oil on canvas

70 by 55cm

R5 000 - R7 000

162

Alfred Krenz (South African 1899 - 1980)

A VIEW OF CAMPS BAY

signed and dated 51
watercolour on paper
35 by 50cm
R4 000 - R6 000

163

Clement Senéque (South African 1896 - 1930)

A VIEW OF THE DURBAN BOTANICAL GARDENS

signed and dated 51
mixed media on paper
32 by 26cm
R5 000 - R7 000

164

Clement Senéque (South African 1896 - 1930)

A PATH THROUGH DURBAN BOTANICAL GARDENS

pastel and charcoal on paper
31 by 25cm
R5 000 - R7 000

165

Adelio Zagni Zeelie (South African) DURBAN

signed, dated 1959 and inscribed with the title
oil on board
35 by 50cm
R3 000 - R5 000

166

Carlo Sdoya (South African 1914 - 1996)

TREES

signed
oil on board
41 by 50cm
R4 000 - R6 000

167

Cecil Higgs (South African 1898 - 1986)

TREES

signed
charcoal on paper
50 by 37cm
R2 000 - R4 000

168

Maurice Charles Louis van Essche (South African 1906 - 1977)

TREES

signed
mixed media on paper
34 by 24cm
R5 000 - R7 000

169

Chris Tugwell (South African 1938 -)

LANDSCAPE WITH TREES

signed
oil on board
34,5 by 49,5cm
R4 000 - R6 000

170

Pieter van der Westhuizen (South African 1931 - 2008)

STELLENBOSCH, BEELDENDE KUNSTE

signed, dated 76 and inscribed with the title
ink on paper
43 by 45cm
R2 000 - R3 000

171

Pieter van der Westhuizen (South African 1931 - 2008)

OSTRICH FARM

signed and dated 78

ink on paper

38 by 53cm

R2 000 - R3 000

172

Pieter van der Westhuizen (South African 1931 - 2008)

BANHOEK STRAAT, STELLENBOSCH

signed, dated 76 and inscribed with the title

ink on paper

40 by 42cm

R2 000 - R3 000

173

Pieter van der Westhuizen (South African 1931 - 2008)

MACGREGORE, K.P

signed and inscribed with the title

ink on paper

33 by 36cm

R2 000 - R3 000

174

Edward Roworth (South African 1880 - 1964)

EXTENSIVE SEASCAPE WITH MOUNTAINS

signed and dated 1917

oil on board

40 by 50cm

R6 000 - R8 000

175

Robert Broadley (South African 1908 - 1988)

BOULAN

signed

oil on board

50 by 40cm

R3 000 - R5 000

176

Peter Clarke (South African 1929 - 2014)

PORTRAIT OF SEGOVIA

signed and dated 2,8,1973

oil and gouache on card

57 by 42cm

R30 000 - R40 000

177

Peter Clarke (South African 1929 - 2014)

FIGURE AND LILLY, PALMS ON SIGNAL HILL, GUITAR PLAYER, WOMAN WALKING, GIRL WITH LILLIES, LOND BEACH, SIMON'S TOWN, GIRL WITH BIRDS (EIGHT)

signed

mixed media on paper

14 by 11cm (the largest) (8)

R12 000 - R16 000

178

South African School (20th Century)
CAT

indistinctly signed

oil on board

100 by 90cm

R3 000 - R4 000

179
John Dronsfield (South African
1900 - 1951)
THE MEXICAN HAT
signed, a SANG label appears on the
reverse
mixed media on paper
73 by 53cm
R7 000 - R9 000

180
John Dronsfield (South African
1900 - 1951)
TWO FIGURES SMOKING
signed and dated 41
ink on paper
50 by 37cm
R3 000 - R5 000

181
John Dronsfield (South African
1900 - 1951)
WASHER WOMAN
signed
ink on paper
45 by 35cm
R3 000 - R5 000

182
Cecil Higgs (South African
1898 - 1986)
SHELL
signed and dated 75
charcoal on paper
26 by 36cm
R3 000 - R5 000

183
Charles Gassner (South African
1915 - 1977)
LADY WITH LONG HAIR
signed and inscribed with the title
on the reverse
mixed media on paper
50 by 35cm
R2 000 - R4 000

184
Charles Gassner (South African
1915 - 1977)
NUDE WITH BOWL OF FRUIT
signed
charcoal on paper
28 by 36cm
R2 000 - R4 000

185
Charles Gassner (South African
1915 - 1977)
GREEN ABSTRACT
signed
mixed media on paper
55 by 75cm
R4 000 - R6 000

186
Otto Klar (South African
1908 - 1994)
ABSTRACT I, ABSTRACT II (TWO)
signed
mixed media on paper
18 by 15cm (the larger) (2)
R3 000 - R5 000

187
Pranas Domsaitis (South African
1880 - 1965)
A WINTER VILLAGE SCENE
signed with the artist's initials
pastel on paper
34 by 49cm
R7 000 - R9 000

188

John Dronsfield (South African
1900 - 1951)

PAYMENT DEFERRED

inscribed with the title

charcoal on paper

38 by 28cm

R3 000 - R5 000

189

Eris Silke (South African
1947 -)

PEOPLE ON STAIRCASE

signed, inscribed with the title on
the reverse

mixed media on paper

56 by 36cm

R5 000 - R7 000

190

Wolf Kibel (South African
1903 - 1936)

NUDES

authenticated by the artist's widow
on the reverse

watercolour and charcoal on paper

48 by 36,5cm

R14 000 - R18 000

191

Karin Jaroszynska (South African
1937 - 2014)

ABSTRACT

signed and dated 73

ink and wash on paper

41 by 66cm

R6 000 - R8 000

192

Olivia Scholnick (South African
1927 - 2015)

ABYSS

signed and dated 78

oil on canvas

90 by 90cm

R4 000 - R6 000

193

Olivia Scholnick (South African
1927 - 2015)

FERNS

signed and dated 09

oil on canvas

75 by 69cm

R2 500 - R3 500

194

Alice Tennant (South African
1890 -1976)

LIGHT HOUSE, SEA POINT

signed

mixed media on paper

25 by 34cm

R2 000 - R4 000

195

Francois Krige (South African
1913 -1994)

COAST LINE, GREECE

signed

ink on paper

32 by 22cm

R4 000 - R6 000

196

Cecil Higgs (South African
1898 -1986)

FIGURES ON A DONKEY CART

signed and dated 57

ink on paper

38 by 26cm

R2 500 - R3 000

197
John Henry Amshewitz (South African 1882 -1942)
MAN IN A TOP HAT
signed
mixed media on paper
16 by 20cm
R1 000 - R1 200

198
Cobus Van Bosch (South African 1962 -)
A PORTRAIT OF FRED PAGE
signed
oil on canvas
35 by 50cm
R3 000 - R5 000

199
Cobus Van Bosch (South African 1962 -)
A PORTRAIT OF ERNEST MANCORBA
signed
oil on canvas
35 by 50cm
R3 000 - R5 000

200
Carl Buchner (South African 1921 - 2003)
PORTRAIT OF A YOUNG BOY
signed
mixed media on paper
38 by 27cm
R5 000 - R7 000

201
David Botha (South African 1921 - 1995)
THE VEIL
ink on paper
55,5 by 24cm
R2 000 - R3 000

202
Gregoire Johannes Boonzaier (South African 1909 - 2005)
FIGURES WALKING THROUGH CAPE TOWN
signed and dated 1959
gouache on card
26 by 20cm
R15 000 - R20 000

203
Strat Caldecott (South African 1886 - 1929)
VILLAGE SCENE, FIGURE OUTSIDE A HUT
signed, a SANG label appears on the reverse
pencil on paper
32 by 48cm
R5 000 - R7 000

204
Strat Caldecott (South African 1886 - 1929)
FIGURES OUTSIDE HUTS
signed with the artist's initials and dated 27
pencil on paper
26,5 by 35,5cm
R6 000 - R8 000

205
Jan (Johannes Wilhelmus) Dingemans
(South African 1921 -2001)
VILLAGE WOMAN AND CHILD
signed
oil on paper laid down on board
36 by 54cm
R2 000 - R4 000

206
Herman Antonie Julien Henri van
Nazareth (South African 1936 -)
LANDSCAPE
oil on board
20 by 60cm
R5 000 - R7 000

207
Walter Edward Westbrook (South
African 1921 -)
EXTENSIVE LANDSCAPE
signed and dated 70
watercolour on paper
37 by 54cm
R6 000 - R8 000

208
Jan Ernst Abraham Volschenck
(South African 1859 - 1936)
THE OLD LANDMARK (MOZAMBIQUERS
KOP) RIVERSDALE
signed; signed, dated 1913 and
inscribed with the title on the
reverse
oil on canvas
R8 000 - R12 000

209
Florence Louise Josephine Zerffi
(South African 1882 - 1962)
LANDSCAPE
watercolour on paper
27 by 37cm
R2 000 - R3 000

210
Florence Louise Josephine Zerffi
(South African 1882 - 1962)
RIVER THROUGH A LANDSCAPE
oil on board
37 by 54cm
R3 000 - R5 000

211
Florence Louise Josephine Zerffi
(South African 1882 - 1962)
REVINE
signed
watercolour and charcoal on paper
26,5 by 36cm
R3 000 - R5 000

212
Florence Louise Josephine Zerffi
(South African 1882 - 1962)
CAPE POINT
signed and dated 59
oil on board
40 by 50cm
R3 000 - R5 000

213
Florence Louise Josephine Zerffi
(South African 1882 - 1962)
COTTAGE AMONGST TREES
signed and dated 49
oil on canvas
49 by 44cm
R3 000 - R5 000

214
Clement Seneque (South African
1896 - 1930)
MONT BLANC
inscribed with the artist's name,
the title and 1923 on the reverse
oil on board
33 by 29cm
R10 000 - R15 000

215
Pranas Domsaitis (South African
1880 - 1965)
TUGBOAT
signed with the artist's initials
pastel on paper
26 by 35cm
R8 000 - R12 000

216
Pranas Domsaitis (South African
1880 - 1965)
SNOW CAPPED MOUNTAINS IN A DISTANT
LANDCAPE
signed with the artist's initials
mixed media on paper
41 by 53cm
R7 000 - R9 000

217
Robert Broadley (South African
1908 - 1988)
RECLINING NUDE
signed
charcoal on paper
35 by 40cm
R2 000 - R3 000

218
* De Bucamps
THE STONE HEAVER
signed
oil on board
56 by 49cm
R7 000 - R9 000

219
Ann Nosworthy (South African
1927 -)
GEESE AT THE RIVERS EDGE
signed and dated 01
oil on canvas
76 by 100cm
R3 000 - R5 000

220
Gail Catlin (South African 1948 -)
LANDSCAPE
mixed media on board
70 by 85cm
R7 000 - R9 000

221
Scats Esterhuyse (South African
1954 -)
DIE WESSKIND
signed and dated 07 on the reverse
oil on board
28 by 37cm
R10 000 - R15 000

222
David Botha (South African
1921 - 1995)
ARNISTON
signed and dated 70
charcoal on paper
41 by 63cm
R4 000 - R6 000

- 223
Michael Albertyn (South African
1938 -)
SUNSET
signed
oil on board
49 by 74cm
R2 000 - R4 000
- 224
Frans Martin Claerhout (South
African 1919 - 2006)
FIGURES
signed
mixed media on paper
30 by 20cm
R4 000 - R6 000
- 225
Lucy Mary Wiles (South African
1920 - 2008)
TWO FIGURES ON THE BEACH
signed
oil on board
79 by 94cm
R5 000 - R7 000
- 226
Rachel Bomberg (South African *)
ABSTRACT
signed and dated 79
oil on canvas
130 by 150cm
R5 000 - R7 000
- 227
Derrick Van Rensburg (South
African *)
EAGLE
signed
mixed media
52 by 74cm
R8 000 - R10 000
- 228
South African School (20th Century)
FIGURES
mixed media on paper
46 by 70cm
R2 000 - R3 000
- 229
Charles Perse (South African *)
THE THAMES, LONDON
signed
mixed media on paper
70 by 53cm
R4 000 - R6 000
- 230
Piet Kannemeyer (South African
1917 - 1991)
GANSBAAI
signed and inscribed with the title
on the reverse
watercolour on paper
23 by 30cm
R3 000 - R5 000
- 231
Nesbert Mukomberanwa (Zimbabwean
1969 -)
VULTURE
signed
soapstone
height: 35cm
R1 500 - R2 000
- 232
Solly Malope (South African 1953 -)
HEAD
signed and dated 2003
pastel on paper
54 by 54cm
R3 000 - R5 000

233

Ben Macala (South African 1939 - 1997)

MOTHER AND CHILD

signed

pastel on paper

60 by 43cm

R800 - R1 000

234

Henry John Dykman (South African 1893 - 1972)

STILL LIFE WITH WHITE ROSES AND A VESSEL

signed

oil on board

45 by 60cm

R3 500 - R4 500

NO LOTS: 235 - 240

FURNITURE AND LIGHTING

241

An Edwardian Oak Low Cabinet, Early 20th Century

straight top above two short drawers and two cupboard doors

110x49x49cm

R800 - R1 200

242

A Victorian Oak Wall Cabinet, 19th Century

open swan neck top above two shelves and two carved cupboard doors

69x61x63cm

R700 - R1 000

243

A Rosewood and Inlaid Low Cabinet, 19th Century

straight top above two inlaid cupboard doors and a single ogee drawer

12x76x52cm

R4 000 - R6 000

244

A Teak Riempie Bench, Early 20th Century

wavy backrail, spindle back, curved arms, on turned legs

200cm long

R4 000 - R6 000

245

A Victorian Mahogany Breakfast Table, 19th Century

round moulded edge top, fluted tapered column, on triform base 142x76cm

R4 000 - R6 000

246

An Arts and Crafts Oak Hallstand, Early 20th Century

straight top, inset central mirror, above open shelf and glove box

200x117x31cm

R1 000 - R1 500

247

An Oak and Leather Upholstered Chaise Lounge, Late 19th Century

scroll armed, buttoned back, in brown leather, backrest with spindles and carved frame, on turned feet, on castors

200cm long

R6 000 - R8 000

248

A Teak Model 100 Rocking Chair,
1960s
designed by Soren Georg Jensen for
Kobus Mobler
R6 000 - R8 000

249

An Arts and Crafts Teak Sideboard,
Early 20th Century
straight top, open shelves flanked
by cupboard doors above three
large drawers
204x152x50cm
R2 500 - R3 500

250

A Mahogany Extending Dining Table
and Six Dining Chairs,
20th Century
table with rounded edges and three
leaves, chairs covered in red
Moroccan leather
75x190x112cm (extended) (7)
R4 000 - R6 000

251

A French Fruitwood Pedestal,
20th Century
curved top above four curved
drawers with Ormolu pulls
91x60x45cm
R1 600 - R2 400

252

A Mahogany Pedestal Desk, Early
20th Century
straight top above a central drawer
and four short drawers
on one side and a cupboard the
other side
79x150x85cm
R5 000 - R7 000

253

A George III Walnut Fall Front
Bureau, 19th Century
fitted interior, hinged cupboard
door above two drawers, on carved
cabriole legs
97x61x44cm
R4 000 - R6 000

254

A Mahogany Fold Down Table,
19th Century
hinged sides, tapered legs with
stringing
72x97x111cm
R2 000 - R3 000

255

A Camphor Wood Chest, Early
20th Century
hinged lid, interior fitted with
candle box, bone escutcheon
46x92x49cm
R1 500 - R2 500

256

A Mahogany Tilt Top Occasional
Table, 19th Century
round top, bulbous column, on
tripod legs
70x81cm
R2 500 - R3 500

257

A Set of Four Continental Mahogany
Dining Chairs, 19th Century
each with carved and curved
backrail, on front fluted legs (4)
R3 000 - R5 000

258

A Yellowwood Refectory Table,
Early 20th Century
plain top and frieze, on turned and
tapered legs
77x237x85cm
R7 000 - R10 000

259

A Victorian Mahogany Extending
Dining Table, 19th Century
top with rounded edges, fluted and
tapered legs, single extension leaf
72x146x105cm (extended)
R7 000 - R10 000

260

A Continental Fruitwood Chest of
Drawers, 19th Century
straigh top above a long and three
short drawers, Ormolu pulls
87x130x67cm
R6 000 - R9 000

261

A Victorian Mahogany Drum Table,
19th Century
round leather inset top, drawers
and faux drawers to frieze,
octagonal column, on triform base
124x74cm
R20 000 - R30 000

262

A Set of Four George IV Mahogany
Dining Chairs, 19th Century
each with carved backrail and
front turned legs (4)
R2 500 - R3 500

263

A Victorian Mahogany Pembroke
Table, 19th Century
moulded edged top, hinged cupboard
door, on fluted turned legs
79x74x55cm
R2 500 - R3 500

264

A Mahogany Bureau De Abbataatnt,
19th Century
marble top above a single drawer,
hinged cupboard door, fitted
interior, above two drawers
145x93x41cm
R6 000 - R9 000

265

An Edwardian Mahogany and Inlaid
Writing Table, Early 20th Century
tool leatherd inset top flanked
by short drawers with gilt brass
gallery, above two short drawers,
on tapered legs
90x105x59cm
R4 000 - R6 000

266

A Victorian Rosewood and Inlaid
Pier Cabinet, 19th Century
plain top above glazed cupboard
door, on straight base
118x80x29cm
R3 000 - R5 000

267

A Victorian Green Leather
Chesterfield Sofa
buttoned back arms, back and side,
with hinged conversion arm
170cm long
R8 000 - R12 000

268

An Edwardian Oak Low Cabinet,
Early 20th Century
straight top above two panelled
cupboard doors
86x76x40cm
R800 - R1 200

269

A Nest of Two Walnut Occasional
Tables, Early 20th Century
each with quarter veneered top, on
turned legs
64x37x37cm the larger (2)
R500 - R700

270

A Continental Oak Jardiniere,
Early 20th Century
ribbed curved body on three
outswept legs, brass liner
90cm high
R800 - R1 200

271

A Near Pair of Mahogany Child's
Chairs and Tables, 19th Century
each with curved backrail, wicker
back and seat, one with front guard
rail (4)
R4 500 - R6 500

272

A Mahogany Child's Chair and Table,
19th Century
curved backrail, wicker back and
seat, front guard rail (2)
R2 000 - R3 000

273

A Mahogany Child's Chair and Table,
19th Century
curved backrail, wicker back and
seat
(2)
R2 000 - R3 000

274

A Mahogany Child's Chair and Table,
19th Century
curved backrail, front guard rail
(2)
R1 800 - R2 400

275

A Mahogany Child's Chair, 19th
Century
curved backrail and arms, wicker
seat
R1 500 - R2 500

276

A Rosewood Wellington-style Chest,
Early 20th Century
straight stepped top above four
drawers, lockable hinged side
strips
85x94x50cm
R4 000 - R6 000

277

A French Walnut, Ormolu and Marble
Sideboard Display, Late 19th
Century
central mirror flanked by a glazed
cabinet, marble top, two drawers
and two cupboard doors
205x155x52cm
R7 500 - R9 500

278

A French Painted and Upholstered Double Bed, 20th Century curved backrail on headboard and conforming footend
150cm wide
R2 000 - R3 000

279

A Warings Double Door Satinwood and Inlaid Wardrobe, Early 20th Century
bowfront central cupboard above four short drawers flanked by mirrored cupboard doors
198x195x55cm
R15 000 - R20 000

280

A French Rosewood, Marble and Ormolu Vitrine, Late 19th Century top with three quarter gilt gallery above a single rounded glazed cupboard door, on cabriole legs
143x67x31cm
R7 000 - R9 000

281

A French Mahogany, Ormolu and Inlaid Sideboard Display, Late 19th Century
central mirror flanked by glazed cupboard doors above three short drawers and three conforming inlaid cupboard doors
218x135x57cm
R7 500 - R9 500

282

A George III Pine Work Table, Early 19th Century
panelled top, sides with 'X' stretcher, on octagonal carved legs
85x184x91cm
R10 000 - R15 000

283

A Victorian Oak Library Table, 19th Century
straight edged top above two drawers, carved fluted tapering legs, with castors
77x143x81cm
R5 500 - R7 500

284

An Oak Globe Wernicker-style Bookcase, Early 20th Century
four sectional front glazed cupboard doors above a single drawer
192x86x28cm
R4 000 - R6 000

285

An Oak Globe Wernicker-style Bookcase, Early 20th Century
three sectional front glazed cupboard doors, on straight feet
131x87x31cm
R4 000 - R6 000

286

An Edwardian Mahogany Cupboard Display, Early 20th Century
straight stepped top above three glazed cupboard doors
191x144x38cm
R5 000 - R7 000

287

A George IV Mahogany Bow Front Chest of Drawers, 19th Century
three long drawers, on bracket feet
85x94x55cm
R4 500 - R6 500

288

A Victorian Oak Leather Topped Pedestal Desk, 19th Century
straight top with central drawer
flanked by four short drawers
72x120x60cm
R5 000 - R7 000

289

A Set of Four Colonial Teak and Wicker Armchairs, 20th Century
each with straight arms, back and legs, the sides with cut outs (4)
R5 000 - R7 000

290

A Pair of Ecclesiastical Benches, 19th Century
each in a Gothic style
175cm long (2)
R8 000 - R12 000

291

An Oak Gateleg Dining Table, 19th Century
hinged sides, pull out leg supports, side columns connected by stretchers
68x145x126cm
R3 000 - R5 000

292

A Victorian Mahogany Chest of Drawers, 19th Century
two short and three long drawers, on straight base
120x117x48cm
R4 000 - R6 000

293

An Oak Shop Counter, Early 20th Century
glazed top with hinged doors, above four rows of three drawers
94x346x60cm
R10 000 - R15 000

294

A Mahogany Chest of Drawers, 19th Century
top with stringing, above two short and three long drawers
107x107x50cm
R5 000 - R7 000

295

A Pair of Rosewood and Upholstered Armchairs, 19th Century
each with camel back, with carved outswept arms, on cabriole legs (2)
R6 000 - R9 000

296

A Victorian Mahogany Centre Table, 19th Century
round top on bulbous column, set on tripod legs
72x122cm
R3 500 - R5 000

297

An Empire-style Vitrine, Early
20th Century

straight top above two glazed
cupboard doors flanked by half
round columns, ormolu mounts
169x124x50cm

R5 000 - R7 000

298

A Set of Eight Georgian-style
Dining Chairs, 20th Century
including two carvers, all on front
turned legs (8)

R4 000 - R6 000

299

An Empire-style Vitrine, Early
20th Century

straight top above two glazed
cupboard doors flanked by half
round columns, ormolu mounts
161x90x30cm

R4 000 - R6 000

300

A Pair of Mahogany and Ormolu
Mounted Narrow Vitrines, Early
20th Century

each bow front glazed cupboard
door with ormolu adornments
191x50x46cm (2)

R8 000 - R12 000

301

A Victorian Bamboo Hallstand, Late
19th Century

two square mirrors, with umbrella
and stick apertures
205x90x28cm

R1 200 - R1 800

302

An Embossed Leather Three Panel
Screen, Early 20th Century
in an Oriental style

145x165cm open

R1 500 - R2 500

303

A Mahogany Bookcase Display,
Early 20th Century

straight top above two astragal
glazed cupboard doors

163x115x33cm

R4 000 - R6 000

304

A Mahogany Service Counter,
19th Century

plain top, panelled front, each
with multiple drawers and pigeon
holes

89x247x47cm

R18 000 - R24 000

305

An Oak and Ebonised Turned Coal
Bucket, Late 19th Century
ring turned writhen body, brass
carrying handle

34x29cm

R800 - R1 200

306

An Alabaster Column, Late 19th
Century

carved column on soccle base
100cm high

R1 600 - R2 400

307

A Pair of Girandoles, Early 20th Century
each with oval bevelled plate,
gilt frame with three protruding
candlesticks
99x58cm (2)
R8 000 - R12 000

308

A Pair of French Gilt Metal Three
Branch Chandeliers, 20th century
each arm with scroll decoration
and pink glass shade
60cm high (2)
R7 000 - R10 000

309

A French Gilt-metal Five Branch
Chandelier, 20th Century
each arm with scroll decoration
and glass shade
63cm high
R4 000 - R6 000

310

A French Gilt-metal Three Branch
Chandelier, 20th Century
each arm with foliate scroll
decoration and glass shade
55cm high
R3 000 - R5 000

311

A Gilt-metal Three Branch
Chandelier Pendant, 20th Century
each arm with pink glass shade
43cm high
R2 500 - R4 500

312

A Brass Wall Sconce, 20th Century
each outswept arm terminating in
yellow glass shade
37x33cm
R800 - R1 200

313

A Tiffany Style Lead and Glass
Light Pendant Shade, Early 20th
Century
round lead shade with multi
coloured inset lozenges, on gilt
metal chain
36x14cm bowl
R3 000 - R5 000

314

A Brass and Glass Light Pendant,
Early 20th Century
straight brass column terminating
in pink hankerchief form glass
shade
74cm high
R700 - R1 000

315

A Set of Three Brass and Glass Wall
Lights, 20th Century
each adjustable arm terminating in
blue glass hankerchief form shade
42cm long (3)
R2 000 - R3 000

316

A Brass and Cut Glass Light Pendant,
20th Century
brass column terminating in leaf
form attachments and cut glass
shade
40cm high
R600 - R900

317

A Pair of Oxidised Metal and Cut Glass Light Pendants, Early 20th Century
each spiral column with leaf form attachments and cut glass shades
53cm long (2)
R700 - R1 000

318

A Pair of Gilt Metal and Glass Wall Sconce Lights, 20th Century
each foliate and scroll form arm terminating in hankerchief form glass shade
37x32cm (2)
R800 - R1 200

319

A Group of Six French Gilt-metal Wall Sconces, 20th Century
having ribbon form motifs (6)
R600 - R900

320

A Gilt Composition Girandole, 20th Century
round plate, wreath form mirror frame with a pair of electrified arms
5x42cm
R700 - R1 000

321

A French Gilt-metal and Crystal Drop Five Branch Chandelier, Early 20th Century
with crystal lozenges and decorated with drops
95cm high
R6 000 - R9 000

322

An Eight Branch Crystal Chandelier, Mid 20th Century
two tiered, having crystal drop decoration
70cm high
R6 000 - R9 000

323

A Lalique Style Chrome and Glass Light Pendant, Early 20th Century
chrome frame with opaque pink glass shade
81cm high
R2 500 - R3 500

324

A Brass and Glass Desk Lamp, Early 20th Century
carrying handle, straight column, writhen form arm with glass hankerchief frame
61cm high
R800 - R1 200

CARPETS

325

A Hamadan Carpet
164x108cm
R1 500 - R2 000

326

A Jalabar Pakistani Part Silk Carpet
174x143cm
R4 000 - R6 000

327

A Shiraz Carpet
262x182cm
R4 000 - R6 000

328
A Bakhtiari Carpet
217x120cm
R2 000 - R3 000

329
A Bokhara Runner
295x76cm
R3 000 - R5 000

330
A Hamadan Runner
300x70cm
R6 000 - R8 000

331
A Bokhara Runner
294x76cm
R2 500 - R3 500

332
An Afghan Runner
290x84cm
R2 700 - R3 700

333
A Bokhara Runner
318x76cm
R2 500 - R3 500

334
A Balouch Rug
136x90cm
R2 300 - R2 800

335
A Bokhara Rug
154x93cm
R2 500 - R3 500

336
A Karachi Rug
150x95cm
R2 500 - R3 500

337
A Ziegler Rug
157x93cm
R5 800 - R7 800

338
A Kazak Rug
148x97cm
R3 800 - R4 800

339
A Gabeh Carpet
289x270cm
R12 500 - R18 500

340
A Chobi Carpet
machine made
330x246cm
R16 000 - R24 000

341
A Farhan Carpet
275x208cm
R25 000 - R35 000

342
A Chobi Carpet
machine made
300x200cm
R47 000 - R57 000

343

A Chobi Rug

149x89cm

R4 800 – R6 800

344

An Abadeh Carpet

146x103cm

R6 500 – R8 500

345

A Vintage Persian Carpet

382x302cm

R30 000 – R40 000

346

A Vintage Persian Carpet

387x290cm

R30 000 – R40 000

END OF SALE

CATALOGUE TERMS

AUCTION

any private treaty or auction sale at which a lot is offered for sale by the Company

AUCTIONEER

the representative of the Company conducting an auction

BIDDER

any person making, attempting or considering to make a bid or offer to buy a lot at an auction, or private treaty sale

BUYER

the bidder who makes the bid or offer for any lot that is finally accepted by the auctioneer (after determination by the auctioneer of any dispute that may exist in respect thereof) at a sale of that lot, and (where the Buyer is an agent acting for a principal), the Buyer and the Buyer's principal jointly and severally

BUYER'S PREMIUM

the premium payable by the Buyer of a lot to the Company on the sale of that lot, calculated on the hammer price of that lot at the relevant current rates

CATALOGUE

any advertisement, brochure, estimate, pricelist, condition report and other publication (in whatever medium, electronically or otherwise) published by the Company in respect of any auction

CIRCA

commonly used when the date of events is not known, such as publication dates or when the artist completed his/her work

COMMISSION BIDDER

any person who is not physically in the auction location at time of auction, who makes a bid or offer to

buy by placing their maximum bid prior to the auction

HAMMER PRICE

the bid or offer made by the Buyer for any lot that is finally accepted by the auctioneer (after determination by the auctioneer of any dispute that may exist in respect thereof) at a sale of that lot, together with VAT thereon (if any)

LOT

any item or items to be offered for sale by the Company at an auction or private treaty sale

PURCHASE PRICE

the hammer price of any lot at a sale thereof, plus the applicable Buyer's premium for that lot, plus all recoverable expenses for which the Buyer is liable in respect of that lot

RESERVE

the confidential minimum hammer price (if any) at which a lot may be sold at an auction as agreed between the Seller of that lot and the Company in writing

SALE

the sale of any lot at an auction, whether done by private treaty or auction sale, and "sell" and "sold" shall have corresponding meanings

SELLER

the person named as the Seller of any lot, being the person that offers the lot for the sale

TELEPHONE BIDDER

any person making, attempting or considering to make a bid or offer to buy a lot at an auction, who is not physically in the auction location at the time of the auction

VAT

value added tax levied in terms of the Value Added Tax Act, 1991

CONDITIONS OF BUSINESS

COMMISSIONS

Buyer's Commission: 15% (+ VAT) for lots selling for, or below, R10 000, and 12 % (+ VAT) for items selling above R10 000.

Seller's Commission: 15% (+ VAT)

INSURANCE

Omni shall be liable for insurance of consigned goods to the value of the low estimate

Buyers and Sellers will be responsible for transit related insurance.

TRANSPORTATION

Consignees shall be responsible for their own transport requirements.

All collections of purchases are to occur within three days after the sale. Non-payers will be charged a penalty fee. Non-collectors will be charged storage fees.

PAYMENT

The following methods of payment are accepted:

CREDIT/DEBIT CARD - Visa and Master Card only (excluding international buyers)

A 3% bank charge will be added onto the buyer's commission for all card payments

No cheques accepted

EFT - Omni (Pty) Ltd
First National Bank
Branch: Claremont, Cape Town
Branch Code: 200 109
Account Number:
6267 3572 246
SWIFT: FIRNZ AJJ

Foreign payments are calculated at Prime Rate, in South African Rands, at the time of payment. No credit card payments will be accepted from countries outside of South Africa.

Proof of Payments must be emailed to accounts@omni.co.za or presented upon collection of purchases.

International clients - VAT is non-refundable as this is levied on the auction service, not the product

A 3% internet surcharge will be added for items purchased online at thesaleroom.com or Invaluable.com

BIDDING

Bid forms are to be placed at least 24 hours prior to the auction.

A commission bid may be placed at the maximum amount you wish to bid for a lot.

Placing an absentee bid is a legally binding contract. Reneging will result in possible blacklisting.

GENERAL BUYERS TERMS AND CONDITIONS

All items are sold "As is".
Condition reports may be requested in writing from the specialist.

Opinions and condition reports are given to the best of our knowledge, however, we do recommend that you consult a professional restorer for more accurate reporting.

In the event of a proven forgery, returns must be made within 30 days of the sale date accompanied by a formal written report.

For ivory and endangered species artefacts, it is the buyer's responsibility to arrange the necessary cites, permits and documentation for export/import

GENERAL SELLERS TERMS AND CONDITIONS

Sellers will be paid 30 days from date of sale.

Withdrawal fees will be charged at the sum of the buyer and seller commission rate. Sellers may withdraw up to 48hrs prior to the auction and in put writing.

By entering into the seller's contract, the consignee acknowledges that they are the rightful owner of the property to be consigned

GENERAL CONDITIONS OF SALE

All buyers and sellers information is strictly confidential.

Omni will not be held liable for any errors printed in the catalogue.

Sale dates and cancellations of auctions is solely at the discretion of Omni and its employees.

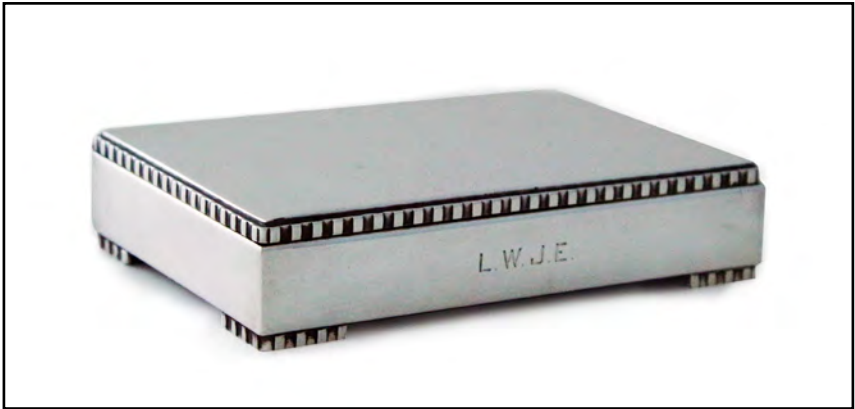
Items not collected within a month of the auction shall be re-auctioned in order to cover operational costs.

GENERAL TERMS OF BUSINESS

Omni will not be held liable for any personal injury or damage to property whilst on their premises. Right of admission reserved.

Imagery on the website is solely reserved for Omni operational use and may not be distributed or used for any other purposes.

The official business address is 9 Hemlock Street, Newlands, 7700. Omni, however, reserves the right to hold auctions at alternate locations.



16



41



51



49



66



72



111



118





135



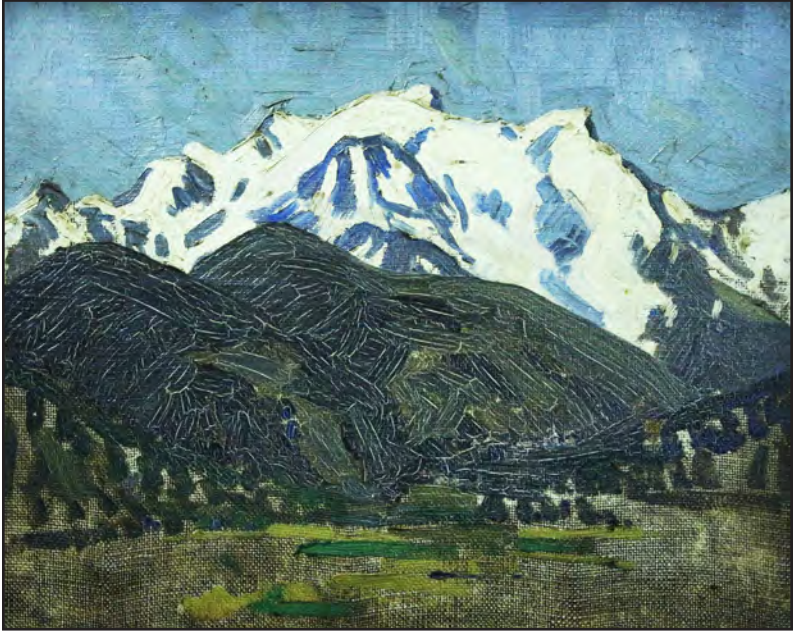
159



176







214



221



243



252



260



250