

SELECT AUCTION
CAPE TOWN | 19 DECEMBER 2017

SESSION ONE - 10.30AM

BOOKS, ART REFERENCE BOOKS AND PORTFOLIOS: Lots 1 - 68

PAINTINGS AND PRINTS: Lots 69 - 170

DECORATIVE ARTS AND COLLECTABLES: Lots 171 - 280

FURNITURE: Lots 281 - 400

CLOCKS : Lots 401 - 410

METALWARE : Lots 411 - 440

SILVER : Lots 441 - 470

JEWELLERY AND WATCHES : Lots 471 - 484



021 671 4497 | info@omni.co.za

9 Hemlock Street, Newlands

www.omni.co.za

SPECIALISTS AND SERVICES

WARREN SCHEUER

Managing Director
B.F.A (HON), P.D.J.M – RHODES
UNIVERSITY
warren@omni.co.za

SHONA ROBIE

Director | Office Manager |
Decorative Arts
B.A. (FA) – UNIVERSITY OF
CAPE TOWN
shona@omni.co.za

GARY SHEAN

Director | Fine Art
BBM – FBT COLLEGE
gary@omni.co.za

KAREN SHEAN

Silver | Jewellery Administrator
B.F.A – CAPE TOWN COLLEGE OF
FASHION DESIGN
karen@omni.co.za

NATHEMA VALLY

Graphic Design | Media
NHD: Graphic Design – CAPE
TECHNIKON
nathema@omni.co.za

ACCOUNTS

accounts@omni.co.za

BIDS OFFICE

bids@omni.co.za

ENQUIRIES

info@omni.co.za

VIEWING

Saturday 16 December: 10am – 5pm

Sunday 17 December: 10am – 5pm

Monday 18 December: 10am – 5pm

Buyer's Premium is calculated at 12% plus VAT at the prevailing rate for items selling over R10 000 and 15% plus VAT for items selling for R10 000 or less at the prevailing rate.

Please note that all lots are sold as is.

Payments and collections are to take place no later than Thursday 21 December.

BOOKS, ART REFERENCE
BOOKS AND PORTFOLIOS

1

Sachs, J
Irma Stern and the Spirit of
Africa
R400 - R600

2

Dubow, N
Irma Stern
R200 - R300

3

Lewis, A
Irma Stern: Journeys to the
Interior Unseen Works by Irma
Stern 1929 - 1939
R400 - R600

4

Cullen, P, Freemantle, B, Isaac, S,
Miles, E and Van Rensburg, W
Irma Stern: Expressions of a
Journey
R500 - R700

5

Timmins, H
Tretchikoff
signed by the artist, this De Luxe
edition specially published for
South African is limited to 400
copies, signed by the artist, of
which this is no 15
R4 000 - R6 000

6

Kentridge, W
A focus on William Kentridge,
Black Box, and Ubu and the
Truth Commission (3)
including the Bonhams Catalogue:
A focus on William Kentridge sale,
signed by the artist in red crayon
R5 000 - R7 000

7

Cameron, D, Christov-Bakargiev,
G, and Coetzee, J.M
William Kentridge
R400 - R600

8

Miles, E
The World of Jean Welz
R250 - R300

9

Bekker, M
The Art of Alexander Rose-
Innes
R300 - R500

10

Johannesburg Art Gallery
Sekoto
R300 - R400

11

Schoonraad, M
Walter Battiss
R200 - R300

12

Holloway, V
Cecil Higgs
R200 - R300

13

Harmsen, F

Maud Sumner: Painter and Poet

R8 000 - R12 000

14

Strydom, M

Francois Krige

R200 - R300

15

Maskew, M

A Portrait of Uys Krige

R180 - R240

16

du P Scholtz, J

Katrine Harries: Life and Work

R200 - R300

17

Davis-Mesman, E

Alfred Krenz

R200 - R300

18

Bester, R

Ephraim Ngatane: A Setting Apart

R400 - R500

19

Nilant, F E G

Pierneef: Linosnee

R1 800 - R2 400

20

Scholtz, J du P

Moses Kottler: His Cape Years

R400 - R600

21

Crump, A & Villa, E

Sculpture by Edoardo Villa 1985
to 1987 (Johannesburg Art Gallery
June 9 to July 12th, 1987)

R300 - R400

22

Ullmann, E

Ernest Ullmann: Designs on Life

R280 - R340

23

Miles, E Nomfanekiso

Who Paints at Night: The Art of
Gladys Mgudlandlu

R250 - R300

24

Skotnes, C

The Assassination of Shaka

R600 - R800

25

Ogilvie, G

The Dictionary of South African
Painters and Sculptors

R600 - R800

26

Berman, E

Art & Artists of South Africa

R300 - R400

27

Berman, E

The Story of South African
Paintings

R300 - R400

- 28
Alexander, L & Cohen, E
150 South African Paintings: Past
and Present
R180 - R220
- 29
Stevenson, M
Art & Aspirations: The Randlords
of South Africa and Their
Collections
R200 - R300
- 30
Institute for Contemporary Art
A Directory of South African
Contemporary Art
R200 - R300
- 31
De Jager, E. J
Contemporary African Art in South
Africa
R150 - R200
- 32
Young, G
Art of the South African
Townships
R200 - R300
- 33
Cruise, W
Contemporary Ceramics in South
Africa
R200 - R300
- 34
Hatfield, D
District Six
R200 - R300
- 35
Du Plessis, I. D
The Cape Malays: History,
Religion, Traditions, Folk Tales
R200 - R300
- 36
Bradlow, F
The Early Cape Muslims: A study
of Their Mosques, Genealogy and
Origins
R500 - R700
- 37
Du Plessis, I.D, & Luckhoff, C.A
The Malay Quarter and Its People
R300 - R400
- 38
Hymen Picard, W JGrand Parade:
The Birth of Greater Cape Town
R180 - R240
- 39
Grogan, T
Vanishing Villages, Vanishing
Cape Town, and Settlers Country (3)
R500 - R700
- 40
Laurence, Marting, Marily (eds)
Madeline
Picasso and Africa
R300 - R400
- 41
Bouvet, F
Bonnard: The Complete Graphic
Works
R100 - R150

- 42
 Courthion, P
 Georges Roualut including a
 catalogue of works prepared with
 the collaboration of Isabelel
 Rouault
 R250 - R300
- 43
 White, C
 Rembrandt as an Etcher (2)
 R100 - R150
- 44
 Hans L C Jaffe
 Pablo Picasso
 R180 - R240
- 45
 Louie, A (Translated by Jean
 Stewart)
 Henri Matisse: A Novel (2 Vols)
 R1 000 - R1 200
- 46
 Busignani, A
 Marini
 R350 - R400
- 47
 Zwemmer, A
 Henry Moore (2 Vols)
 R150 - R200
- 48
 Swinton, G
 Sculpture of the Eskimo
 R100 - R150
- 49
 Konig, E
 Masters of Italian Art: Caravaggio
 R150 - R200
- 50
 Matter, M
 Alberto Giacometti: Painters and
 Sculptures, and Giacometti (2)
 R400 - R600
- 51
 Pickford, I
 Jackson's Hallmarks, and Guide to
 Gold Marks (2)
 R200 - R300
- 52
 Burton, A. W
 The Highlands of Kaffraria
 R300 - R400
- 53
 Viney, G
 Colonial Houses of South Africa,
 Groote Schuur, and Johannesburg
 Style (3)
 R400 - R600
- 54
 Faber, E & Unger, S
 American Wristwatches: Five
 Decades of Style and Design,
 Wristwatches, and Wristwatches (3)
 R220 - R260
- 55
 Raulet, S
 Jewelry of the 1940's and 1950's
 R500 - R700
- 56
 Tillbrook, A. J
 The Designs of Archibald Knox for
 Liberty & Co, The Liberty Style,
 and The Designs of Archibald
 Knows for Libery & Co (3)
 R500 - R700

57

Parry, L

William Morris, and Lucie Rie &

Aans Coper (2)

R300 - R400

58

Bosch, A

Esias Bosch

R500 - R700

59

Drucker, J

Georg Jensen: A Tradition of

Splendid Silver

R200 - R300

60

Garner, P

Twentieth-Century Furniture

R150 - R200

61

Arwas, V

Art Deco

R120 - R180

62

Knowles, E

100 Years of the Decorative Art:

Victoriana, Arts & Crafts, Art

Nouveau & Art Deco

R120 - R180

63

Curtis, L J

Lloyd Loom: Woven Fiber

Furniture

R200 - R300

PORTFOLIOS

64

Guevara, M

Six Works

The Erotic Society, London, A

facsimilie print, no 139 of 500

copies, black boards with THE

EROTIC PRINT SOCIETY label.

R1 000 - R2 000

65

Anonymous

Initiation Amoureuse

The Erotic Society, London, a

limited deluxe edition, published

by the Erotic Print Society

reproducing the privately

published 1943 set of illustrations

by Suzanne Ballivet for Initiation

Amoureuse, no 354 of 2500 copies,

25 loose illustrations, original

slip case, with THE EROTIC PRINT

SOCIETY label

R1 000 - R2 000

66

Rowlandson, T

Twelve Works

The Erotic Society, London, this

the Deluxe edition, available on ly

subscription, is printed on 300gsm

Canaletto paper and is limited to

2500 copies of which this is no

129, with THE EROTIC PRINT SOCIETY

label

R1 000 - R2 000

67

Beardsley, A
Drawings for The Lysistrata of
Aristophanes
The Erotic Society, London, 1994,
first edition thus taken from the
1896, large yellow card folder
with printed onset to cover with
Beardsley illustrations and title,
no 68 of 2500 copies on Waterford
paper, 11 pp text, 8 plates, with THE
EROTIC PRINT SOCIETY label
R1 000 - R2 000

68

Printaniere, I
Paris Spring
The Erotic Society, London, An
exact facsimile of the privately
printed 1933 edition, attributed
to Fedor Rojankowski, printed on
125g archival paper and available
only by subscription, grey paper-
overs folder with grey cloth spine
housing 30 loose-leaved, mounted
prints of watercolours, boards
tied with satin ribbon, original
charcoal paper slip cover with THE
EROTIC PRINT SOCIETY, label
R1 000 - R2 000

PAINTINGS AND PRINTS

69

Johnny Friedlaender
(Polish 1912 - 1992)
Abstract
lithograph printed in colours,
signed and numbered 63/95 in
pencil in the margin
sheet size: 62 by 48cm
R1 500 - R2 000

70

Hilde Schaap
(Continental 20th Century)
Icuras
signed and dated 2012
mixed media on canvas
120 by 59cm
R1 500 - R2 000

71

Alfio Rapisardi
(Italian 1929 -)
Two Sleeping Figures
signed
oil on board
28 by 48cm
R2 500 - R3 000

72

Nelson Mandela
(South Africa 1918 - 2013)
The Struggle Series
The hand written motivation by
Nelson Mandela has been signed
by the artist and is accompanied
by 5 images drawn by him in July
2001, the edition is limited to: 950
cream lithographs, of which this is
number 349/950 printed on 310gsm
Incisioni Board
sheet size: 21 by 14cm
R25 000 - R30 000

73

Anton Smit
(South African 1954 -)
De Beer Speed
signed, dated 2007 and numbered
8/24 GRP
60 by 25 by 25cm
R25 000 - R35 000

74

Anton Smit

(South African 1954 -)

Origin

signed, dated 89 and numbered
23/24

GRP

30 by 70 by 25cm

R35 000 - R45 000

75

Riaan Malan

(South African 20th Century)

Tank

signed

metal

height: 35cm

R10 000 - R15 000

76

Hannes Harrs

(South African 1927 - 2006)

African Shield

woodcut, signed and numbered 5/23
in pencil in the margin

sheet size: 73 by 65cm

R1 500 - R2 000

77

Hannes Harrs

(South African 1927 - 2006)

Abstract with Red

woodcut, signed, dated 1974 and
numbered 13/55 in pencil in the
margin

70 by 55cm

R1 000 - R1 500

78

Hannes Harrs

(South African 1927 - 2006)

Shield

woodcut, signed, dated 73, numbered
II/IV and inscribed "A.P" in pencil
in the margin

sheet size: 70 by 55cm

R1 500 - R2 000

79

Helmut Starcke

(South African 1935 -)

Butterflies

lithograph printed in colours,
signed, dated and inscribed "A.P" in
pencil in the margin

sheet size: 55 by 75cm

R2 000 - R3 000

80

Kenneth Baker

(South African 1931 - 1995)

Mothers and Children

signed

oil on board

39 by 47cm

R7 000 - R9 000

81

Kenneth Baker

(South African 1931 - 1995)

The Conversation

signed and dated "70

oil on board

44 by 34,5cm

R5 000 - R7 000

82

Kenneth Baker
(South African 1931 - 1995)
The Social Gathering
signed
oil on board
55 by 44,5cm
R5 000 - R7 000

83

Kenneth Baker
(South African 1931 - 1995)
The Lovers
signed
oil on board
39 by 47cm
R5 000 - R7 000

84

Azaria mbatha
(South African 1941 -)
Figure and Snake
woodcut, signed and numbered
30/100 in pencil in the margin
sheet size: 42 by 35cm
R1 000 - R1 500

85

Azaria mbatha
(South African 1941 -)
Figures
woodcut, signed and numbered
45/100 in pencil in the margin
sheet size: 36 by 41cm
R1 500 - R2 000

86

Ben Macala
(South African 1938 - 1997)
The Musician
signed
oil on paper
88 by 57,5cm
R3 000 - R5 000

87

Ben Macala
(South African 1938 - 1997)
Figure Astride a Horse
signed
charcoal and pastel on paper
96 by 60cm
R1 500 - R2 000

88

Lucky Sibiyi
(South African 1942 - 1999)
Warriors
signed, dated 1979 and numbered
52/85 in pencil in the margin
sheet size: 80 by 63cm
R1 500 - R2 000

89

Lucky Sibiyi
(South African 1942 - 1999)
Figures
signed, dated 1979 and numbered
245/250 in pencil in the margin
sheet size: 80 by 60cm
R1 500 - R2 000

90

Lucky Sibiyi
(South African 1942 - 1999)
Mother Africa
silkscreen printed in colours,
signed and numbered 38/85 in
pencil in the margin
sheet size: 80 by 60cm
R1500 - R2 000

91

Peter Clarke

(South Africa 1929 - 2014)

Pypies

linocut with watercolour, signed,

inscribed with the title and "A.P"

in pencil in the margin

sheet size: 10 by 10cm

R3 000 - R5 000

92

Gregoire Boonzaier

(South African 1906 - 1977)

Figure on a Donkey Cart

woodcut with handcolouring,

signed and dated 1978

sheet size: 35 by 25cm

R2 000 - R3 000

93

Eleanor Esmonde-White

(South African 1914 - 2007)

Women Talking

etching, signed, numbered 13/25

and inscribed with the title in

pencil in the margin

sheet size: 17 by 11cm

R1 000 - R1 500

94

Sue Lewington

(British 1956 -)

Dragon Rug, and Animal Rug (2)

etching printed in colours, signed

and numbered 6/300 and 20/300 in

pencil in the margin

sheet size: 17 by 15cm

R400 - R600

95

Nerine Desmond

(South Africa 1908 - 1983)

Basuto Riders

signed

watercolour on paper

33 by 47cm

R1 500 - R2 000

96

Ben Macala

(South African 1938 - 1997)

Two Figures

signed and dated 78

mixed media on paper

95 by 55cm

R1 500 - R2 000

97

Ben Macala

(South African 1938 - 1997)

The Gaze

signed

mixed media on paper

95 by 55cm

R1 500 - R2 000

98

Frans Claerhout

(South African 1919 - 2006)

Two Figures Working

signed

mixed media on paper

25 by 18cm

R2 000 - R3 000

99

Billy Molokeng

(South African 1949 -)

Africa

signed and dated 1992

mixed media on paper

80 by 115cm

R2 800 - R3 800

100

Christo Goetzee
(South African 1929 - 2000)
Zimbabwe Sunset
signed, dated 69 and inscribed with
the title and "The City 69" on the
reverse
mixed media on board
16 by 31cm
R5 000 - R7 000

101

Andrew Verster
(South African 1937 -)
Homage to Seferis
ten poems by George Seferis 1900 -
1971, a portfolio of ten silkscreens
with ten poems by George Seferis,
1987, printed by Malcolm Christia,
published by Caversaham Press,
November 1987, printed in colours,
edition limited to 100, this set
numbered 85, each silkscreen
signed, dated 87, numberd and
inscribed with the title in pencil
in the margin
sheet size: 58 by 41,5cm
R7 000 - R9 000

102

Andrew Verster
(South African 1937 -)
Indistinctly titled
lithograph, signed, dated 76,
numbered 7/10 and inscribed with
the title in pencil in the margin
63 by 50cm
R1 500 - R2 000

103

Kibwanga Mwenze
(Congolese 1925 - 1999)
Antelopes
signed
oil on board
62 by 82cm
R16 000 - R18 000

104

Gladys Mgudlandlu
(South African 1925 - 1979)
Flowers
signed and indistinctly dated
gouache on paper
55 by 70cm
R15 000 - R20 000

105

Donald Nxumalo
(South African 20th Century)
Cape-Parrot, and Bokmakerie (2)
signed, dated 1992 and inscribed
with the title
mixed media on paper
19 by 17cm
R500 - R700

106

Jackson Nkumanda
(South African 1948 -)
Phones
signed and dated 97
mixed media and collage relief on
masonite
75 by 100cm
R3 000 - R5 000

- 107
 Godfrey Ndaba
 (South African 1947 -)
 The Smoker
 signed and dated 84
 mixed media on paper
 36 by 24cm
 R1 000 - R1 500
- 108
 Jan Buys
 (South African 1909 - 1985)
 Cottages
 signed
 oil on board
 30 by 55cm
 R3 000 - R5 000
- 109
 Jan Buys
 (South African 1909 - 1985)
 Extensive Landscape
 signed
 oil on board
 54 by 74cm
 R3 000 - R5 000
- 110
 Chris Tugwell
 (South African 1938 -)
 Bluegums
 signed
 oil on board
 60 by 45cm
 R5 000 - R7 000
- 111
 Frieda Lock
 (South African 1902 - 1962)
 Landscape with Trees
 authenticated on the reverse by Joe
 Wolpe
 38 by 27cm
 R40 000 - R60 000
- 112
 Gordon Vorster
 (South African 1924 - 1988)
 Landscape with Buffalo
 signed
 watercolour on paper
 48 by 66cm
 R6 000 - R8 000
- 113
 Jeanette Hablutzel
 (South African 20th Century)
 Landscape
 signed
 watercolour on paper
 35 by 52cm
 R2 000 - R3 000
- 114
 Johannes du Plessis
 (South African 20th Century)
 Lion
 signed and dated 91
 oil on canvas
 89 by 140cm
 R20 000 - R25 000
- 115
 Johannes du Plessis
 (South African 20th Century)
 Leopard
 signed and dated 91
 oil on canvas
 89 by 140cm
 R20 000 - R25 000
- 116
 Servera Rech Cassarino
 (South African 1950 -)
 Abstract Imagination
 signed
 mixed media on paper
 71 by 100cm
 R5 000 - R7 000

117

Linda Van Someren
(South African 20th Century)
Black Cranes
signed
watercolour on paper
36 by 28cm
R2 000 - R3 000

118

Servera Rech Cassarino
(South African 1950 -)
Butterflies
signed
watercolour on paper
28 by 26cm
R2 000 - R3 000

119

Brian Wiles
(South African 1923 - 1993)
A View of the Ocean, Fish Hoek
signed
oil on board
61 by 91cm
R2 000 - R3 000

120

Gerhard Wagner
(South African 20th Century)
Seascape
signed and dated '66
oil on canvas
73 by 120cm
R1 000 - R1 500

121

Pierre Volschenk
(South African 1926 -)
Arniston, Cottages
signed
oil on board
50 by 78cm
R2 000 - R3 000

122

Wessel Marias
(South African 1935 - 2009)
Cape Cottage
signed
oil on board
48,5 by 74cm
R4 000 - R6 000

123

Peter Jander
(South African 1954 -)
Groot Constantia
signed and inscribed with the title
on the reverse
oil on board
28,5 by 38,5cm
R2 000 - R3 000

124

Wessel Marias
(South African 1935 - 2009)
Still Life with Flowers
signed
oil on board
42 by 58cm
R4000 - R6 000

125

Barbara Burry
(South African 1909 - 2010)
Still Life
signed
oil on board
36 by 16cm
R3 000 - R5 000

126

Kobus Kotze
(South African 1938 -)
Cottages Nestled Amongst Trees
signed
oil on board
34 by 43cm
R2 000 - R3 000

127
Jacque Du Plessis
(South African 1985 -)
Cottages Along The River Bank
signed
oil on board
33 by 43cm
R1 500 - R2 000

128
Michael Albertyn
(South African 1938 -)
Cottage in an Extensive Landscape
signed
oil on board
60 by 90cm
R4 000 - R6 000

129
Roland Pymm
(20th Century)
A View of Table Bay from Kloof Neck
unsigned
oil on canvas
55 by 83cm
R5 000 - R7 000

130
Dale Elliott
(South African 1946 -)
Cape Mountain Range
signed
oil on board
44 by 59cm
R5 000 - R7 000

131
Dale Elliott
(South African 1946 -)
Figures in Conversation
signed
oil on board
43,5 by 58,5cm
R4 000 - R6 000

132
Gino Fasciotti
(South African 1883 - 1961)
A View of a Cape Dutch Cottage
signed
oil on canvas
34 by 44cm
R3 000 - R5 000

133
Gino Fasciotti
(South African 1883 - 1961)
Cottages at the End of the Road
signed
oil on board
33 by 47cm
R3 000 - R5 000

134
Arabella Caccia
(South African *)
Baobab Trilogy I, II and III (3)
signed
oil on finish board
120 by 160cm
R15 000 - R20 000

135
Olivia Scholnick
(South African 1927 - 2015)
Red Landscape
signed
oil on canvas
60 by 75cm
R1 500 - R2 000

136
Norman Catherine
(South African 1940 -)
Self Portrait
signed and dated 1975
ink on paper
70 by 50cm
R10 000 - R15 000

137

Simon Jones
(South African 1951 -)
Sea Point, Cape Town
signed and dated '89
acrylic on board
90 by 60cm
R14 000 - R18 000

138

David Kuijers
(South African 1962 -)
Table Bay
signed
acrylic on canvas
50 by 50cm
R2 000 - R3 000

139

Jack Lugg
(South African 1924 - 2013)
Abstract Figures
signed and dated 89
oil on board
68 by 51cm
R5 000 - R7 000

140

Jack Lugg
(South African 1924 - 2013)
Abstract
signed and dated 84
oil on board
68 by 51cm
R5 000 - R7 000

141

Joe Kotze
(South African 20th Century)
A View of Cottages Through a Clump
of Trees
signed
oil on board
29 by 59cm
R1 000 - R1 500

142

Duggie du Toit
(South African 1943 -)
Still Life with Mandolin
signed
oil on board
57 by 87cm
R4 000 - R6 000

143

Duggie du Toit
(South African 1943 -)
Still Life
signed
oil on board
57 by 87cm
R4 000 - R6 000

144

David Botha
(South African 1921 - 1995)
Still Life
inscribed with the title on the
reverse
oil on board
22,5 by 18,5cm
R8 000 - R12 000

145

Herbert Coetzee
(South African 1921 - 2008)
Still Life with a Jug
signed
oil on board
18 by 21cm
R3 000 - R5 000

146
Pranus Domsaitis
(South African 1880 - 1965)
Still Life with a Jug (Recto),
Still Life (Verso)
signed
oil on board
58 by 48cm
R25 000 - R30 000

147
Herman van Nazareth
(South African 1936 -)
Still Life
oil on board
59 by 49cm
R15 000 - R20 000

148
Pierre Volschenk
(South African 1926 -)
Still Life with Flowers
signed
oil on board
53 by 28cm
R1 500 - R2 000

149
David Botha
(South African 1921 - 1995)
Liberty
signed
ink on paper
38 by 56cm
R4 000 - R6 000

150
David Botha
(South African 1921 - 1995)
Arniston, Cottages
signed and dated 73
ink on paper
38 by 56cm
R4 000 - R6 000

151
Roland Pymm
(20th Century)
Cottage in the Shadow of a
Mountain
signed
oil on canvas
55 by 83cm
R2 000 - R3 000

152
Nerine Desmond
(South Africa 1908 - 1983)
Cock
signed and dated 1965
mixed media on paper
54 by 36cm
R4 000 - R6 000

153
Nerine Desmond
(South Africa 1908 - 1983)
Market Scene
signed
watercolour on paper
30 by 37cm
R2 000 - R3 000

154
Constance Penstone
(South African 1865 - 1928)
Lighthouse
signed
watercolour on paper
19 by 30,5cm
R2 000 - R3 000

155
Johan Engela
(South Africa 1915 -)
Portrait of a Boy
signed
mixed media on paper
37 by 26,5cm
R1 000 - R1 500

156

Johan Engela
(South Africa 1915 -)
Cape Town Harbour
signed
oil on board
42 by 51,5cm
R2 500 - R3 500

157

Harold Mettler
(South African 1953 -)
District Six
signed
oil on board
35 by 50cm
R1 000 - R1 500

158

Sydney Taylor
(South Africa 1870 - 1952)
Cape Cottages
signed
oil on board
37 by 43cm
R3 000 - R5 000

159

South African School
(20th Century)
Figures on a Donkey Cart
signed
oil on board
23 by 33cm
R1 000 - R1 500

160

Vera Volschenk
(South African 1899 - 1987)
Landscape
signed, dated 1953, signed and
inscribed with the artist name,
title and date on the reverse
oil on canvas
30 by 45cm
R2 000 - R3 000

161

Don Benzien
(South African 20th Century)
Landscape with Cottages
signed
oil on board
60 by 92cm
R2 000 - R3 000

162

Steven Raphaley
(South African 1943 -)
Still Life
signed
oil on board
76 by 60cm
R10000 - R15000
Produced by the artist during
his early art lessons with Cecil
Skotnes, Steven painted this
particular work while Cecil
watched during a one on one art
lesson. Cecil was so impressed with
this work, that he took a brush and
paint and proceeded to "upgrade"
the work. Upon finishing the work,
Cecil signed it and instructed
Steven to keep it as one day, it
would be valuable. A relationship
between student and mentor was
formed and many further art
lessons were had.

163

Arthur Ellis
(South African 20th Century)
Graaff Reinet, and Figures (2)
signed
mixed media on paper
30 by 22cm
R3 000 – R5 000

164

George French Angus
(South African 1822 – 1886)
Baviaans Kloof, on the Umnonoti
River, Natal, and Our Doctor,
Burning to Distinguish Himself
Goeth out Kaffer Stalking (3)
lithographs printed in colours
sheet size: 26 by 37 (the largest)
R2 000 – R4 000

165

Edmund Blair Leighton
(British 1852 – 1922)
Rowing
signed and dated '94
watercolour with heightening
40 by 65cm
R 4 000 – R6 000

NO LOTS 166 – 170

DECORATIVE ARTS

171

A Pair of Large Royal Doulton
Shakespeare Seriesware Oval
Plaques, 20th Century
one depicting and titled Wolsey,
the other Katherine, printed
factory mark, framed
41cm wide (2)
R4 000 – R6 000

172

A Foley Coronation of King
Edward VII and Queen Alexandra
Commemorative Bowl, 20th Century
wavy rim, printed factory mark,
10cm diameter; A Sevres-style
Metal-mounted Heart Shaped
Trinket Box, 20th Century, printed
with a courting couple, pseudo
factory mark; A Royal Worcester
Metal-mounted Egg Coddler, 20th
Century, printed with fruit,
printed factory mark; and A Limoges
Bisque Oval Trinket Box and Cover,
20th Century, the cover painted
with a floral spray, printed
factory mark
the bowl 10cm diameter (4)
R600 – R800

173

A Shelley Rock Garden Pattern
Chintz Tea Service, 1940–1966
comprising: 11 cups and 10 saucers,
11 plates, 2 milk jugs, 2 sugar bowls
and 2 two-handled cake plates,
printed factory and pattern mark
the cake plate 24,5cm wide over
handles (38)
R1 200 – R1 500

174

A Group of Three Moorcroft Vases,
20th Century
comprising: a Pomegranate trumpet
vase, a small Pomegranate trumpet
vase and a small Hibiscus globular
vase with everted neck, hairline
crack, chip, impressed factory
mark, paper label and painted
signature
the larger trumpet vase 21cm high
(3)
R3 000 – R4 000

175

A Royal Worcester Tea Service, 1949
each printed with a band
of dandelions in gilt and
puce against a cream ground,
comprising: 8 cups and 8 saucers,
8 side plates, 2 cake plates, a
milk jug and a sugar bowl, printed
factory mark
the cake plate 23cm diameter (28)
R1 500 - R2 000

176

A Clarice Cliff Brookfields Pattern
Vase, 1935
the tall ribbed tapering body
with spreading foot, painted with
a cottage amongst stylised trees
beneath fine blue and yellow
banding, restoration, printed
factory mark, moulded shape
number
47cm high
R6 000 - R8 000

177

An Italian Majolica Wall Clock
the raised central circular
dial painted with Grotosques,
a Bacchanalian mask and Roman
numerals, an aperture below with
pendulum, surmounted by a maiden
mask flanked by cherubs, the sides
with scantily clad maidens, a
Bacchanalian mask below flanked by
scrolling foliage, painted factory
mark, with key
45cm high
R4 000 - R6 000

178

A Group of Seven Ludwigsburg
Wares, Late 19th Century
comprising: a coffee pot, 2 cups
and 2 saucers and a circular box
and cover, each rim with a moulded
band, decorated with figures
before a landscape, and a coffee pot
painted in puce with floral sprays,
chips, printed factory mark; and A
Herend Peach-shaped Box and Cover,
20th Century, painted with birds
and butterflies, printed factory
mark
the coffee pot 25cm high (8)
R3 000 - R4 000

179

A Pair of Höchst Two-handled
Dressing Boxes and Covers, Early
20th Century
circular, each painted with floral
sprays, gilt highlights, printed
factory mark
11cm diameter (2)
R600 - R800

180

A Pair of Sitzendorf Figurines,
Late 19th Century
modelled as a country maiden and
her companion standing beside a
tree stump, chips, restoration,
painted factory mark
the taller 19cm high (2)
R1 500 - R2 000

181

A Pair of Dresden Figural Sweetmeat Dishes, Late 19th Century restoration, chips, printed factory mark, 17cm wide; A Derby-style Figure of a Putto, Late 19th Century, standing, holding a flower-filled basket, chips, repair, 12cm high; and A Pair of Staffordshire Figurines, Late 19th Century, each figure astride a zebra, rivet repairs, chips, hairline crack
the taller 16,5cm high (5)
R1 500 - R2 000

182

A Large Meissen-style Figural Group, Late 19th Century depicting courting couples seated around a lavish table, chips, restorations, painted factory mark 20,5cm high
R1 000 - R1 500

183

A Group of Three Meissen Floral Pattern Wares, Late 19th and 20th Century
each painted with floral sprays, gilt highlights, comprising: a reticulated plate, a tapering cylindrical vase and a circular box and cover, printed crossed swords mark; and A Meissen Metal-mounted Blue and White Scent Bottle, 19th Century, of square section, one side painted with Meissen crossed sword factory mark, metal screw top
the plate 24cm diameter (4)
R4 000 - R6 000

184

A Meissen Figure of a Goat, Early 20th Century modelled by Erich Hosel, depicting a kid goat standing above a broken Blue Onion plate with spilled milk, repair, impressed 50, incised V107, crossed swords mark; A Meissen Yellow-ground Candlestick, Late 19th Century, painted with floral scroll panels, repair, crossed swords mark; A Set of Four Meissen Demitasse Cups and Saucers, 20th Century, variously coloured, with raised acanthus leaf decoration, crossed swords mark; and A Small Limoge Gilt-metal Perfume Casket, Early 20th Century, painted with floral sprays, the hinged cover opening to reveal three metal-mounted blue glass bottles, painted factory mark
the goat 13,5cm high (11)
R6 000 - R8 000

185

A Group of Eight Meissen Opulent Court Dragon Pattern Wares, 20th Century
comprising: 6 red butter dishes, a puce leaf-shaped single handled dish and a red shaped oval dish, crossed swords mark; Two Meissen Ming Dragon Wares, 20th Century, comprising: a green shaped oval dish and a black part posy vase, crossed swords mark; and Two Meissen Green Indian Pattern Wares, 20th Century, comprising: a two-handled oval tray and a pedestal vase, crossed swords mark
the tray 41,5cm wide over handles (12)
R6 500 - R7 500

186

A Set of Six Meissen Opulent Court Dragon Pattern Trios, 20th Century variously coloured, one plate associated, crossed swords mark the plate 18cm diameter (18)
R3 000 - R4 000

187

A Group of Three Continental Trios, 20th Century each later painted with butterflies and insects, gilt rim, cancelled factory marks, signed; and Five Continental Tablewares, 20th Century, similarly later decorated, comprising: 2 saucers, 2 plates and a cup, cancelled factory marks, signed
the plate 20cm diameter (14)
R2 000 - R3 000

188

A French Bisque Corpus Christi, Early 20th Century mounted on a wooden crucifix applied with a bisque INRI plaque 39cm high
R1 000 - R1 500

189

An Austrian Earthenware Model of a Pug, Early 20th Century modelled seated and smoking a pipe, wearing a puce jacket with floral panels and gilt floral sprays, gilt collar and grey hat, with glass eyes, one eye and pipe lacking, repair
39cm high
R1 000 - R1 500

190

A Hutschenreuther Gilt and White Patrizia Pattern Part Dinner Service, 20th Century comprising: 6 dinner plates, 12 fish plates, 6 side plates, 2 square bowls, a soup tureen and cover, an oval platter and a gravy boat with fixed stand, printed factory mark, the platter 37cm wide; and A Hutschenreuther Gilt and White Part Tea Service, 20th Century, comprising: 6 cups and 6 saucers, 3 cake plates, a teapot and a milk jug, repair, printed factory mark the plate 20,5cm diameter (40)
R8 000 - R10 000

191

A Nymphenburg Blue and White Part Coffee Service, 20th Century each spiral fluted body painted with butterflies amongst floral sprays, comprising: 10 cups and 10 saucers, 11 plates, a coffee pot, a sugar bowl and cover and a milk jug, printed factory mark the plate 19cm diameter (34)
R2 500 - R3 500

192

A Rosenthal Grey and White Tea Service, 20th Century each printed with grey floral sprays, comprising: 6 cups and 7 saucers, 6 plates, a teapot, a sugar bowl and cover and a milk jug, chip, printed factory mark the plate 17cm diameter (22)
R1 200 - R1 500

193

Two Wagner & Apel Figures of Polar Bears, 1970s

printed factory mark

the taller 23,5cm high (2)

R1 000 - R2 000

194

A Hutschenreuther Porcelain Model of Two Arctic Terns, 20th Century designed by Gunther Granget, one perched on rockwork, the other taking flight, inscribed G Granget, restoration, printed factory mark 36cm high

R800 - R1 000

195

A Lladro Figurine of a Girl Feeding a Goose, 20th Century

printed factory mark, incised numerals, 23cm high; and Three

Nao Lladro Figures of Geese, 20th Century, printed factory mark

the tallest 14,5cm high (4)

R600 - R800

196

Four Nao Lladro Figurines of Children with Dogs, 20th Century

printed factory mark

the tallest 25,5cm high (4)

R1 200 - R1 500

197

A Lladro Figurine of a Girl

Brushing Her Hair, 20th Century

printed factory mark, 21cm high;

Two Nao Lladro Figurines of Girls, 20th Century, painted factory mark,

the taller 16cm high; and A Zaphir

Lladro Figurine of Two Children Playing, printed factory mark 18cm

high (4)

R1 200 - R1 500

198

Two Lladro Figurines of Boys, 20th Century

one blowing a kiss, the other

seated on a tree stump, printed

factory mark, the taller 21,5cm

high; and Two Nao Lladro Figurines

of Girls, 20th Century, one in her

nightdress, the other asleep at a

desk, printed factory mark

the taller 25cm high (4)

R1 200 - R1 500

199

Three Nao Lladro Figurines of Children, 20th Century

one depicting a girl holding a

violin, another holding a cello

and a sleepy by carrying his teddy,

printed factory mark

the tallest 19,5cm high (3)

R900 - R1 200

200

Three Lladro Figurines, 20th Century

one depicting a maiden seated

beside a tree stump and dove,

another a young man seated on a

tree stump with a dog by his feet

and a young sailor holding a ship

model, printed factory mark, the

tallest 28cm high; and A Rex Lladro

Figurine of a Milkmaid, 20th

Century, printed factory mark

27,5cm high (4)

R1 200 - R1 500

201

A Linnware Bowl, 1940s

the squat circular body with

inverted rim, overall mottled

green and russet glaze

30cm diameter

R700 - R900

202

A Pair of Chinese Tang-style Pottery Figures of Prancing Steeds each with one hoof raised, the back fitted with a saddle and accoutrements, on a shaped rectangular base, traces of pigment remaining, repairs the taller 28,5cm high (2)
R3 000 - R4 000

203

A Chinese Han-style Grey Pottery Square Section Hu Vase the bulbous body with spreading neck, raised on a splayed quadrangular base, traces of archaic scrolls and bands in red, white and blue pigment, cracks 35,5cm high
R1 000 - R1 500

204

A Chinese Tang-style Pottery Figure of an Ox and Cart the ox facing forward, the cart with a curving roof and rectangular walled frame supported on two wheels, shaped base, traces of pigment remaining, chips 43cm wide
R2 000 - R3 000

205

A Chinese Famille Rose Two-handled Tureen and Cover, Qianlong circular, painted with floral sprays within blue borders, ribbed semi-circular handles, knob finial, gilt highlights, wear, rivet repair, chips; Four Chinese Famille Rose Wares, Qianlong, variously decorated, comprising: 2 plates and a soup plate, chips; and A Staffordshire Chinoiserie 'Imari' Soup Plate, repair the tureen 21cm wide over handles (5)
R1 000 - R1 500

206

A Chinese Blue and White Tulip Vase, Late 19th Century painted with warriors and horsemen within a landscape, restoration; and Two Chinese Blue and White Moonflasks, Late 19th Century, in sizes, one painted with figures, the other with a landscape, restoration, chip, one with script mark the largest 25cm high (3)
R2 000 - R3 000

207

A Group of Nine Chinese Blue and White Wares, 19th and 20th Century each variously decorated, comprising: a large baluster vase and cover, a globular vase, 2 small vases, a baluster vase and cover, a globular vase with everted rim, 2 miniature bottle vases and a bowl, restoration, chips the largest 30cm high (9)
R3 000 - R4 000

208

A Group of Six Chinese Blue and White Wares, 19th and 20th Century each variously decorated, comprising: a tapering ovoid vase, a double-gourd vase, a baluster vase, a two-handled vase, a small bottle vase and a small hexagonal baluster vase, chips, restoration the largest 36cm high (6)
R3 000 - R4 000

209

Two Chinese Kangxi-Style Blue and White Tea Bowls and Saucers each fluted body painted with riverscape enclosed with alternating panels; Four Chinese Blue and White Saucers, similarly decorated; and A Chinese Blue and White Tea Bowl, painted with figures and storks before reeds (9)
R1 000 - R1 500

210

A Chinese Yellow-glazed Model of a Rooster overall yellow glaze, matt brown-glazed crown, wattle and rocky base, restoration, chips 49cm high
R3 000 - R5 000

211

A Chinese Celadon-glazed Model of a Rooster overall with light celadon green glaze with incised markings, the bisque head with stippling and glazed beak, chip, base with script 37cm high
R3 000 - R5 000

212

A Chinese Blanc de Chine Seated Figure of Guanyin, 20th Century modelled holding a flywhisk in her right hand and a bottle in her left, seated on a lotus base set above tumultuous waves, restoration, the reverse with impressed marks 26cm high
R800 - R1 000

213

A Chinese Famille Rose Yellow Ground Bottle Vase, Early 20th Century decorated overall with phoenixes amongst scrolling peonies, script mark, restoration; A Pair of Chinese Green Ground Bowls, Early 20th Century, each with overall blossoming prunus branches in white and aubergine, hairline crack; Two Chinese Green-Glazed Stoneware Vessels, Late 19th Century, hairline crack; and An Earthenware Cloisonne Plate, Early 20th Century, decorated in shades of turquoise, green and orange with peony and chrysanthemum sprays the vase 21cm high (6)
R2 500 - R3 500

214

A Group of Four Chinese Canton Famille Rose Wares, 19th and 20th Century
each with alternating panels of figures at various pursuits and birds and butterflies amongst flowers reserved against a gilt ground with flowerheads and scrolling foliage, comprising: a charger, a pair of vases and a small moonflask, restoration, the charger printed MADE IN CHINA
the charger 48cm diameter (4)
R3 000 - R4 000

215

A Large Chinese Porcelain Auspicious Egg, 20th Century
painted with a band of pavilions within a snowy mountainous landscape and script between blue ground borders with lappet and scrolling foliate bands and floral sprays
73cm high
R900 - R1 200

216

A Japanese Imari Bowl, Meiji
painted with precious objects below a diaper border reserved with flowerhead panels, the interior with fish
19,5cm diameter
R1 000 - R1 500

217

A Group of Five Japanese Wares, Meiji
comprising: a pair of Kutani bottle vases, a Kutani plate, an Imari dish and an Imari bottle vase; and A Small Pair of Masons Ironstone Chinoiserie Pattern Condiment Jugs, Late 19th Century
the dish 25cm diameter (7)
R1 000 - R1 500

218

A Bohemian Gilt Painted Ruby Glass Inkstand, 19th Century
of shaped outline, painted overall with scrolling foliage, fitted with removable wafer canister and inkwells with Van Dyke rims, raised on four feet, wear to gilding
25cm wide
R5 000 - R7 000

219

A Group of Five Glass Paperweights including: a millefiori example and a signed David Reade red and clear glass example
the largest 10,5cm high (5)
R1 200 - R1 500

220

A FM Kostaglas Ronneby Glass Paperweight
clear glass with internal coloured floral inclusions, signed, numbered, original paper label
7,5cm high
R700 - R900

221

A Kosta Boda Pink Art Glass 'Open Minds' Vase by Ulrica Hydman-Vallien signed Ulrica HV/AH, engraved Kosta Boda Artist Coll Ulrica HV 48745, with original labels
35cm high
R1 500 - R2 000

222

A Kosta Boda Clear Art Glass 'Cat' Vase by Ulrica Hydman-Vallien signed Ulrica HV/BS, engraved Kosta Boda Artist Lu Ulrica HV 49828, with original labels
31,5cm high
R1 000 - R1 500

223

A Part Suite of Webb Crystal Heirloom Pattern Drinking Glasses comprising: 10 red, 12 white and 12 champagne coupes, acid etched factory mark (34)
R2 500 - R3 500

224

A Set of Bohemian Coloured Overlay Cut-glass Hock Glasses, 1950s each bowl of various colour, raised on a clear glass stem and foot (12)
R1 500 - R2 000

225

A Part Suite of Engraved Drinking Glasses each engraved with a crown and initials, knopped stem, comprising: 12 white and 8 red; A Group of Five Engraved Champagne Flutes, similarly engraved; and A Miscellaneous Collection of Drinking Glasses, comprising: 4 rummers, 7 hock, 10 red wine, and 14 brandy, in sizes (50)
R1 200 - R1 500

226

A Set of Four Engraved Glass Carafes and Stoppers each engraved with a crown and initials, one with stopper; An Engraved Glass Decanter and Associated Stopper, hairline crack; Two Decanters and Stoppers, one engraved with a commemorative logo, one stopper associated; and Three Cut Cranberry-glass Dishes, Late 19th Century
19cm diameter (10)
R1 500 - R2 000

227

Dampierre: A Lalique Frosted and Clear Glass Vase, Modern moulded with a band of birds alternating with vines, chip, engraved Lalique, France; and Love Birds: A Lalique Frosted and Clear Glass Ring Dish, Modern, engraved Lalique, France
10cm diameter (2)
R2 000 - R3 000

228

A Mat Jonasson Crystal Horse and Foal Sculpture, 1996
in the form of rockwork with engraved horse and reclining foal to the reverse, engraved signature and date, 20,5cm wide; A Kosta Boda Mottled Orange and Clear Bowl, signed, 12cm diameter; and Four Blue Glass Trumpet Drinking Glasses (6)
R1 800 - R2 400

229

A Vicke Lindstrand for Kosta Boda Iceberg Glass Sculpture, 1960s
chiselled in the form of a glacier with polar bears to the reverse, incised KOSTA V LINDSTRAND
20,5cm wide
R700 - R900

230

A Lindshammar Art Glass Dish by Gosta Sigvard, 1960s
of circular outline in orange, chip, signed
45,5cm diameter
R1 000 - R1 500

231

David Reade (1960-): A Mottled Black and Blue Art Glass Vase
ovoid, bubble inclusions, engraved signature
34,5cm high
R1 000 - R1 500

232

Four Chinese Carved Ivory Napkin Rings
NOT SUITABLE FOR EXPORT, various sizes, each with fluted rims and fine black highlighted banding; and Two Chinese Carved Bone Napkin Rings, one carved with a tiger, the other an elephant
the largest 5cm wide (6)
R1 000 - R1 500

233

A Chinese Cloisonné Model of a Rooster the feathers in turquoise, blue, yellow, red, green and white enamels, bronze comb, wattle, beak and feet, dents
40cm high
R5 000 - R7 000

234

A Chinese Patinated Bronze Figure of Guandi
the God of War seated on a throne, with amused expression below a furrowed brow, wearing a scholar's cap tied with a bow and a long robe partially covering the armour beneath, his right hand raised clasped to his long beard, losses
15cm high
R1 500 - R2 000

235

A Chinese Boxwood Figure of Guanyin
serene expression, wearing long robes and a cowl over her high chignon, standing on a lotus base and holding a willow branch in her left hand
30,5cm high
R1 000 - R2 000

236

A Chinese Wood Figure of Luxing the standing bearded figure wearing court official attire and holding a castanet with both hands, chip

24cm high

R1 500 - R2 500

237

A Chinese Lacquer Wood Figure of Shou Lao

wearing a flowing robe and straw hat, holding a staff in his right hand and a basket on his left, a child and crane by his side, on a pierced base, inlay lacking

27cm high

R2 000 - R3 000

238

A Group of Chinese Carved Wooden Stands

various shapes and sizes

the largest 30cm diameter (19)

R3 000 - R4 000

239

A Group of Four Small Chinese Coral Carvings

NOT SUITABLE FOR EXPORT

comprising: a figure of Guanyin, a figure of Shou Lao, a goldfish and a Buddha-mask pendant, the largest 5,5cm high; Two Small Chinese Ivory Carvings of Horses, the largest 3cm high; Two Small Chinese Jadeite Carvings of Goldfish, the largest 2,5cm wide; and a Small Chinese Bronze Figure of Guanyin Holding a Child

7cm high (9)

R2 500 - R3 500

240

A Group of Five Chinese Carved Wood Figures

comprising: Guanyin, Shou Lao with child, a fisherman and two figures seated beside baskets, losses, the largest 14,5cm high; and A Chinese Porcelain Inlaid Red Lacquered Three Tiered Storage Box, rectangular with fixed handle, each tier incised with lotus scrolls, the cover with blue and white double happiness plaque, wear

17,5cm high (6)

R2 000 - R3 000

241

A Pair of Japanese Wood Models of Recumbent Hares each with inlaid glass eyes, carved wood base, one eye lacking, restoration

18cm long (2)

R3 000 - R4 000

242

A Japanese Ando Cloisonne Copper Plate, 1960s

circular, enamelled in shades of green and gold with a stylised flowerhead, the reverse in black enamel, crack, 23,5cm diameter; and A Small Moorcroft Orange Lustre Glazed Bowl, Early 20th Century, impressed factory mark

8cm diameter (2)

R1 500 - R2 000

243

An African Carved Ivory Tusk
NOT SUITABLE FOR EXPORT, carved
in relief to one side with figures
fishing, animals and huts amongst
palm trees
63cm long
R4 000 - R5 000

244

A Set of Twelve Bone and Art Glass
Knife Rests
11cm long (12)
R300 - R400

245

A Pair of Indian Bronze Shrines of
Goddess Lakshmi
each elaborately jewelled and
standing before a scroll mandorla,
holding a lotus stem in her
right hand, on a lotus base and
rectangular moulded base, 23,5cm
high; and An Indian Bronze Figural
Oil Lamp, the standing deity
supporting a five-spouted oil
plaque, scroll handle, square foot
19cm high (3)
R600 - R800

246

A Balinese Bronze Double Naga
Dragon Three-light Pricket
Candelabrum
cast with two dragons with fierce
expressions, their intertwined
tails forming the central stem, on a
circular lappet base
44,5cm high
R800 - R1 000

247

A Balinese Carved Wood Bust of
Goddess Siwa, 20th Century
with serene expression, wearing
ornate collar and headdress
37cm high
R1 000 - R1 500

248

A Pair of Balinese Carved and
Stained Rosewood Figures of
Dancers
each standing in pose, wearing
ornate traditional costume and
a folk art hero mask, on a fluted
shaped base, chips
the taller 73cm high (2)
R4 000 - R6 000

COLLECTABLES

249

An Copper Engraved Map: Africa
Antiqua showing various tribal
regions, towns, mountains and
rivers, SBV - Schulbuecher-
Verschleiss-Administration, Adm
Kr-10. CM, bottom right CPSCRAM
- Cum Sacrae privilegio Caesareae
Regiaeque Apostolicae Maiestatis
33 by 46cm
R800 - R1 000

250

A Pair Boer War of Spectacles and Case, St Helena, Circa 1902
white metal framed spectacles,
fruitwood case carved H.C.
Flemming, KGV St HELENA 14-8-
1902; A Boer War Metal-mounted
Walnut Pipe Cleaner, Circa 1902;
and Three South African Air Force
WWII SAAF SALM Wares, 1923-1950,
comprising: a pewter cigarette
case, a Fruitwood cigarette case
and a pewter lighter
the spectacle case 18cm wide (5)
R2 500 - R3 500

251

Jules Moigniez (1835-1894): A Pair
of Patinated Bronze Models of
Pheasants
each realistically modelled,
perched on an oval base with
rockwork and foliage, signed
the taller 34cm high (2)
R12 000 - R15 000

252

A Deactivated Colt Frontier
Six-Shooter Double-Action Army
Revolver, Model 1878, 1878-1907
in original leather holster
R3 000 - R5 000

253

An Oak and Brass Postage Scale,
20th Century
rectangular base, with six brass
weights
21cm wide
R900 - R1 200

254

A German Electrola 101 Portable
Gramophone, 1925-1931
crank handle, faux maroon leather
case
41,5cm wide
R1 000 - R1 500

255

A Victorian Brass Figural Daniel
Lambert Inkwell, Late 19th Century
the obese English glutton seated on
the floor and eating a chicken, the
hinged head opening to reveal an
aperture, glass liner lacking
16cm wide
R900 - R1 200

256

A Silvered Pewter Napoleonic Seal
cast with a bust of Napoleon, brass
stamp with initials
8cm high
R800 - R1 000

257

A Set of Three French Gilt-metal
Mounted Bevelled Clear Glass
Footed Caskets, Late 19th Century
comprising: a pocket watch casket,
a rectangular ring casket with
scroll decoration and a square
jewellery casket, all with silk
lining, the jewellery casket 18cm
square; and Five Small Porcelain
Dolls (8)
R5 000 - R7 000

258

An Italian Pietra Dura Rose Panel,
Early 20th Century
rectangular, gilt frame
13cm high including frame
R600 - R900

259

An Austrian Cold Painted Bronze
and Hardstone Snake Charmer Desk
Tray, Early 20th Century
the seated figure holding a snake
in his right hand, another before
him, on a shaped oval base of ochre
tones, with circular well, wear,
evidence of cold paint, chips
16,5cm wide
R2 000 - R3 000

260

A Papier Mache Puppet of a Flemish
King, Possibly Belgium, Early 20th
Century, painted papier mache and
painted face, carved wooden hands
and feet, in 17th century attire
85cm high
R1 500 - R2 000

261

A French Gilt-metal Mounted
Engraved and Bevelled Clear Glass
Footed Casket, Late 19th Century
rectangular, the interior of glass
engraved with floral sprays, ball
feet, chip
9,5cm wide
R600 - R900

262

A Collection of Nine Anri and
Oberammergau Carved Wood
Religious Figurines, 20th
Century
some with stamped markers mark and
paper label; and Three Further Wood
Carvings, 20th Century, including
a seated dog, one with stamped
factory mark
the tallest 12,5cm high (12)
R3 000 - R4 000

263

A Cased Dennert & Pape Mannheim
Slide Rule, 1901-1920
DRP no 126499; A Cased P Roch of
Rolle Suisse Vernier Caliper,
patent no 13429; and A Engineer
Lensatic Compass
the largest 29,5cm long (3)
R800 - R1 000

264

A Mycro II Miniature Camera by
Sanwa Co. Ltd, 1950s
in original leather case; An Ihagee
Exa V1 Camera, 1951-1952, in
original leather case; A Zeiss Ikon
Cocarette Folding Bed Camera 514/2,
1926-30; A Pair of Ross Steplux
Binoculars, 1957-1959, in original
leather case; and A Pair of Wire
Framed Spectacles, in original case
(5)
R1 000 - R1 500

265

A Black Persian Karakul Lamb Coat
92cm in length
R800 - R1 000

266

A Brown Canadian Squirrel Coat
89cm in length
R700 - R900

267

A Royal Pastel Mink Jacket
59cm in length
R800 - R1 000

268

A Cerulean Natural Blue Mink Stole
87cm in length
R300 - R500

269

A Pair of Glass and Mesh Soda
Syphons, Mid 20th Century
each stamped Made in England
36cm high (2)
R400 - R600

270

Two Guzzini Clear Lucite Wares,
1970s
comprising: a bud vase and a
stationary organiser
the vase 15cm high (2)
R700 - R900

271

Michael Wilkinson (1965-): An
Acrylic Sculpture 'The Kiss'
signed, dated 1994 and editioned
300
55cm high
R45 000 - R55 000

272

A 'Must de Cartier' Maroon Leather
Bound Organiser the cover with
central embossed logo, paper
inserts, in original box
19cm high
R2 500 - R3 500

273

A Georg Jensen Polished Stainless
Steel Elephant Bottle Opener
designed by Jorgen Moller, 1987
impressed makers mark, in original
box
R400 - R600

274

A Pair of Large Brown-painted
Cement Garden Pots
each of bulbous form, paint losses
60cm diameter (2)
R1200 - R1500

NO LOTS 275 - 280

FURNITURE

281

A Pair of Cape Stinkwood Georgian-
Style Occasional Chairs,
20th Century
each curved back, drop in seat, with
front turned legs (2)
R800 - R1 200

282

A Stained Mahogany Server,
20th Century
top with rounded corners, above
three short drawers, on splayed
legs
74x151x49cm
R1 600 - R2 400

283

An Upholstered Two Seater Sofa,
Modern
barrel arms with loose cushions to
back and seat, on bun feet
194cm long
R1 000 - R1 500

284

A Stained Mahogany Server,
20th Century
top with rounded edges, above
two short drawers, splayed legs
connected by shelf
74x121x49cm
R1 400 - R1 800

285

An Edwardian Stained Pine Childs
Desk, Early 20th Century straight
top, with hinged side extension,
above a row of three short drawers
69x94x47cm
R800 - R1 200

286

An Italian Sorrento-Style Drinks
Trolley, 20th Century
inlaid-style top with hinged sides,
turned push handle, lower shelf
with bottle apatures, on two large
and two small wheels
75x78x46cm
R1 500 - R2 500

287

An Edwardian Oak Pedestal Desk,
Early 20th Century
straight top, single central drawer
with four short drawers each
side, panels to back and sides, on
straight base
77x127x80cm
R2 800 - R3 400

288

A Victorian Mahogany Bowfront
Corner Hanging Cabinet, 19th
Century
carved top above two carved and
glazed cupboard doors, interior
fitted with shelves
112x80x52cm
R2 500 - R4 500

289

A George IV Rosewood Fold Over Card
Table, 19th Century
hinged top, carved and panelled
frieze, on round carved column
terminating in quadriform legs,
carved lion paw feet with castors
72x92x45cm
R4 000 - R6 000

290

A Pair of Upholstered Armchairs,
Modern
each in blue and geige strip
upholstery, on bun feet (2)
R1 000 - R1 500

291

A Mahogany Sofa Table, 20th Century
straight top with hinged sides,
frieze with two short drawers,
uprights each side with central
turned stretcher
75x125x57cm
R1 500 - R2 500

292

An Edwardian Oak Wine Table, Early
20th Century
round top, turned column on tripod
legs
30x55cm
R400 - R600

293

A Late Victorian Oak Childs
Rocking Chair, 19th Century
bobbin and turned frame with
upholstered back and seat
R500 - R700

294

A Mahogany Corner Bowfront
Cabinet Display, 20th Century
carved and pierced top rail above
two glazed cupboard doors, carved
and pierced base on quadriform
cabriole legs connected by an "X"
stretcher
163x82x55cm
R2 800 - R3 400

295

A Mahogany Server, 20th Century
bowfront top above two drawers, on
tapered legs
76x121x50cm
R1 400 - R1 800

296

An Oak Drinks Trolley, Mid 20th
Century
top with removable tray, above two
tiers with turned supports, on
castors
82x78x44cm
R500 - R700

297

A Pair of Emboya Morris Chairs,
Mid 20th Century
each with adjustable backs, with
loose upholstered cushions to
backs and seats (2)
R1 000 - R1 500

298

A Continental Walnut Secretaire De
Abbatant, 19th Century
straight top, above single drawer,
hinged slope with fitted interior,
a pair of cupboard doors below, on
ebonised round carved front feet
146x100x43cm
R5 000 - R 7000

299

An Oak and Upholstered Low Chair,
Early 20th Century
scroll arms with upholstered
back and seat, with front carved
cabriole legs
R600 - R900

300

A Continental Walnut Polychromed
Figural Stand, Early 20th Century
curved top shelf supported by a
carved maiden with raised hands,
on tripod feet
106x38x34cm
R2 000 - R3 000

301

A French Birds Eye Maple and Inlaid
Bureau, 20th Century
inlaid top above hinged fall front,
interior fitted, above single
drawer, on cabriole legs, inlaid
throughout with foliate motifs
102x80x46cm
R4 000 - R6 000

302

A Pair of Upholstered Armchairs,
20th Century
each with sweeping arms, back and
seat upholstered in green fabric (2)
R2 500 - R4 500

303

A White Painted African Carved
Drum Table, Modern
round top, above pierced carved
body
47x58cm
R1 500 - R2 500

304

A White Painted African Carved
Drum Table, Modern
round top, above pierced carved
body
44x50cm
R1 200 - R1 800

305

An Oak Wine Barrel Converted
Occasional Table, Modern
round panel top, curved legs with
"X" stretcher
38x54cm
R600 - R900

306

A Pair of North African Wall
Sconces, Early 20th Century
each with carved top, round bobbin
turned body and hanging aperture
(2)
R800 - R1 200

307

An Occasional Folding Table, 20th
Century
brass top tray on later folding
stained mahogany frame
61x55cm
R500 - R700

308

A Set of Ten Walnut Queen Anne-
Style Dining Chairs, Early 20th
Century
two armchairs, each with open back
splat, drop in upholstered seats on
front carved cabriole legs (10)
R7 000 - R10 000

309

An Oval Mahogany Extending Dining
Table, 20th Century
frieze with gadrooning, on tapered
legs with single extension leaf and
covers
80x233x145cm extended
R5 000 - R7 000

310

A Kruger Haye Teak Fire Surround,
20th Century
stepped straight top, central
carved floral spray with stepped
carved frame
133x140x17cm
R1 500 - R2 500

311

A Victorian Ebonised and Inlaid
Bureau De Dame, 19th Century
central framed mirror, flanked
by two small cupboards above
hinged fall front slope, fitted
interior, ormolu mounts and inlay
throughout, on front cabriole legs
150x82x50cm
R10 000 - R12 000

312

An Edwardian Oak Chest of Drawers,
Early 20th Century

straight stepped top above two
short and three long drawers,
each with linen fold carving, on
straight base

102x103x50cm

R3 000 - R5 000

313

A French Walnut and Mahogany
Bowfront Armoire, 20th Century

curved top above two panelled
cupboard doors, two conforming
panelled cupboard doors below,
with side carved columns

210x130x45cm

R8 000 - R12 000

314

A Merry-Go-Round-Style Childs
Horse, Early 20th Century

carved and moulded body showing
traces of pigment, on later pole
with cast iron base

105x75x31cm

R1 000 - R1 500

315

A Victorian Mahogany Metamorphic
Buffet, 19th Century

straight stepped top, plain frieze,
on carved metamorphic uprights,
connected by turned stretcher on
carved scroll feet, on castors

94x159x64cm

R18 000 - R24 000

316

A Victorian Mahogany Wardrobe,
19th Century

stepped straight top, above two
long panelled cupboard doors,
above single long drawer, straight
base, on bun feet

222x135x67cm

R5 000 - R7 000

317

A Victorian Mahogany and Marble
Hallstand, 19th Century

scroll and pierced frame, central
oval mirror above curved marble
top, single short drawer, on front
cabriole legs with connecting
shelf

195x117x50cm

R4 000 - R6 000

318

A George IV Rosewood Sofa Table,
19th Century

straight top, hinged sides with
rounded corners, carved bulbus
uprights each side, connected by
turned stretcher, with carved lion
paw feet

72x120x65cm [open]

R4 500 - R6 500

319

A Continental Mahogany Double Day
Bed, Early 20th Century

headboard with curved top, finials
on octagonal carved side columns,
with conforming foot end

144cm wide

R2 200 - R2 800

320

A Buttoned Back Upholstered Ottoman, 20th Century on carved bulbous legs, with castors

50x124x60cm

R3 000 - R5 000

321

A Designer Two Seater Upholstered Sofa, Modern barrel back and arms upholstered in dupion silk, with loose cushions 175cm long

R3 200 - R4 200

322

A Designer Two Seater Upholstered Sofa, Modern barrel back and arms upholstered in dupion silk, with loose cushions [en suite to previous lot] 175cm long

R3 200 - R4 200

323

A Designer Single Upholstered Armchair, Modern fully upholstered with loose cushions

R1 200 - R1 800

324

A Mahogany Entertainment Unit, Modern straight stepped top above two meshed cupboard doors, above two pairs of conforming cupboard doors, on castors

187x110x53cm

R1 500 - R2 500

325

A Deal Artist Easel, 20th Century adjustable centre with shelf
R1 000 - R1 500

326

A Set of Four Oak and Ebonised Dining Chairs, 20th Century each with stork form liar backrest, stuff over seat, on front curved legs (4)

R2 800 - R3 400

327

An Edwardian Oak Three Tier Folding Cake Stand, Early 20th Century curved top, hinged round shelves, on splayed legs
95cm high

R600 - R900

328

A George IV Rosewood Fold Over Card Table, 19th Century hinged top above bulbous carved column on quadriform legs with scroll carved feet

75x103x52cm

R4 000 - R6 000

329

A Pair of Continental Walnut and Upholstered Armchairs, 19th Century each with carved frame, upholstered back and seat, arms terminating in carved griffin form masks and legs with carved griffin form feet (2)

R8 000 - R12 000

330

An Edwardian Oak Pedestal Desk,
Early 20th Century
straight top above central drawer,
flanked by short drawer, above
pedestal cupboard doors each side
74x140x82cm
R3 500 - R5 500

331

A Set of Six Victorian Mahogany
Balloon Back Dining Chairs
curved open back, stuff over seat,
with front turned legs (6)
R5 000 - R7 000

332

A French Provincial Oak Armoire,
19th Century
straight stepped top above two long
panelled cupboard doors, wavy base
with straight carved and fluted
legs
200x164x65cm
R6 000 - R9 000

333

A Victorian Walnut and Inlaid Loo
Table, 19th Century
oval top with quarter veurer,
inlaid with scrollwork and
stringing, on four carved column
supports, with four carved splayed
legs, on castors
71x106x60cm
R4 000 - R6 000

334

An Edwardian Ebonised Low Chair,
Early 20th Century
carved top rail and backsplat, stuff
over seat, on front turned legs
R400 - R600

335

A Set of Four Early Victorian
Mahogany Dining Chairs, 19th
Century
curved top rail, back splat with
carved flower motif, stuff over
seat, on front carved and turned
legs (4)
R2 500 - R3 500

336

A French Oak Provincial Wardrobe,
Late 18th Century
straight stepped top above two
panelled cupboard doors and two
conforming drawers, wavy base, on
straight legs
185x145x55cm
R5 000 - R8 000

337

A Victorian Mahogany Loo Table,
19th Century
oval top inlaid with box floral
motifs and stringing, on four
carved columns, terminating in
four carved legs, on castors
72x117x85cm
R4 000 - R6 000

338

A Birds Eye Maple, Ormolu and
Marble Sideboard, Late 19th
Century
mirrored back, marble top above two
short drawers and two conforming
drawers, with ormolu mounts
120x123x46cm
R4 500 - R6 500

339

A Pair Of Georgian-Style Oak Occasional Chairs, 20th Century each with curved and carved backs, stuff over seat with front carved cabriole legs connected by stretchers (2)

R1 200 - R1 800

340

A French Oak Armoire, 19th Century stepped top, plain frieze above two carved panelled cupboard doors, on wavy base

227x140x64cm

R9 000 - R12 000

341

A Set of Four Georgian- Style Oak Dining Chairs, 20th Century each with carved and curved backrail and drop in seats, on front turned legs (4)

R2 500 - R4 500

342

A French Walnut Occasional Chair, 19th Century curved top carved and pierced backsplat depicting musical instruments and swags, stuff over seat, on tapered legs

R500 - R700

343

A Cape Pine Cupboard, Late 19th Century straight stepped top above two panelled cupboard doors, on straight base

195x130x53cm

R4 000 - R6 000

344

A Thonet-Style Bentwood Rocking Chair, Early 20th Century wickered back and seat, curved arms and frame, set upon rockers

R900 - R1 200

345

An Oak and Wicker Armchair, Early 20th Century wavy backrail, wickered back, curved arms, upholstered seat on front carved cabriole legs

R600 - R900

346

An Emboya Cocktail Cabinet, Early 20th Century straight top above panelled doors, fitted interior, above three linen fold drawers, wavy base on ball and claw feet, fitted with Oriental inspired brass mounts

126x76x46cm

R3 000 - R5 000

347

An American Oak Rocking Chair, Early 20th Century curved backrail, turned spindle frame, shaped seat, on rockers

R700 - R1 000

348

A Set of Three Victorian Mahogany Dining Chairs, Late 19th Century curved backrail with spindles, stuff over back and seat, on front turned legs (3)

R1 000 - R1 500

349

A White Laminated Retractable Shoe Cupboard, Modern

rectangular form hinged door, interior fitted with pigeon holes one side and rails the other, on castors

150x82x51cm

R2 000 - R3 000

350

A Pair of Vintage Chrome and Vinyl Office Chairs, 1970's

each with black vinyl back, arms and seat, chromed aluminium frame, on swivel base

R3 000 - R5 000

351

A Chrome and Glass Coffee Table, 1970's

square glass, inset into a chromed squared frame

41x82x82cm

R600 - R900

352

A Near Pair of Brass and Glass Occasional Tables, 1970's

each with square glass inset into a brass frame (2)

41x38x38cm

R600 - R900

353

A Four Seater Swiss Made Outdoor Patio Table and Four Chairs, 20th Century

round fibreglass and plastic table with four folding plastic chairs, marked "made in Switzerland", together with a lounge (4)

R1 500 - R2 500

354

A Vintage Bamboo and Wicker Rocking Chair, 20th Century

bamboo frame with wicker covering over, on rockers

R400 - R600

355

A Pair of Scandinavian Designed Beechwood Side Chairs, Mid 20th Century

curved frame with stuff over back and seat (2)

R800 - R1 200

356

A Danish Rosewood Entertainment Unit, Mid 20th Century

in two parts, straight top with modular open shelves above two drawers and two conforming cupboard doors

185x135x50cm

R5 000 - R7 000

357

A Pair of Danish Rosewood Open Bookcases, Mid 20th Century

each with straight top, adjustable shelves, above two panelled cupboard doors (2)

178x123x42cm

R6 000 - R9 000

358

A Custom Made Rosewood and Brass Dining Table, 1970's

rosewood top with brass frame and legs

R5 000 - R7 000

359

A Three Seater Art Deco Sofa, Early
20th Century

walnut barrel arms, covered in
brown hide, with loose cushions
212cm long

R12 000 - R18 000

360

A Mahogany Stained Art Deco-Style
Console Table, 20th Century

straight top above single short
drawer, elongated curved upright
supports, on stylised base

95x139x40cm

R2 000 - R3 000

361

A Multiwood Art Deco-Style Kidney
Shape Desk, 20th Century

shaped top above two cupboard
doors each side, on conforming
uprights

R3 200 - R5 200

362

An Upholstered Wingback Armchair,
Modern

with loose cushion

R700 - R900

363

A Flemish Oak Dresser, 19th Century
carved arched top, open carved

shelves with griffin form uprights,
three carved drawers and three
conforming cupboard doors below,
straight base, on lion paw feet

265x187x59cm

R16 000 - R24 000

364

A Victorian Mahogany Centre Table,
19th Century

round top, moulded edge, plain
frieze on central carved bulbous
column, with carved tripod legs,
terminating in carved scroll feet
71x120cm

R3 000 - R5 000

365

A Victorian Oak Washstand, Late
19th Century

tiled splashback, above marble top,
single cupboard door, on tapered
legs

R1 200 - R1 800

366

A Teak Daybed, 20th Century

panelled curved seat, on curved
outswept legs

163cm long

R1 800 - R2 400

367

A Cape Yellowwood and Stinkwood
Kitchen Table, Early 20th Century

panelled top, plain frieze with two
short drawers on turned tapered
legs

78x120x84cm

R3 000 - R5 000

368

A Cape Yellowwood Kist, 19th
Century

hinged top, interior fitted with
candle box, on straight stepped
base

44x79x48cm

R1 600 - R2 400

369

A Cape Stinkwood Riempie Bench,
Early 20th Century
gabled top rail, open spindle back,
curved scroll arms, on front turned
legs
185cm long
R4 000 - R6 000

370

An Edwardian Ebonised Childs Desk,
Early 20th Century
straight top above three short
drawers to side, on tapered legs
72x101x60cm
R400 - R600

371

An Edwardian Ebonised Open
Bookshelf, Early 20th Century
straight top, open fixed shelves on
straight base
172x152x25cm
R1 000 - R1 500

372

A Yewwood and Leather Topped Desk,
20th Century
straight top with leather inset,
above central drawer and single
drawer each side, on tapered legs
75x124x65cm
R2 500 - R4 500

373

A Stained Mahogany and Upholstered
Stool, 20th Century
drop in seat on fluted legs
50x55x40cm
R400 - R600

374

A Yewwood Drinks Cabinet, 20th
Century
straight top above hinged cupboard
door and two short cupboard doors,
on bracket feet
111x120x60cm
R2 500 - R4 500

375

An Art Deco Walnut Display, Early
20th Century
in two parts, television shaped top
display with sliding glass doors,
above conforming cupboard with
doors
164x100x62cm
R6 000 - R9 000

376

A French Mahogany Empire-Style
Display, Early 20th Century
breakfront top above two glazed
cupboard doors, flanked by half
columns, on straight base
169x122x48cm
R6 000 - R9 000

377

A French Walnut, Inlaid and Ormolu
Commode, 20th Century
shaped marble top, above four
bowfront drawers, on front
cabriole legs with ormolu mounts
91x93x50cm
R5 000 - R7 000

378

A Pair of French Kingswood Lamp
Tables, 20th Century
each with inlaid serpentine top,
wavy frieze, on cabriole legs, with
ormolu mounts, hardware and caps
74x55x55cm (2)
R4 000 - R6 000

379

A French Kingswood and Inlaid
Vitrine, 20th Century
marble top above single bowfront
drawer and conforming cupboard
door, inlay throughout with ormolu
mounts and stringing
96x107x47cm
R4 500 - R6 500

380

A French Kingswood and Ormolu
Coffee Table, 20th Century
comprising a modular middle
section and interlocking round
table each side, ormolu edging, on
cabriole legs
49x170x59cm
R2 200 - R2 800

381

A Pair of Bentwood Occasional
Chairs, Early 20th Century
hooped back, wooden curved seats
on straight legs (2)
R600 - R900

382

A Flemish Ebonised Oak Armchair,
Early 20th Century
scroll and pierced top rail, central
upholstered back splat, curved
arms, stuff over seat, on front
carved legs
R600 - R900

383

A Flemish Ebonised Oak High Chair,
Early 20th Century
scroll and carved top rail, central
upholstered back splat, stuff over
seat on front carved legs
R500 - R700

384

An Oak Bowfront Pedestal, Early
20th Century
low back splash, stepped top above
cupboard door, on splayed legs
84x49x30cm
R600 - R900

385

A Flemish Oak Court Cupboard, Early
20th Century
straight top above central
cupboard door, flanked by cupboard
doors at an angle, above two
conforming cupboard doors, with
mouldings
150x124x50cm
R1 500 - R2 500

386

A Flemish Oak Extending Work
Table, Early 20th Century
panelled top with two pull out
leaves, carved wavy frieze, two
bulbous carved uprights each side,
connected by stretcher
77x166x91cm
R1 000 - R1 500

387

A Cape Stinkwood Riempié Bench,
Early 20th Century
straight top and back splats, curved
arms, on front carved legs
143cm long
R4 000 - R6 000

388

A Stinkwood Coffee Table, Early
20th Century,
rectangular top with linen fold
frieze on cabriole legs with
ball and claw feet, together with
another small example
40x105x50cm (2)
R500 - R700

389

An Oak Corner Cabinet,
Early 20th Century
three curved open shelves with
wavy side supports above two
panelled cupboard doors
157x106x60cm
R2 000 - R3 000

390

A Victorian Extending Mahogany
Dining Table, 19th Century
straight edged top, with carved
fluted legs, on castors, single
extension leaf
75x145x105cm extended
R6 000 - R9 000

391

A Victorian Mahogany Easel,
19th Century
in the Roccoco-style, pierced and
carved with scrolls and swags,
adjustable shelf on scrolls form
legs, with hinged back support
170cm high
R3 500 - R5 000

NO LOTS 392 - 400

CLOCKS

401

A French Mahogany and Ormolu
Portico Clock, 19th Century
movement signed Hamburg American
Clock Company, gabled top with
ormolu decoration, acorn finials,
enamelled dial with Arabic
numerals, supported by four
columns, sun form pendulum on
stepped base, on bun feet
26x14x8cm
R6 000 - R8 000

402

A French Gilt Metal Figural Mantel
Clock, 19th Century
case portraying fashionable
French lady with fruit and flowers,
Roccoco-style base with scrolls
and swirls, circular enamel face
with Roman numerals, eight day
movement
44x32x12cm
R12 000 - R18 000

403

A French Figural Mantel Clock, 19th
Century
depicing a bronze putti playing
the tamborine, cylinder dial and
movement with enamel face and
Roman numerals, ormolu mounts on
pink marble base
23x15x12cm
R7 000 - R10 000

404

A French Champleve and Gilt Metal Mantel Clock, 19th Century round porcelain case with gilt metal urn and mask adornments on Rococo-style base, enamelled dial with Arab numerals and central gilt metal medallion
38x26x14cm
R5 000 - R7 000

405

A French Gilt Metal and Marble Mantel Clock, 19th Century marble top and base, heavy bevelled glass on all four sides, porcelain dial with Arabic numerals, mercury pendulum, striking movement
28x18x15cm
R3 000 - R5 000

406

A Dutch Oak Cased Wall Mounted Zaandam Clock, 19th Century the painted dial with Roman numerals, hood with carved figures, hinged door flanked by columns
93cm high
R4 000 - R6 000

407

A Cape Yellowwood and Stinkwood Miniature Grandfather Clock, 20th Century gable top, grandfather clock formed body, modern brass Roman numerals, with modern movement
65x21x11cm
R300 - R500

NO LOTS 408 - 410

METALWARE

411

A Copper Milk Pale, 19th Century scoop form lid with handle, round body with carrying handles
R300 - R500

412

An Oval Brass Mirror, Mid 20th Century bevelled glass, shell form top with candle holders to sides supported by scroll arms
R2 000 - R3 000

413

A Large Pair of Silver Plated Six Branch Floor Standing Candelabrum, Early 20th Century each with acorn finial above six arms terminating in candle holders, with crystal lustres, central column on scroll form base with tripod legs (2)
R6 000 - R9 000

414

A Persian Brass Wall Tray, Mid 20th Century central indented section decorated with floral and swag motifs in copper, silver and ebonised metals, with written surround
R300 - R500

415

A Copper Planter, 20th Century hand beaten with decorative bands, with rivets
R600 - R900

416

A Persian Copper Kettle, Early 20th Century

lid with double turned finial,
outswept handle and spout

R700 - R1 000

417

A Near Pair of French Copper

Gallons, Early 20th Century
each with turned rim, bulbous body
and carrying handle (2)

R1 000 - R1 500

418

A Set of Three Copper Pots

each round bowl with elongated
handle connected with rivets (3)

R1 800 - R2 400

419

A Near Pair of French Copper Pans,
Late 19th Century

each round bowl with elongated
handle connected by rivets (2)

R700 - R1 000

420

A Flemish Copper Chestnut Roaster,
Early 20th Century

tear drop shaped roaster with
pierced holes, later handle

R200 - R300

421

A Copper Bowl, Early 20th Century

hand beaten with hanging ring

R300 - R400

422

A Cape Copper Tart Pan, 19th
Century

round body, hooped carrying
handles on three riveted steel
forged legs

R1 000 - R1 500

423

A French Copper Tart Pan, 19th
Century

round body, hooped carrying
handles on three riveted steel
forged legs

R700 - R1 000

424

A Brass and Glass Gas Lamp, Early
20th Century

round reservoir stamped "Matador,
registered" with ignitor and
adjustor, on round base, with glass
shade

R700 - R1 000

425

A Cape Brass Jam Pot, Late 19th
Century

round bowl with turned edge, brass
carrying handles with rivets

R700 - R1 000

426

A Cape Brass Cooking Pot, Early
20th Century

round bowl with forged iron
carrying handle

R500 - R700

427

A Brass Six Branch Candelabrum,
20th Century
each candle holder with drip pan,
scroll arms on turned column and
round base
R400 - R600

428

A Short Pair of 18th Century-Style
Brass Candlesticks, 20th Century
each cast with candle holders on
turned column with squared bases
(2)
R200 - R300

429

A Figural Brass Lamp Base, 20th
Century
cast in the form of a young boy
holding a scroll on Baroque-style
base
R200 - R300

430

A Brass and Iron Table Top Potters
Wheel, 20th Century
round brass top with incised rings,
on swivel ebonised tripod base
R800 - R1 200

431

A Massive Persian Brass Urn, 20th
Century
round open top, tapered body,
incised decoration on round base
R1 400 - R1 800

432

A Cape Copper Pan, Late 19th
Century
round bowl with turned edge, iron
carrying handles with rivets
R700 - R700

433

A Copper Arts and Crafts Embossed
Jug, Early 20th Century
wavy rim, bulbous body with bands
of floral decoration, forged
handle
R500 - R700

434

A Cape Copper Pan, Funnel, Ladle
and English Canister, Late 19th
Century
canister engraved "Shirleys Hecla,
none other genuine" (4)
R600 - R900

435

Two Brass and Copper Fire Engine
Hose Nozzles, 19th Century
together with a brass brush (3)
R700 - R100

436

A Cape Brass Chamber Stick, Late
19th Century
round candle holder, open column,
round pan with carrying handle
R200 - R300

437

A Continental Brass and Copper
Trumpet, Late 19th Century
copper body with brass mouthpiece
R250 - R350

438

An English Three Gallon Copper
Jug, 19th Century
stamped with crown and "3 gallon"
R800 - R1 200

439

Three Copper Utensils
various shapes and sizes
the largest 43cm long
R500 - R700 (3)

NO LOT 440

SILVER

441

A Pair of Electroplate Toast Racks,
20th Century
together with two tongs, two
nutcrackers, six knife rests and a
cased set of six cake forks (18)
R200 - R300

442

A Pair of Electroplate Dwarf
Candlesticks, 20th Century
together with a snuffer (3)
R150 - R250

443

A Electroplate Wine Coaster, Mid
20th Century
together with a vegetable dish and
cover, butter dish and cover and
three trays (6)
R250 - R350

444

A Georgian Electroplate Tea Caddy,
Early 19th Century
together with a jug and ladle (3)
R200 - R300

445

A Electroplate Ronson Table
Lighter, Mid 20th Century
together with a ladle and shoe horn
(3)
R200 - R300

446

A Set of Six Electroplate Dolphin
Form Name Place Holders, 20th
Century (6)
R300 - R500

447

A Collection of Ten Various
Electroplate, Pewter and Enamel
Decanter Lables, 20th Century
including whiskey, sherry, vodka,
brandy and cane (10)
R300 - R500

448

An Assembled Set of Silver
Teaspoons, Various Makers
and Dates, London, Sheffield,
Birmingham, 1896-1965
comprising: 17 teaspoons, various
sizes
275g in total (17)
R1 200 - R1 500

449

A Miscellaneous Collection of
Silver Items, Various Makers and
Dates, Birmingham and Chester,
1909-1947
comprising: a bracelet, a compact, a
frame, a cigarette case and a chain-
mail purse
103g weighable silver (5)
R1 200 - R1 500

450

A Miscellaneous Collection of
Silver Items, Various Makers and
Dates, Chester and Continental,
1911
comprising: a pair of porcelain and
silver-mounted cups, a bowl and a
miniature horse and carriage
227g in total (4)
R2 000 - R3 000

451

A Collection of Silver Napkin Rings, Various Makers and Dates, Birmingham and Sheffield, 1932-1961

various shapes and sizes

139g in total (6)

R800 - R1 000

452

A Collection of Silver Cups, Various Makers and Dates, Russian, Birmingham and Continental

various shapes and sizes

119g in total, the largest 13cm high (3)

R1 200 - R1 500

453

An Italian Electroplate Entrée Dish

the circular body with a turned-wooden handle, burner and stand 23cm high

R700 - R900

454

An Assembled Set Of Electroplate Cutlery

comprising: 12 table knives, 12 table forks, a tablespoon, 12 dessert knives, 12 dessert forks, 12 dessert spoons, 12 soup spoons, 12 fish knives, 12 fish forks, 12 cake knives, 12 cake forks, 12 fruit spoons, 9 teaspoons, 2 cake lifters, a carving knife and fork (147)

R800 - R1 000

455

An Electroplate Four-Piece Tea And Coffee Set

comprising: a teapot, a coffee pot, a milk jug and a two-handled sugar basin with cover, each oval body with gadrooned and beaded rim, applied with a turned-wooden harp-shaped handle, the hinged cover with gadrooning and a turned-wooden disc finial, the coffee pot 22cm high; and A Later Electroplate Sugar Spoon (5)

R600 - R800

456

A Pair of Italian Silver Candelabra, .800 Standard

each fluted stem with a pair of scroll handles, raised on a square base, loaded (2)

R4 000 - R6 000

457

A Pair of Electroplate Entrée Dishes

each oval body with swags and flowerheads, beaded rim, centred with a scroll ring handle, 23cm wide; and An Electroplate Tray, the circular body chased with scrolling foliage, beaded rim, raised on four ball-and-claw feet (3)

R400 - R600

458

NO LOT

459

A Pair of Silver Shell Butter Dishes (2)

R1 000 - R1 500

460

Two Indian Silver Bowls
ornately decorated with
mythological scenes; A Continental
Silver Tea Strainer; And A Brass And
Copper Wine Goblet (4)
R2 000 - R3 000

461

Four Indian Silver Bowls
ornately decorated with
Mythological Scenes; and A White
Metal Tea Cup (5)
R2 000 - R3 000

462

A Three Piece Art Deco Silver Tea
Service
comprising: a teapot, milk jug
and sugar basin with engraved
initials B.M (3)
R6 000 - R9 000

463

A Pair of Silver Art Deco Ashtrays
(2)
R500 - R700

464

A Pair of Hallmarked Silver
Dwarfed Candlesticks (2)
R200 - R400

465

A Pair of Continental Silver
Candlesticks
each circular foot with
gadrooning, knopped stem, urn-
shaped sconce, distress loaded
21cm high (2)
R1 500 - R2 500

466

A Pink Guilloche and Silver-
Mounted Dressing Table Set, Adie
Brothers Ltd, Birmingham, 1928
comprising: a hand mirror and four
others, distress (5)
R1 800 - R2 400

NO LOTS 467 - 470

JEWELLERY AND WATCHES

471

A Vintage Coral Necklace,
Mid 20th Century
NOT SUITABLE FOR EXPORT
natural strands on string
R500 - R700

472

A Vintage Case of Costume
Jewellery, Mid 20th Century
to include two strings of faux
pearls, a ladies watch, brooches and
earings (qty)
R300 - R500

473

A Collection of Costume Jewellery
in a Red Leather Jewellery Box (qty)
R800 - R1 200

474

A Set of Three Necklaces
comprising: a garnet set silver
cross, a silver necklace, and two
silver meditation balls on a rope
necklace (3)
R800 - R1 200

475

A Pearl Necklace
graduated cultured pearls,
18ct white gold clasp set with 3
diamonds, weighing approximately
0.30ct
approximatley 530mm in length
R4 000 - R6 000

476

A Pearl Necklace
a single graduated string of
cultured pearls, 18ct gold diamond
and ruby set clasp
R4 000 - R6 000

477

An 18ct White Gold Cartier Design
Diamond Bracelet
set with 19 quality RBC diamonds,
weighing approximately 2.50ct
R30 000 - R35 000

478

An 18ct Diamond Double Eternity
Ring
set with 18 diamonds, weighing
approximately 1.60ct
R5 000 - R7 000

479

A Pair of 18ct Yellow Gold Diamond
and Star Sapphire Cluster Earrings
(2)
R4 000 - R6 000

480

An 18ct White Gold Diamond Cluster
Ring
centred with a certified, modified
oval 0,68ct fancy brown-yellow
diamond, surrounded by fine white
diamonds, weighing approximately
0.34ct
R20 000 - R30 000

481

A Pair of Omega Cufflinks
(2)
R200 - R400

482

An 18ct White Gold Diamond Cluster
Pendant
on a 18ct White Gold Chain
centred with a fancy cinnamon oval
diamond, weighing approximately
0.75ct, surrounded by fine white
diamonds, weighing 0.20ct in total
R10 000 - R12 000

WATCHES

483

A 14ct Rose Gold Diamond Set
Invicta Ladies Pocket Watch
R3 000 - R4 000

484

A 18ct Continental Pocket Watch
the porcelain dial marked 44412
with subsidiary second dial
the bezel 46mm diameter
R4 000 - R6 000

END OF SALE

NOTES:

CATALOGUE TERMS

AUCTION

any private treaty or auction sale at which a lot is offered for sale by the Company

AUCTIONEER

the representative of the Company conducting an auction

BIDDER

any person making, attempting or considering to make a bid or offer to buy a lot at an auction, or private treaty sale

BUYER

the bidder who makes the bid or offer for any lot that is finally accepted by the auctioneer (after determination by the auctioneer of any dispute that may exist in respect thereof) at a sale of that lot, and (where the Buyer is an agent acting for a principal), the Buyer and the Buyer's principal jointly and severally

BUYER'S PREMIUM

the premium payable by the Buyer of a lot to the Company on the sale of that lot, calculated on the hammer price of that lot at the relevant current rates

CATALOGUE

any advertisement, brochure, estimate, pricelist, condition report and other publication (in whatever medium, electronically or otherwise) published by the Company in respect of any auction

CIRCA

commonly used when the date of events is not known, such as publication dates or when the artist completed his/her work

COMMISSION BIDDER

any person who is not physically in the auction location at time of auction, who makes a bid or offer to

buy by placing their maximum bid prior to the auction

HAMMER PRICE

the bid or offer made by the Buyer for any lot that is finally accepted by the auctioneer (after determination by the auctioneer of any dispute that may exist in respect thereof) at a sale of that lot, together with VAT thereon (if any)

LOT

any item or items to be offered for sale by the Company at an auction or private treaty sale

PURCHASE PRICE

the hammer price of any lot at a sale thereof, plus the applicable Buyer's premium for that lot, plus all recoverable expenses for which the Buyer is liable in respect of that lot

RESERVE

the confidential minimum hammer price (if any) at which a lot may be sold at an auction as agreed between the Seller of that lot and the Company in writing

SALE

the sale of any lot at an auction, whether done by private treaty or auction sale, and "sell" and "sold" shall have corresponding meanings

SELLER

the person named as the Seller of any lot, being the person that offers the lot for the sale

TELEPHONE BIDDER

any person making, attempting or considering to make a bid or offer to buy a lot at an auction, who is not physically in the auction location at the time of the auction

VAT

value added tax levied in terms of the Value Added Tax Act, 1991

CONDITIONS OF BUSINESS

COMMISSIONS

Buyer's Commission: 15% (+ VAT) for lots selling for, or below, R10 000, and 12 % (+ VAT) for items selling above R10 000.

Seller's Commission: 15% (+ VAT)

INSURANCE

Omni shall be liable for insurance of consigned goods to the value of the low estimate

Buyers and Sellers will be responsible for transit related insurance.

TRANSPORTATION

Consignees shall be responsible for their own transport requirements.

All collections of purchases are to occur within three days after the sale. Non-payers will be charged a penalty fee. Non-collectors will be charged storage fees.

PAYMENT

The following methods of payment are accepted:

CREDIT/DEBIT CARD - Visa and Master Card only (excluding international buyers)

A 3% bank charge will be added onto the buyer's commission for all card payments

No cheques accepted

EFT - Omni (Pty) Ltd
First National Bank
Branch: Claremont, Cape Town
Branch Code: 200 109
Account Number:
6267 3572 246
SWIFT: FIRNZ AJJ

Foreign payments are calculated at Prime Rate, in South African Rands, at the time of payment. No credit card payments will be accepted from countries outside of South Africa.

Proof of Payments must be emailed to accounts@omni.co.za or presented upon collection of purchases.

International clients - VAT is non-refundable as this is levied on the auction service, not the product

A 3% internet surcharge will be added for items purchased online at thesaleroom.com or Invaluable.com

BIDDING

Bid forms are to be placed at least 24 hours prior to the auction.

A commission bid may be placed at the maximum amount you wish to bid for a lot.

Placing an absentee bid is a legally binding contract. Reneging will result in possible blacklisting.

GENERAL BUYERS TERMS AND CONDITIONS

All items are sold "As is".
Condition reports may be requested in writing from the specialist.

Opinions and condition reports are given to the best of our knowledge, however, we do recommend that you consult a professional restorer for more accurate reporting.

In the event of a proven forgery, returns must be made within 30 days of the sale date accompanied by a formal written report.

For ivory and endangered species artefacts, it is the buyer's responsibility to arrange the necessary cites, permits and documentation for export/import

GENERAL SELLERS TERMS AND CONDITIONS

Sellers will be paid 30 days from date of sale.

Withdrawal fees will be charged at the sum of the buyer and seller commission rate. Sellers may withdraw up to 48hrs prior to the auction and in put writing.

By entering into the seller's contract, the consignee acknowledges that they are the rightful owner of the property to be consigned

GENERAL CONDITIONS OF SALE

All buyers and sellers information is strictly confidential.

Omni will not be held liable for any errors printed in the catalogue.

Sale dates and cancellations of auctions is solely at the discretion of Omni and its employees.

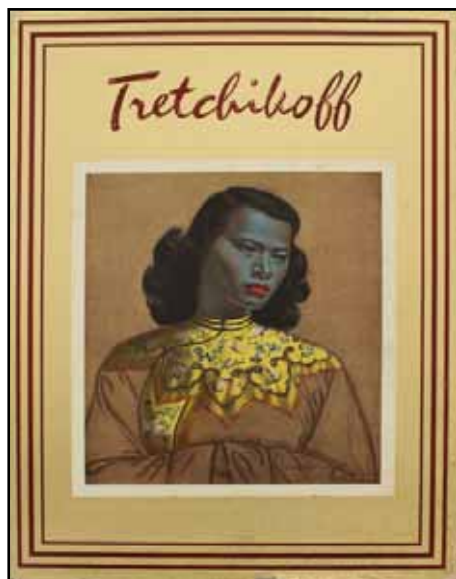
Items not collected within a month of the auction shall be re-auctioned in order to cover operational costs.

GENERAL TERMS OF BUSINESS

Omni will not be held liable for any personal injury or damage to property whilst on their premises. Right of admission reserved.

Imagery on the website is solely reserved for Omni operational use and may not be distributed or used for any other purposes.

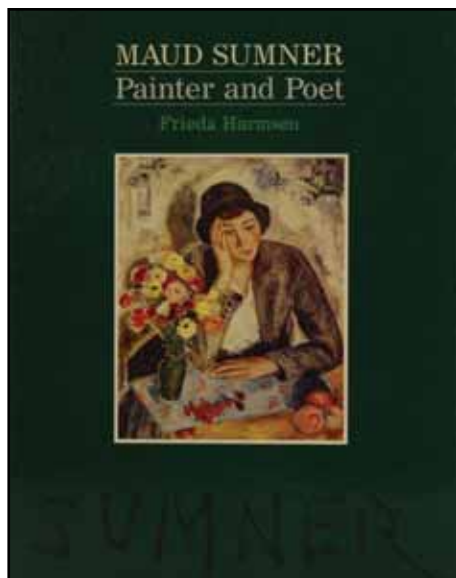
The official business address is 9 Hemlock Street, Newlands, 7700. Omni, however, reserves the right to hold auctions at alternate locations.



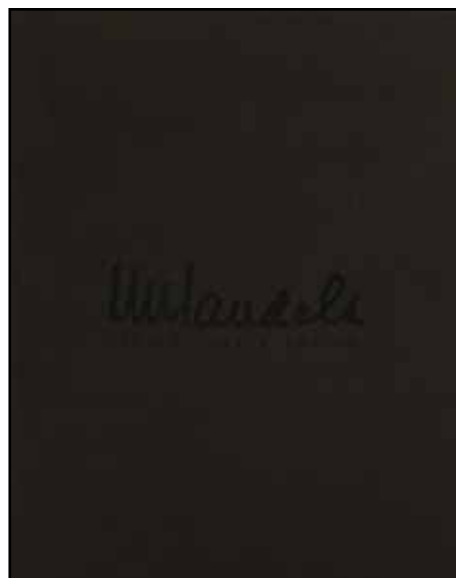
5



6



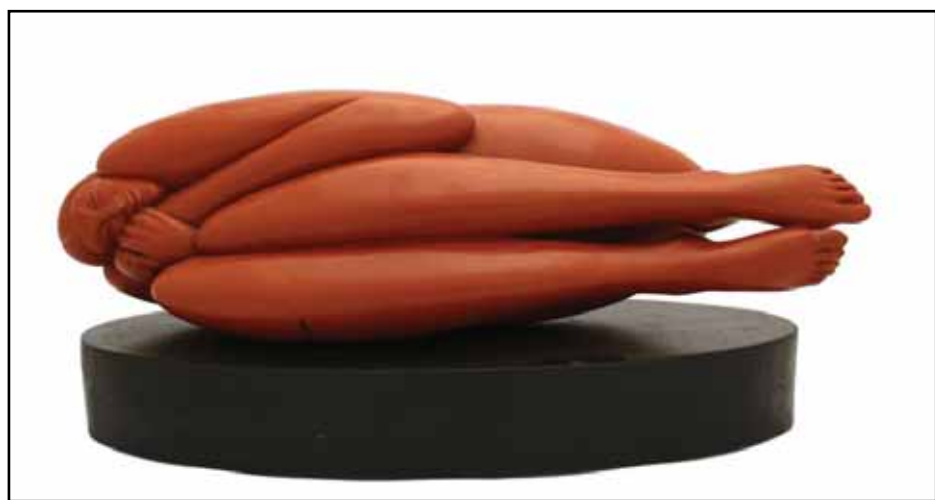
13



72



73



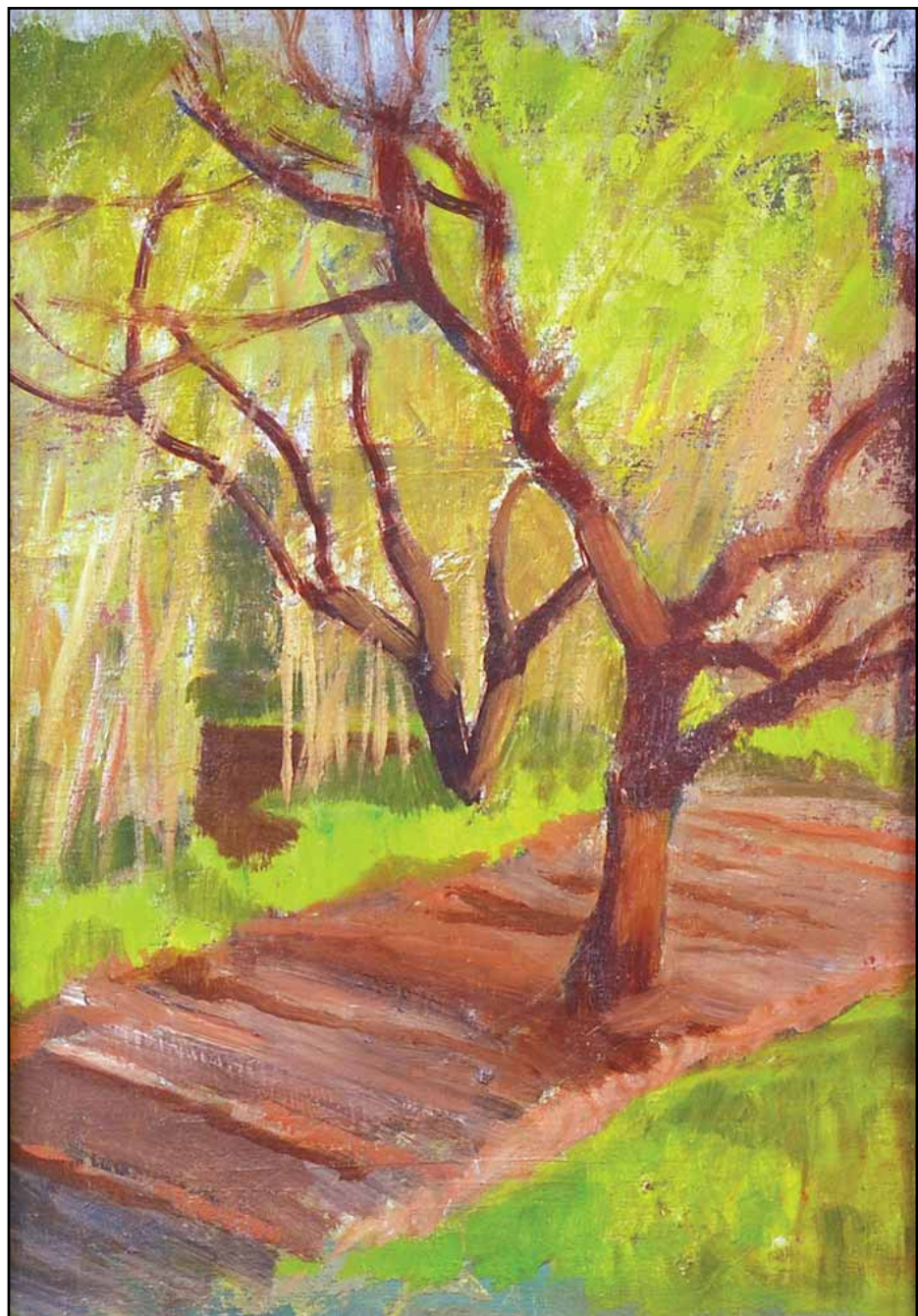
74



100



104





125



136



146



183



202



218



251



293



300



314



315



308



336



350



359



401



402



403



411



417



413



475



478



480



482